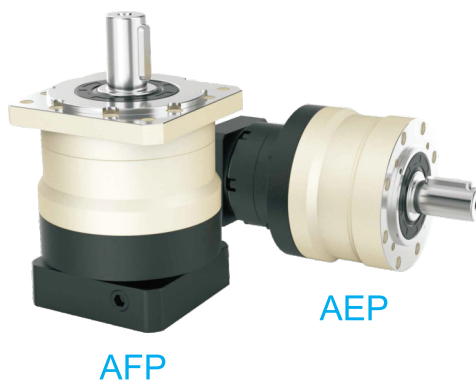
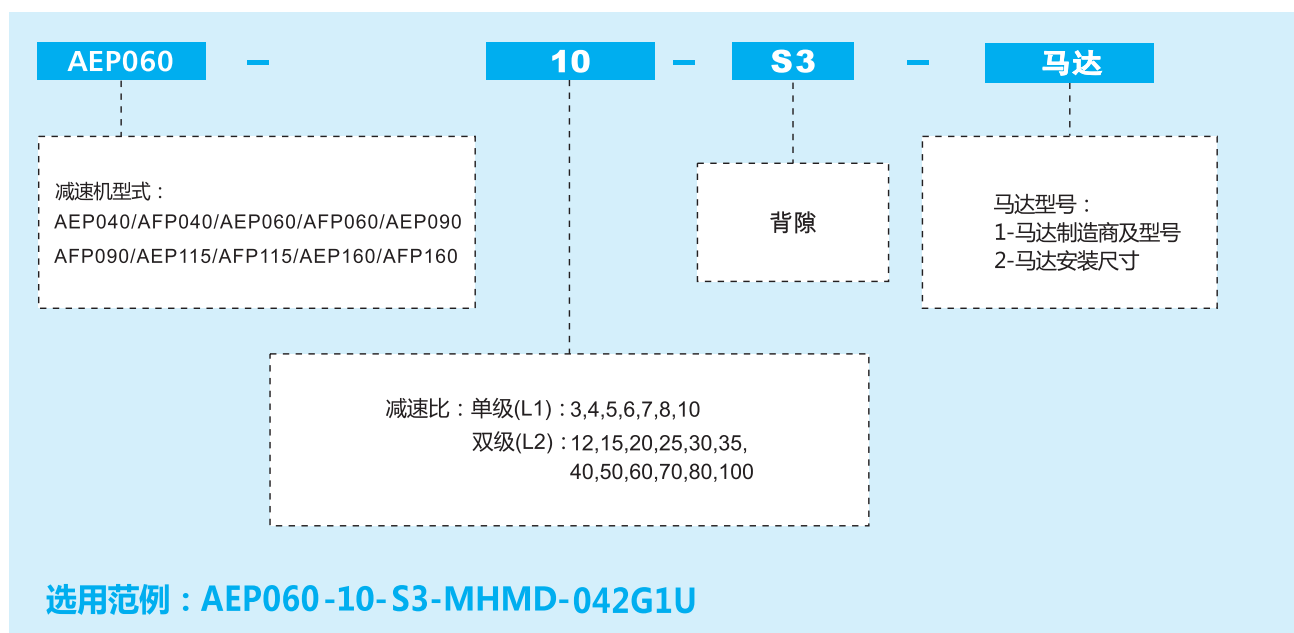




型号说明 / MODEL ILLUMINATE

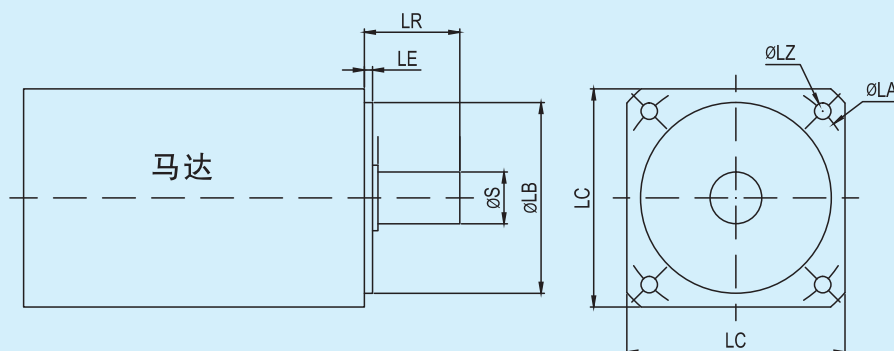


型号定义 / MODEL ILLUMINATE



型号定义② AEP060-10-S3-50*3/14*30/70/M4

LB*LE S*LR LA LZ



减速机性能资料 / GEAR BOX PERFORMANCE INFORMATION

规 格	级 数	减速比 ¹	AEP040 AFP040	AEP060 AFP060	AEP090 AFP090	AEP115 AFP115	AEP160 AFP160
额定输出力矩T _{2N}	1	3	20	55	130	208	342
		4	19	50	140	290	542
		5	22	60	160	330	650
		6	20	55	150	310	600
		7	19	50	140	300	550
		8	17	45	120	260	500
		10	14	40	100	230	450
	2	12	20	55	130	208	342
		15	20	55	130	208	342
		20	19	50	140	290	542
		25	22	60	160	330	650
		30	22	55	130	208	342
		35	22	60	160	330	650
		40	22	50	140	290	542
		50	22	60	160	330	650
		60	20	55	150	310	600
		70	19	50	140	300	550
		80	17	45	120	260	500
		100	14	40	100	230	450
最大输出力矩T _{2B}	Nm	1,2	3~100	3倍额定输出力矩			
额定输入转速n ₁	rpm	1,2	3~100	5,000	5,000	4,000	4,000
最大输入转速n _{1B}	rpm	1,2	3~100	10,000	10,000	8,000	8,000
背隙 S3	arcmin	1	3~10	≤8	≤8	≤8	≤8
		2	12~100	≤10	≤10	≤10	≤10
扭转刚性	Nm/arcmin	1,2	3~100	3	7	14	25
容许径向力F _{2rB} ²	N	1,2	3~100	780	1,530	3,250	6,700
容许轴向力F _{2a1B} ²	N	1,2	3~100	350	630	1,300	3,000
容许轴向力F _{2a2B} ²	N	1,2	3~100	390	765	1,625	3,350
使用寿命	hr	1,2	3~100	20,000*			
效率 η	%	1	3~10	≥97%			
		2	12~100	≥94%			
重量	kg	1	3~10	0.5	1.3	3.7	7.8
		2	12~100	0.8	1.9	4.1	9
使用温度	°C	1,2	3~100	-10°C~+90°C			
润滑		1,2	3~100	合成润滑油脂			
防护等级		1,2	3~100	IP65			
安装方向		1,2	3~100	任意方向			
噪音值 (n ₁ =3000rpm)	dB	1,2	3~100	≤56	≤58	≤60	≤63

减速机转动惯量

规 格	级 数	减速比 ¹	AEP040 AFP040	AEP060 AFP060	AEP090 AFP090	AEP115 AFP115	AEP160 AFP160
转动惯量J ₁	1	3	0.03	0.16	0.61	3.25	9.21
		4	0.03	0.14	0.48	2.74	7.54
		5	0.03	0.13	0.47	2.71	7.42
		6	0.03	0.13	0.45	2.65	7.25
		7	0.03	0.13	0.45	2.62	7.14
		8	0.03	0.13	0.44	2.58	7.07
		10	0.03	0.13	0.44	2.57	7.03
	2	12	0.03	0.03	0.13	0.47	2.71
		15	0.03	0.03	0.13	0.47	2.71
		20	0.03	0.03	0.13	0.47	2.71
		25	0.03	0.03	0.13	0.47	2.71
		30	0.03	0.03	0.13	0.47	2.71
		35	0.03	0.03	0.13	0.47	2.71
		40	0.03	0.03	0.13	0.47	2.71
		50	0.03	0.03	0.13	0.44	2.57
		60	0.03	0.03	0.13	0.44	2.57
		70	0.03	0.03	0.13	0.44	2.57
		80	0.03	0.03	0.13	0.44	2.57
		100	0.03	0.03	0.13	0.44	2.57

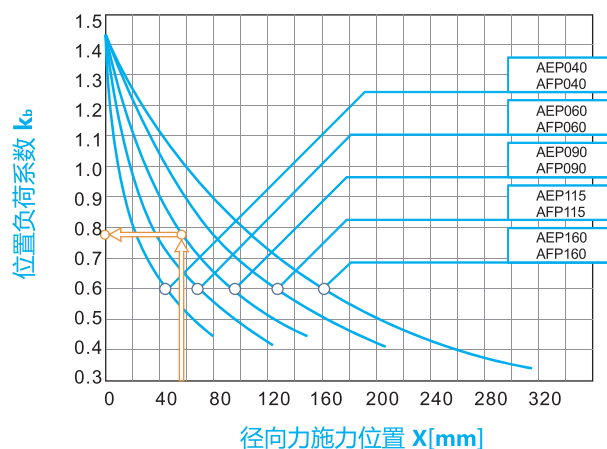
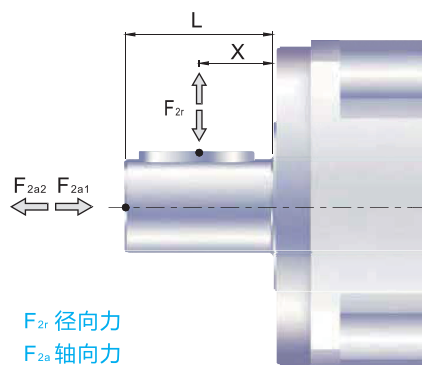
1.减速比 (i=N_{in}/N_{out})

* 连续运转降低使用寿命二分之一。

2.输出转数 100rpm 时，作用于输出轴中心位置。

减速机输出轴之容许径向力及轴向力

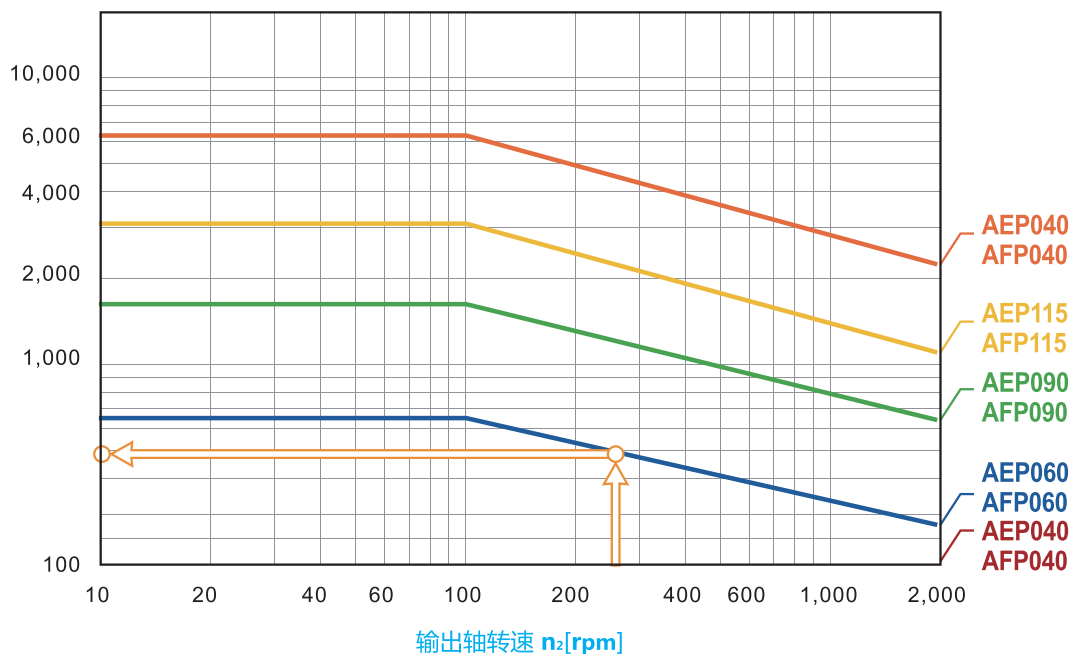
REDUCER OUTPUT SHAFT OF THE PERMISSIBLE RADIAL FORCE AND SHAFT AND FORCE



减速机输出轴所能承受之最大径向力及轴向力,端视内部支撑轴承之设计。

当径向力 F_{2r} 施力不在轴中心位置,越靠近减速机即 $X < 1/2 \times L$,所能承受之容许径向力变大;越远离减速机即 $X > 1/2 \times L$,所能承受之容许径向力变小。藉由上图,依减速机规格及径向施力位置 X ,可查出位置负荷系数 k_b 。

容许径向力 $F_{2rB}[N]$ 施力于轴中心位置



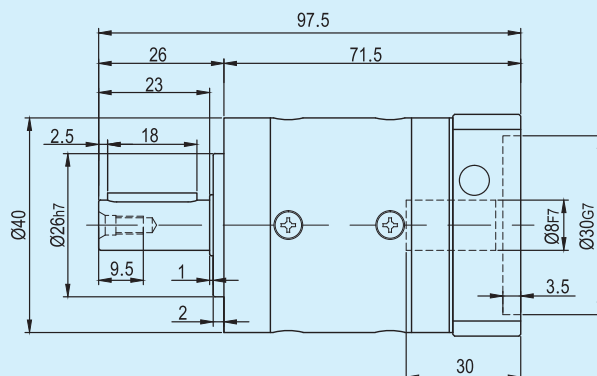
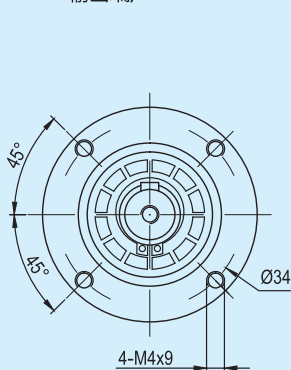
当径向力 F_{2r} 施力于轴中心位置,即 $X = 1/2 \times L$ 时,不同之减速机在不同输出转速运用下,使用寿命为20,000*小时,所能承受之容许径向力,请参照上图。

* 连续运转(S1)下之使用寿命降低50%。

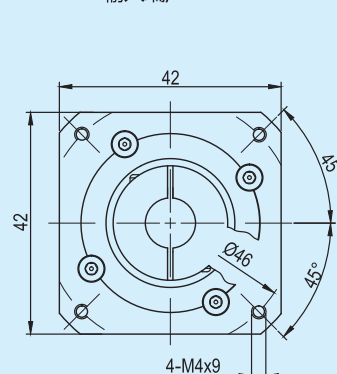
外形尺寸图表 / OUTLINE DIMENSION SHEET

AEP040-L1

输出端 / OUTPUT

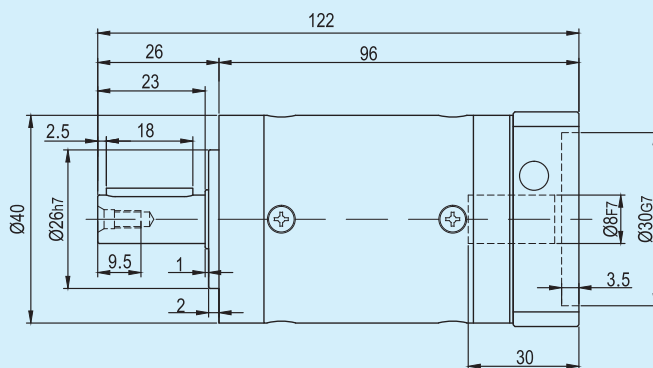
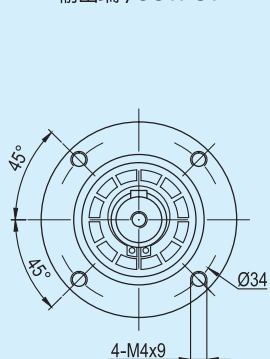


输入端 / INPUT

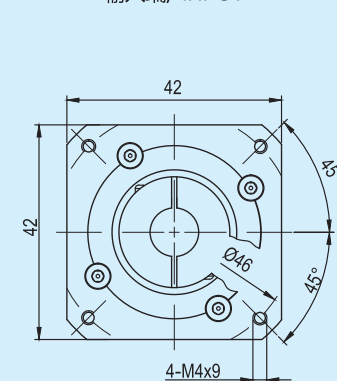


AEP040-L2

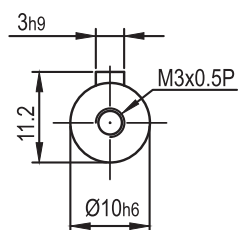
输出端 / OUTPUT



输入端 / INPUT



输出轴径 / Output Diameter

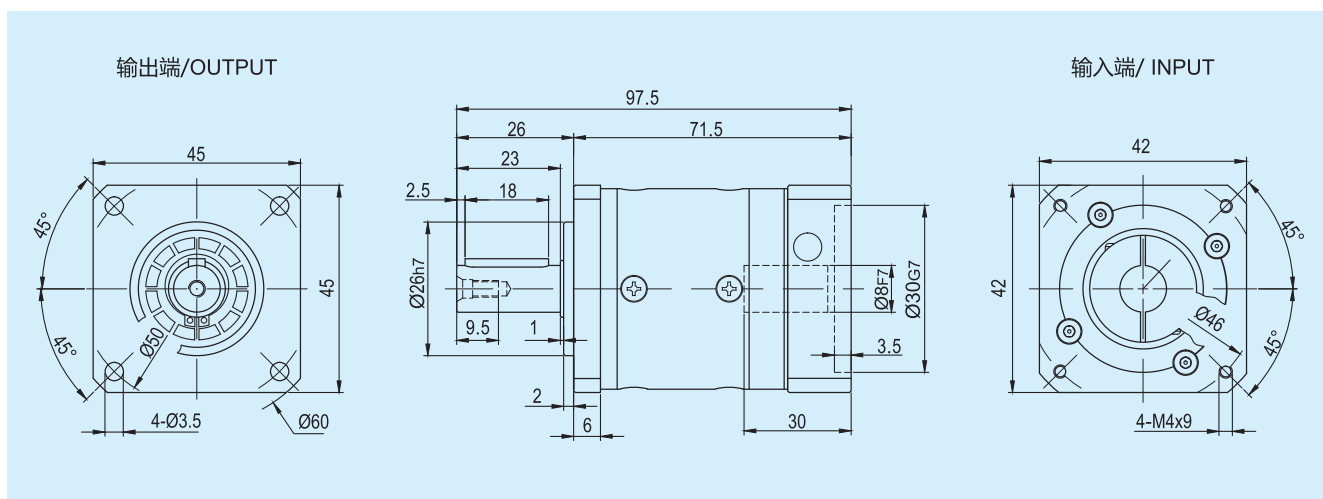


*输入马达连接板之尺寸,可根据客户要求单独定做。

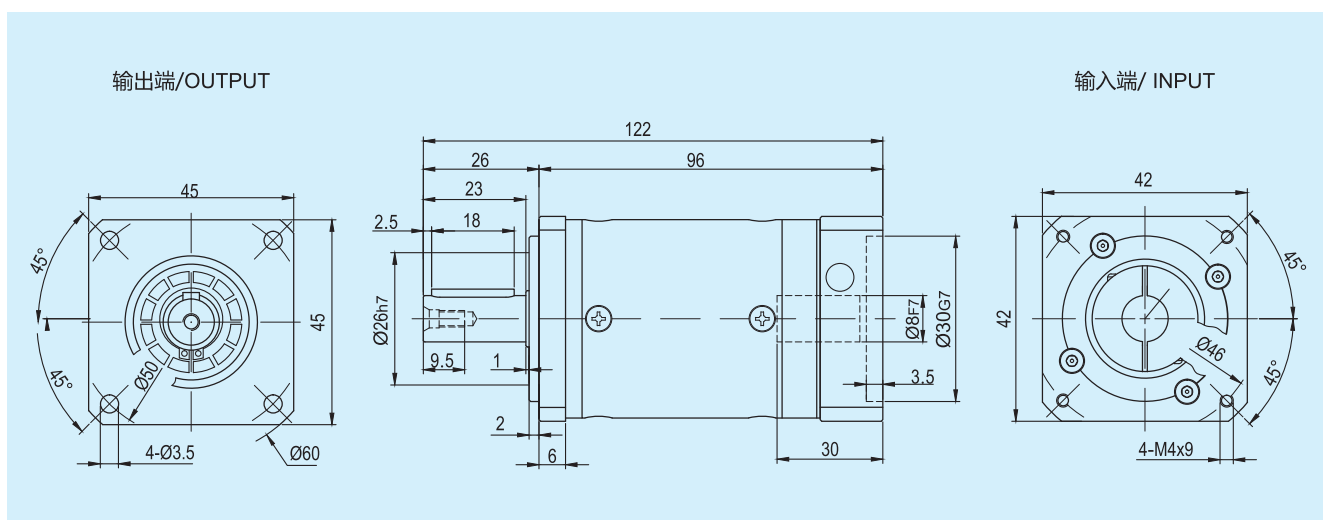
*The input motor specific dimensions could be customised.

外形尺寸图表 / OUTLINE DIMENSION SHEET

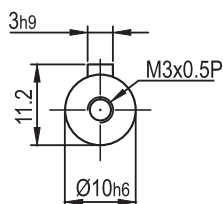
AFP040-L1



AFP040-L2



输出轴径/Output Diameter

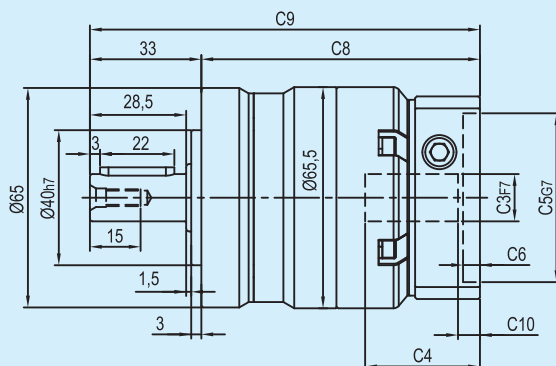
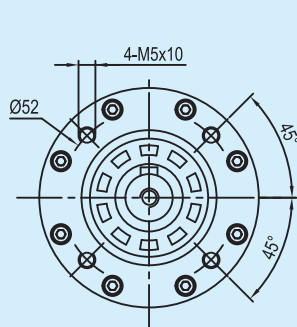


*输入马达连接板之尺寸,可根据客户要求单独定做。
*The input motor specific dimensions could be cumised.

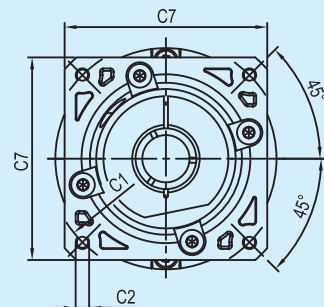
外形尺寸图表 / OUTLINE DIMENSION SHEET

AEP060-L1

输出端 / OUTPUT

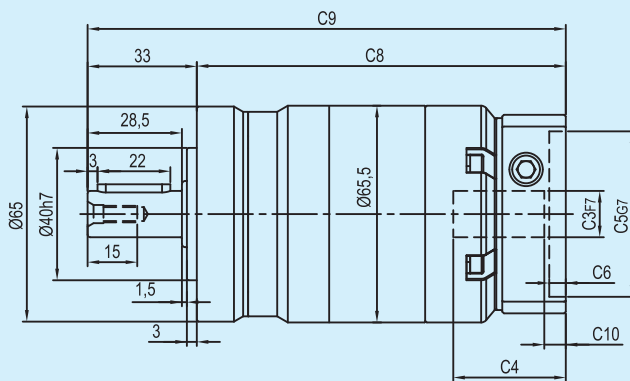
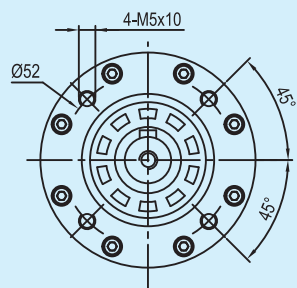


输入端 / INPUT

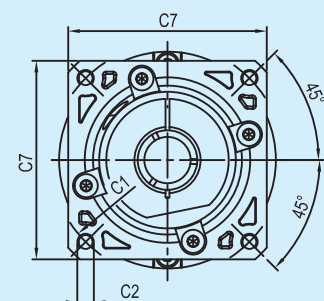


AEP060-L2

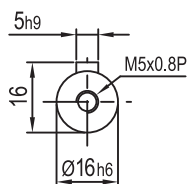
输出端 / OUTPUT



输入端 / INPUT



输出轴径 / Output Diameter



尺寸	C1	C2	C3	C4	C5	C6	C7	C8	C9	C10
AEP060-L1	Ø66.7	4-M4x10	Ø6.35, Ø8	34	Ø38.1	5	60	82.5	115.5	5.5
AEP060-L2	Ø70	4-M4x10, 4-M5x12	Ø11, Ø14	34	Ø50	5	60	111.5	144.5	5.5
AEP060-L1	Ø90	4-M5x12, 4-M6x14	Ø19	42	Ø70	6.5	80	89	122	12
AEP060-L2								118	151	12

* C1~C7是公制标准马达连接板之尺寸,可根据客户要求单独定做。

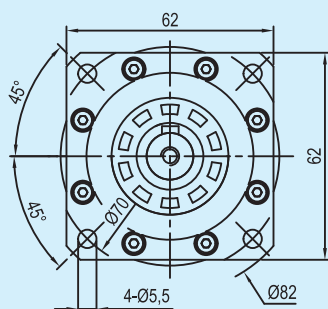
* C1~C7are motor(metric standard) specific dimensions, which could be customised.



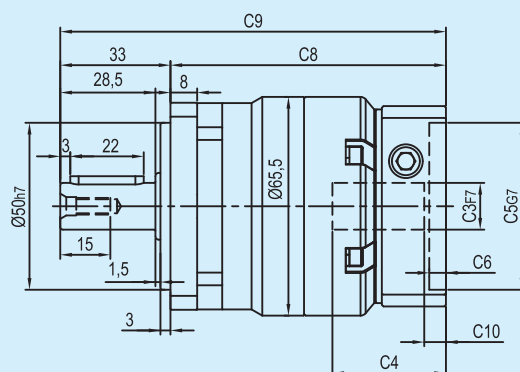
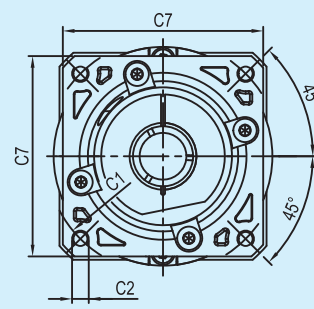
外形尺寸图表 / OUTLINE DIMENSION SHEET

AFP060-L1

输出端/OUTPUT

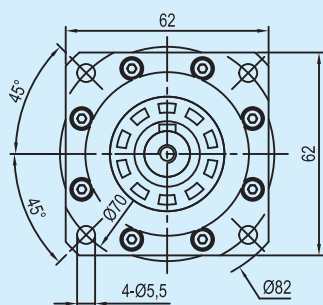


输入端/ INPUT

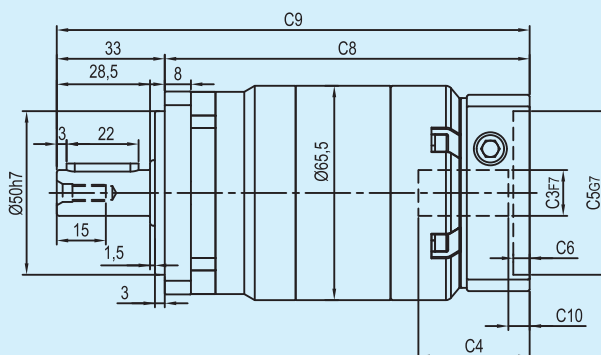
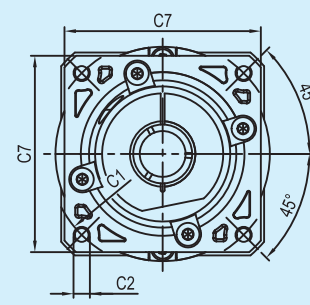


AFP060-L2

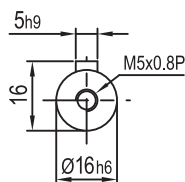
输出端/OUTPUT



输入端/ INPUT



输出轴径/Output Diameter



尺寸	C1	C2	C3	C4	C5	C6	C7	C8	C9	C10
AFP060-L1	Ø66.7	4-M4x10	Ø6.35, Ø8	34	Ø38.1	5	60	82.5	115.5	5.5
AFP060-L2								111.5	144.5	5.5
AFP060-L1	Ø70	4-M4x10, 4-M5x12	Ø11, Ø14	34	Ø50	5	60	82.5	115.5	5.5
AFP060-L2								111.5	144.5	5.5
AFP060-L1	Ø90	4-M5x12, 4-M6x14	Ø19	42	Ø70	6.5	80	89	122	12
AFP060-L2								118	151	12

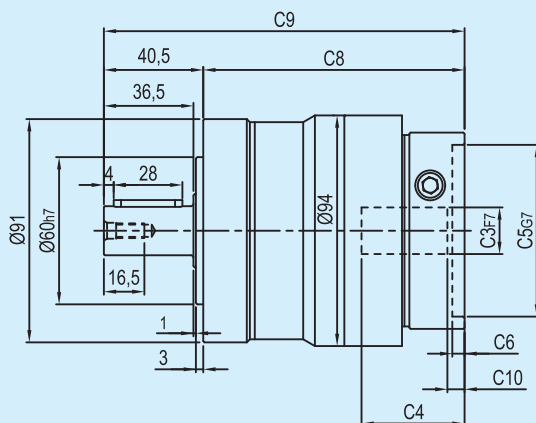
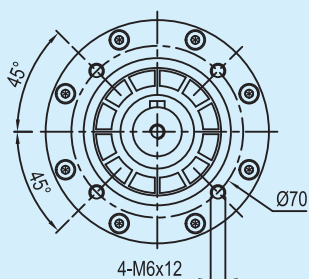
* C1~C7是公制标准马达连接板之尺寸,可根据客户要求单独定做。

* C1~C7are motor(metric standard) specific dimensions, which could be customised.

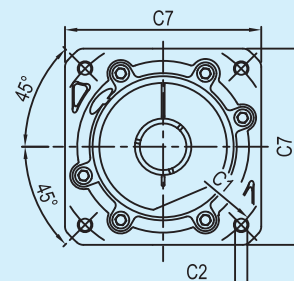
外形尺寸图表 / OUTLINE DIMENSION SHEET

AEP090-L1

输出端 / OUTPUT

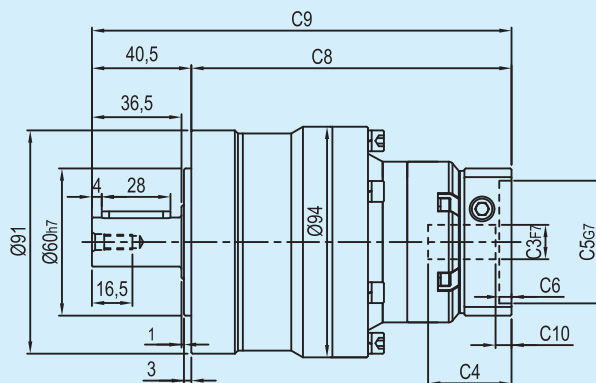
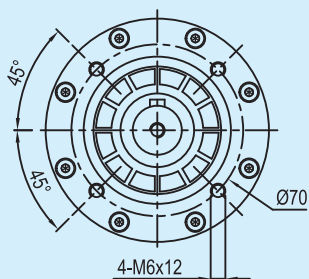


输入端 / INPUT

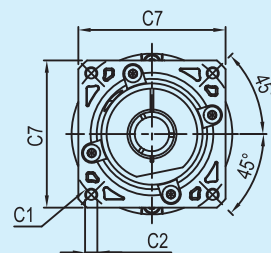


AEP090-L2

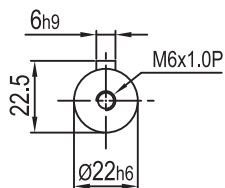
输出端 / OUTPUT



输入端 / INPUT



输出轴径 / Output Diameter



尺寸	C1	C2	C3	C4	C5	C6	C7	C8	C9	C10
AEP090-L1	Ø90	4-M5x12, 4-M6x14	Ø19	42	Ø70	6.5	80	106.5	147	7
	Ø100	4-M6x14	Ø16	42	Ø80	6.5	86	106.5	147	6
AEP090-L1	Ø115	4-M8x20	Ø19, Ø22	56.5	Ø95	8	100	122	162.5	16.5
	Ø145	4-M8x20	Ø19, Ø22, Ø24	59	Ø110	11	130	124.5	165	19
AEP090-L2	Ø66.7	4-M4x10	Ø8	34	Ø38.1	5	60	130.5	171	5.5
	Ø70	4-M4x10, 4-M5x12	Ø11, Ø14	34	Ø50	5	60	130.5	171	5.5
AEP090-L2	Ø90	4-M5x12, 4-M6x14	Ø19	42	Ø70	6.5	80	137	177.5	12
	Ø100	4-M6x14	Ø16	42	Ø80	6.5	86	137	177.5	11

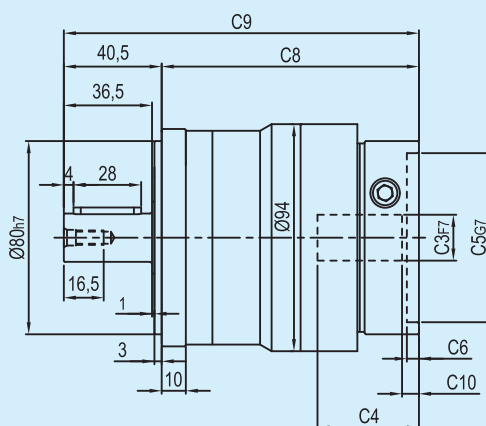
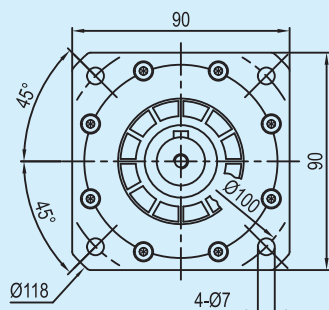
* C1~C7是公制标准马达连接板之尺寸,可根据客户要求单独定做。

* C1~C7are motor(metric standard) specific dimensions, which could be customised.

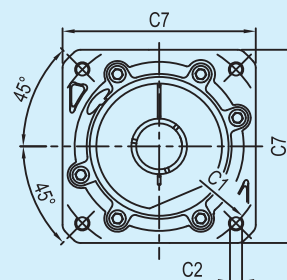
外形尺寸图表 / OUTLINE DIMENSION SHEET

AFP090-L1

输出端/OUTPUT

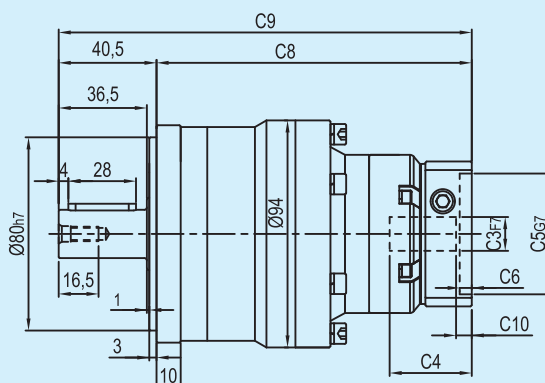
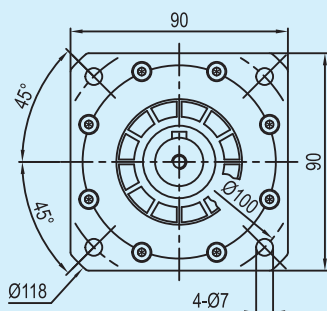


输入端/INPUT

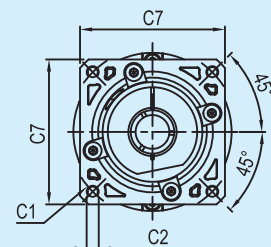


AFP090-L2

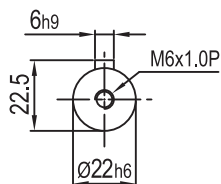
输出端/OUTPUT



输入端/INPUT



输出轴径/Output Diameter



尺寸	C1	C2	C3	C4	C5	C6	C7	C8	C9	C10
AFP090-L1	Ø90	4-M5x12,4-M6x14	Ø19	42	Ø70	6.5	80	106.5	147	7
	Ø100	4-M6x14	Ø16	42	Ø80	6.5	86	106.5	147	6
	Ø115	4-M8x20	Ø19,Ø22	56.5	Ø95	8	100	122	162.5	16.5
	Ø145	4-M8x20	Ø19,Ø22,Ø24	59	Ø110	11	130	124.5	165	19
AFP090-L2	Ø66.7	4-M4x10	Ø8	34	Ø38.1	5	60	130.5	171	5.5
	Ø70	4-M4x10,4-M5x12	Ø11,Ø14	34	Ø50	5	60	130.5	171	5.5
	Ø90	4-M5x12,4-M6x14	Ø19	42	Ø70	6.5	80	137	177.5	12
	Ø100	4-M6x14	Ø16	42	Ø80	6.5	86	137	177.5	11

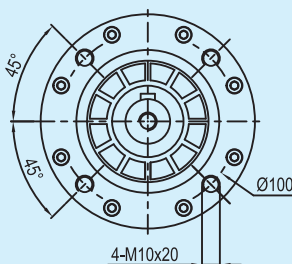
* C1~C7是公制标准马达连接板之尺寸,可根据客户要求单独定做。

* C1~C7are motor(metric standard) specific dimensions, which could be customised.

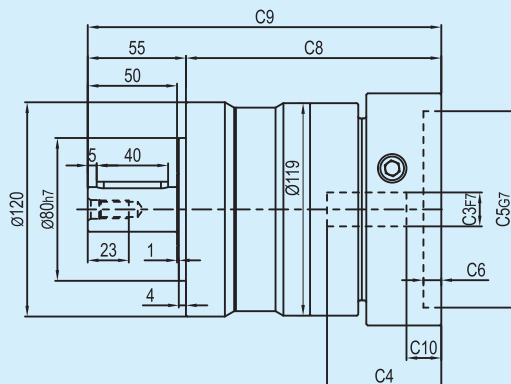
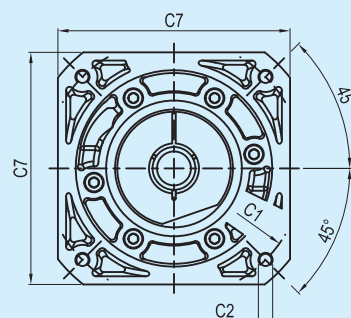
外形尺寸图表 / OUTLINE DIMENSION SHEET

AEP115-L1

输出端/ OUTPUT

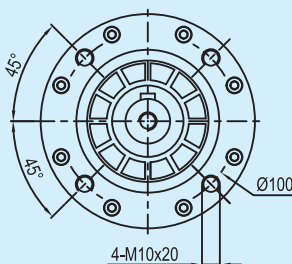


输入端/INPUT

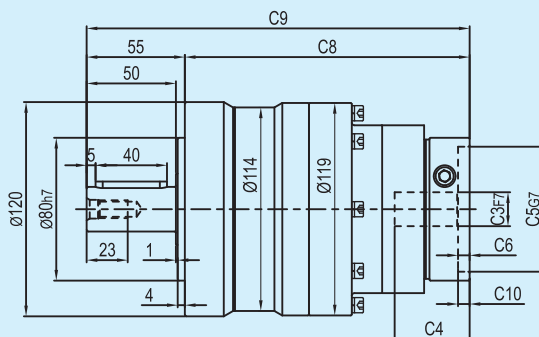
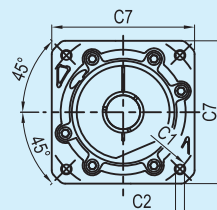


AEP115-L2

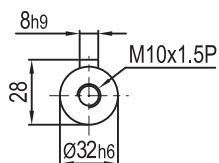
输出端 /OUTPUT



输入端/ INPUT



输出轴径/Output Diameter



尺寸	C1	C2	C3	C4	C5	C6	C7	C8	C9	C10
AEP115-L1	Ø145	4-M8x20	Ø19,Ø22,Ø24	64	Ø110	10	130	143	198	19.5
	Ø200	4-M12x28	Ø35	81	Ø114.3	10	180	160.5	215.5	28
AEP115-L2	Ø90	4-M5x12, 4-M6x14	Ø19	42	Ø70	6.5	80	159.5	214.5	7
	Ø100	4-M6x14	Ø16	42	Ø80	6.5	86	159.5	214.5	6
	Ø115	4-M8x20	Ø19,Ø22	56.5	Ø95	8	100	175	230	16.5
	Ø145	4-M8x20	Ø19,Ø22,Ø24	59	Ø110	11	130	177.5	232.5	19

* C1~C7是公制标准马达连接板之尺寸,可根据客户要求单独定做。

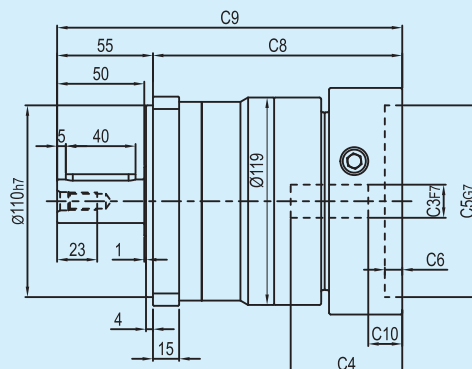
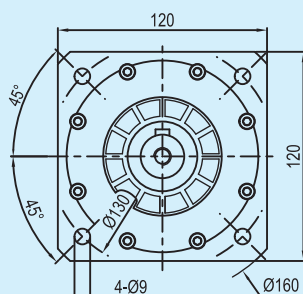
* C1~C7are motor(metric standard) specific dimensions, which could be customised.



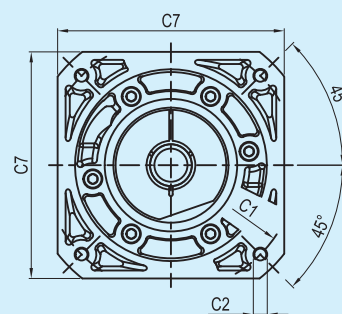
外形尺寸图表 / OUTLINE DIMENSION SHEET

AFP115-L1

输出端/OUTPUT

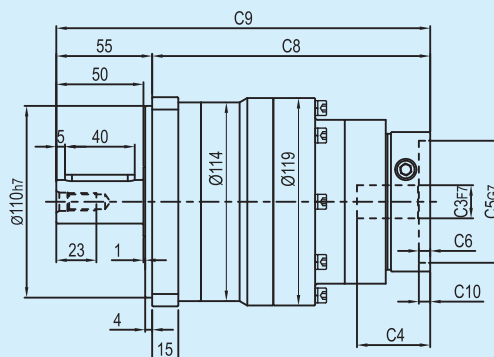
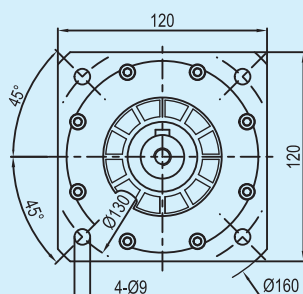


输入端/ INPUT

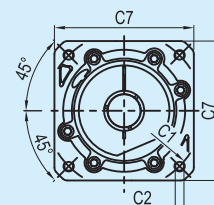


AFP115-L2

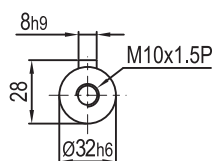
输出端/OUTPUT



输入端/ INPUT



输出轴径/Output Diameter



尺寸	C1	C2	C3	C4	C5	C6	C7	C8	C9	C10
AFP115-L1	Ø145	4-M8x20	Ø19, Ø22, Ø24	64	Ø110	10	130	143	198	19.5
AFP115-L1	Ø200	4-M12x28	Ø35	81	Ø114.3	10	180	160.5	215.5	28
AFP115-L2	Ø90	4-M5x12, 4-M6x14	Ø19	42	Ø70	6.5	80	159.5	214.5	7
	Ø100	4-M6x14	Ø16	42	Ø80	6.5	86	159.5	214.5	6
AFP115-L2	Ø115	4-M8x20	Ø19, Ø22	56.5	Ø95	8	100	175	230	16.5
	Ø145	4-M8x20	Ø19, Ø22, Ø24	59	Ø110	11	130	177.5	232.5	19

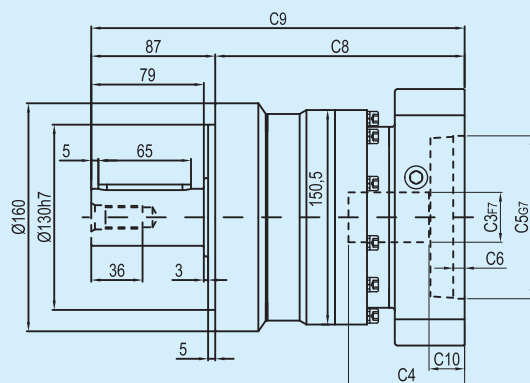
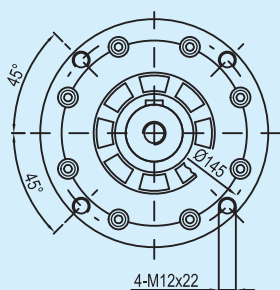
* C1~C7是公制标准马达连接板之尺寸,可根据客户要求单独定做。

* C1~C7are motor(metric standard) specific dimensions, which could be customised.

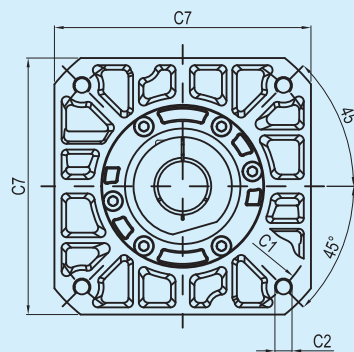
外形尺寸图表 / OUTLINE DIMENSION SHEET

AEP160-L1

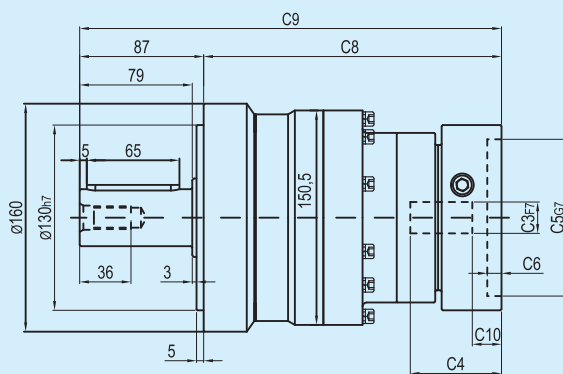
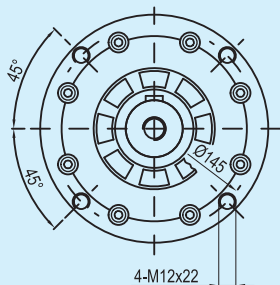
输出端 / OUTPUT



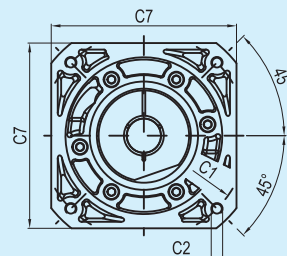
输入端 / INPUT



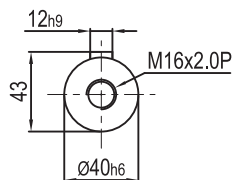
输出端 / OUTPUT



输入端 / INPUT



输出轴径 / Output Diameter



尺寸	C1	C2	C3	C4	C5	C6	C7	C8	C9	C10
AEP160-L1	Ø145	4-M8x20	Ø22, Ø24	72	Ø110	11	130	165	252	19.5
	Ø200	4-M12x28	Ø35	81.5	Ø114.3	8	180	175	262	25
AEP160-L2	Ø145	4-M8x20	Ø19, Ø22, Ø24	64	Ø110	10	130	209	296	19.5
	Ø200	4-M12x28	Ø35	81	Ø114.3	10	180	226.5	313.5	28

* C1~C7是公制标准马达连接板之尺寸,可根据客户要求单独定做。

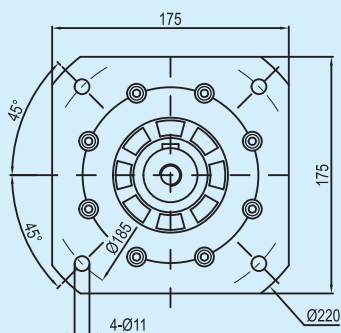
* C1~C7are motor(metric standard) specific dimensions, which could be customised.



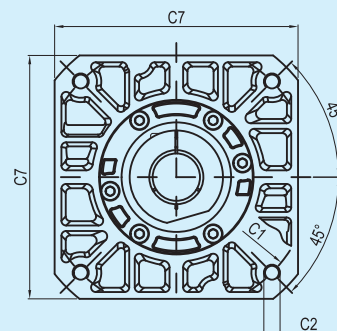
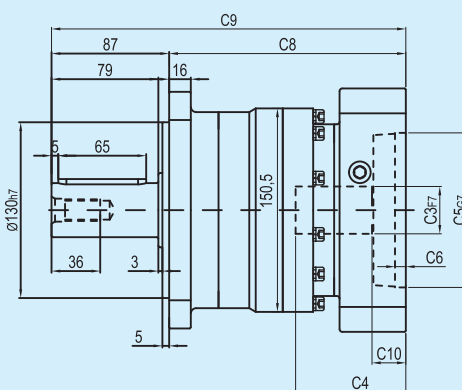
外形尺寸图表 / OUTLINE DIMENSION SHEET

AFP160-L1

输出端/OUTPUT

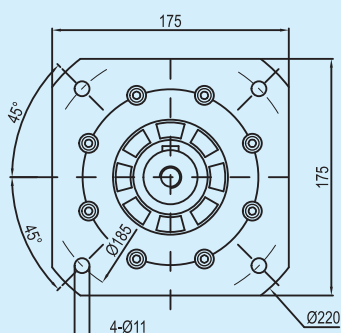


输入端/ INPUT

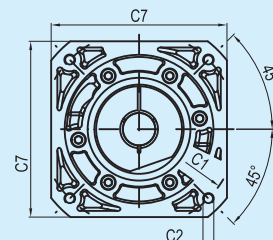
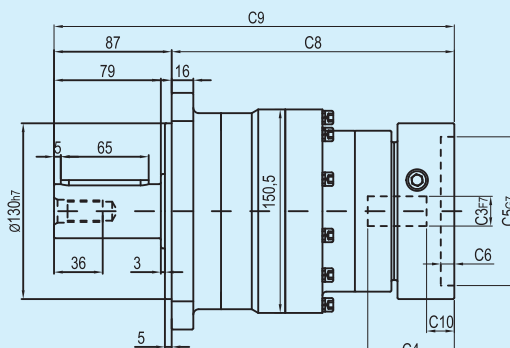


AFP160-L2

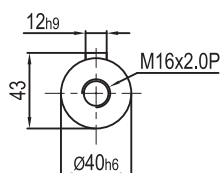
输出端/OUTPUT



输入端/ INPUT



输出轴径/Output Diameter

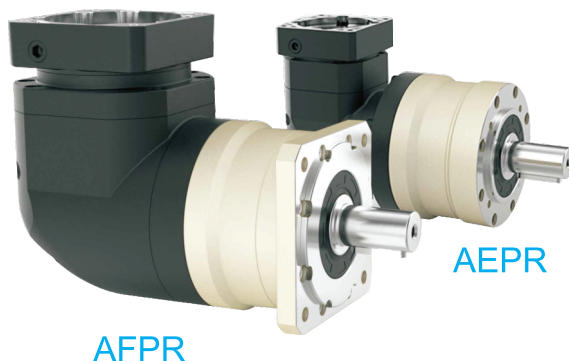


尺寸	C1	C2	C3	C4	C5	C6	C7	C8	C9	C10
AFP160-L1	Ø145	4-M8x20	Ø22, Ø24	72	Ø110	11	130	165	252	19.5
	Ø200	4-M12x28	Ø35	81.5	Ø114.3	8	180	175	262	25
AFP160-L2	Ø145	4-M8x20	Ø19, Ø22, Ø24	64	Ø110	10	130	209	296	19.5
	Ø200	4-M12x28	Ø35	81	Ø114.3	10	180	226.5	313.5	28

* C1~C7是公制标准马达连接板之尺寸,可根据客户要求单独定做。

* C1~C7are motor(metric standard) specific dimensions, which could be customised.

型号说明 / MODEL ILLUMINATE



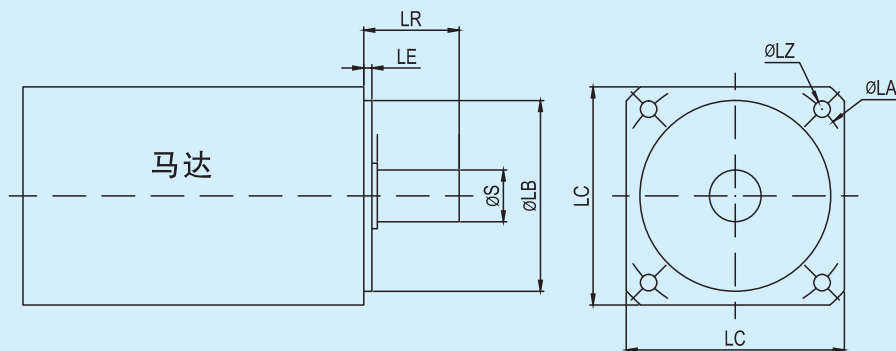
型号定义 / MODEL ILLUMINATE

AEPR060	—	10	—	S3	—	马达
减速机型式： AEPR060/AFPR060/AEPR090/AFPR090 AEPR115/AFPR115/AEPR160/AFPR160		背隙		马达型号： 1-马达制造商及型号 2-马达安装尺寸		
减速比：单级(L1)：3,4,5,6,7,8,10,14,20 双级(L2)：12,15,20,25,30,35, 40,50,60,70,80,100, 120,140,160,200						

选用范例：AEPR060-10-S3-MHMD-042G1U

型号定义② AEPR060-10-S3-50*3/14*30/70/M4

LB*LE S*LR LA LZ



减速机性能资料 / GEAR BOX PERFORMANCE INFORMATION

规格		级数	减速比 ¹	AEPR060 AFPR060	AEPR090 AFPR090	AEPR115 AFPR115	AEPR160 AFPR160
额定输出力矩 T_{2N}	Nm	1	3	55	130	208	342
			4	50	140	290	542
			5	60	160	330	650
			6	55	150	310	600
			7	50	140	300	550
			8	50	140	290	542
			10	60	160	330	650
			14	50	140	300	550
		定货时备注L1级	20	40	100	230	450
		2	12	55	130	208	342
			15	55	130	208	342
			20	50	140	290	542
			25	60	160	330	650
			30	55	130	208	342
			35	60	160	330	650
			40	50	140	290	542
			50	60	160	330	650
			60	55	150	310	600
			70	60	160	330	650
			80	50	140	290	542
			100	60	160	330	650
			120	—	150	310	600
			140	—	140	300	550
			160	—	120	260	500
			200	—	100	230	450
最大输出力矩 T_{2B}	Nm	1,2	3~200	3倍额定输出力矩			
额定输入转速 n_1	rpm	1,2	3~200	5,000	4,000	4,000	3,000
最大输入转速 n_{1B}	rpm	1,2	3~200	10,000	8,000	8,000	6,000
背隙 S_3	arcmin	1	3~20	≤13	≤13	≤13	≤13
		2	12~200	≤15	≤15	≤15	≤15
扭转刚性	Nm/arcmin	1,2	3~200	7	14	25	50
容许径向力 F_{2rB}^2	N	1,2	3~200	1,530	3,250	6,700	9,400
容许轴向力 F_{2a1B}^2	N	1,2	3~200	630	1,300	3,000	4,000
容许轴向力 F_{2a2B}^2	N	1,2	3~200	765	1,625	3,350	4,700
使用寿命	hr	1,2	3~200	20,000*			
效率 η	%	1	3~20	≤95%			
		2	12~200	≤92%			
重量	kg	1	3~20	2.1	6.4	13	24.5
		2	12~200	2.5	7.8	14.2	27.5
使用温度	°C	1,2	3~200	-10°C ~ +90°C			
润滑		1,2	3~200	合成润滑油脂			
防护等级		1,2	3~200	IP65			
安装方向		1,2	3~200	任意方向			
噪音值 ($n_1=3000\text{rpm}$)	dB	1,2	3~200	≤63	≤65	≤68	≤70

减速机转动惯量

规格		级数	减速比 ¹	AEPR060 AFPR060	AEPR090 AFPR090	AEPR115 AFPR115	AEPR160 AFPR160
转动惯量 J_1	kg · cm ²	1	3~7	0.35	2.25	6.84	23.4
			8~10	0.07	1.87	6.25	21.8
			14~20	0.07	1.87	6.25	21.8
		2	12~40	0.09	0.35	2.25	6.84
			50	0.09	0.31	1.87	6.25
			60	0.09	0.35	2.25	6.84
			70~100	0.09	0.31	1.87	6.25
			120~200	—	0.31	1.87	6.25

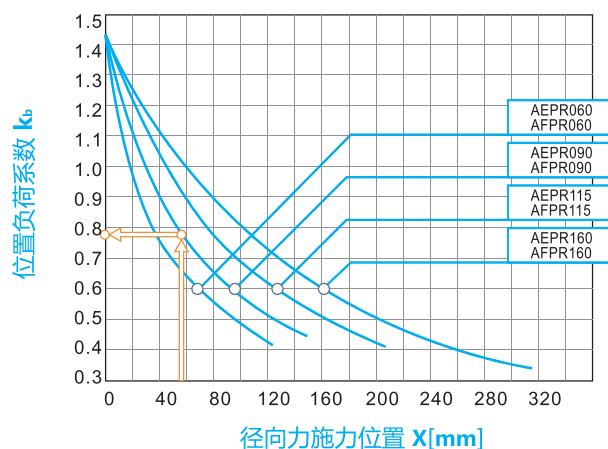
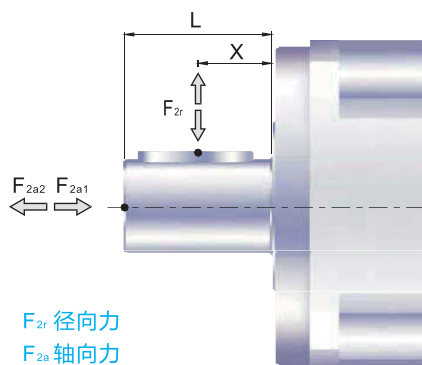
1. 减速比 ($i=N_{in}/N_{out}$)

* 连续运转降低使用寿命二分之一。

2. 输出转速 100rpm 时，作用于输出轴中心位置。

减速机输出轴之容许径向力及轴向力

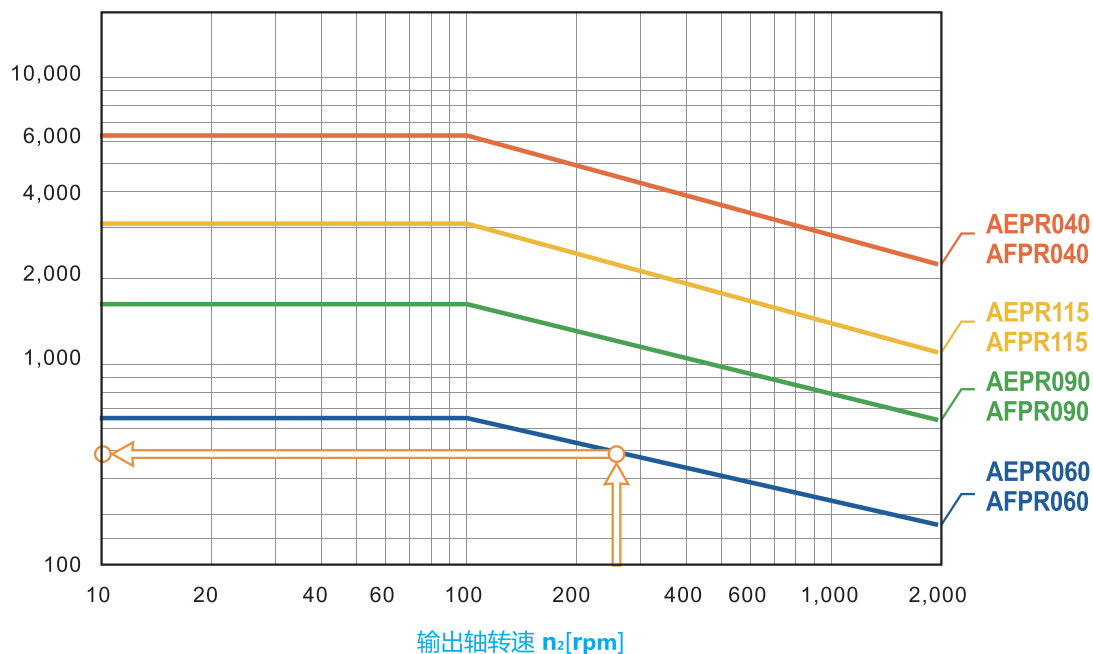
REDUCER OUTPUT SHAFT OF THE PERMISSIBLE RADIAL FORCE AND SHAFT AND FORCE



减速机输出轴所能承受之最大径向力及轴向力,端视内部支撑轴承之设计。

当径向力 F_{2r} 施力不在轴中心位置,越靠近减速机即 $X < 1/2 \times L$,所能承受之容许径向力变大;越远离减速机即 $X > 1/2 \times L$,所能承受之容许径向力变小。藉由上图,依减速机规格及径向施力位置 X ,可查出位置负荷系数 k_b 。

容许径向力 F_{2rB} [N] 施力于轴中心位置



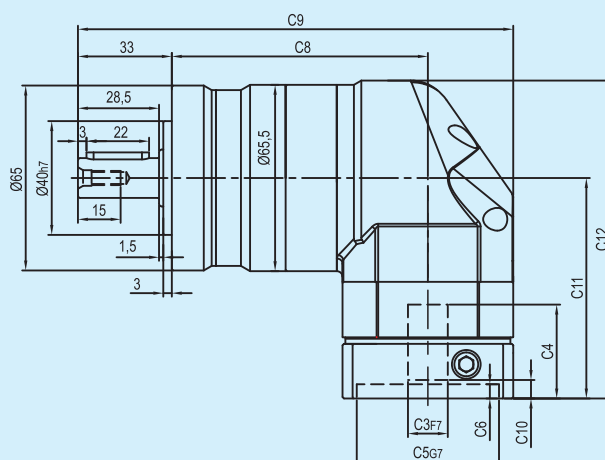
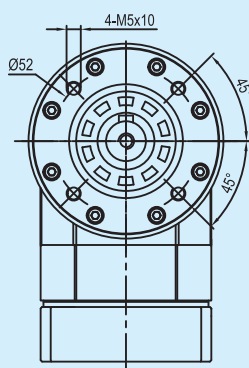
当径向力 F_{2r} 施力于轴中心位置,即 $X = 1/2 \times L$ 时,不同之减速机在不同输出转速运用下,使用寿命为20,000*小时,所能承受之容许径向力,请参照上图。

*连续运转(S1)下之使用寿命降低50%。

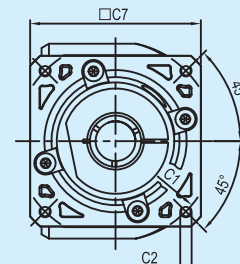
外形尺寸图表 / OUTLINE DIMENSION SHEET

AEPR060-L1

输出端 / OUTPUT

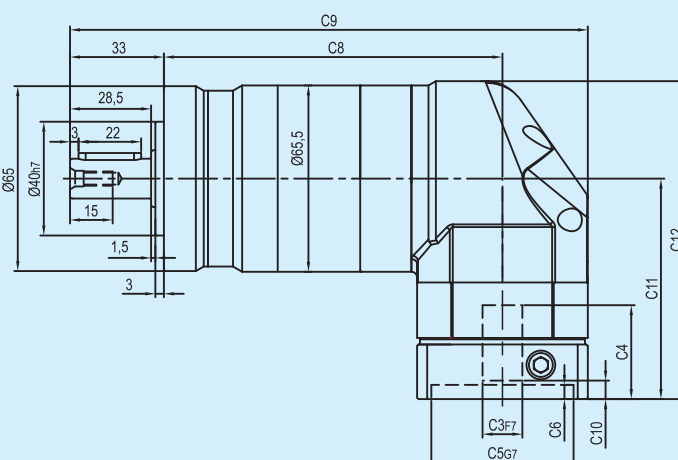
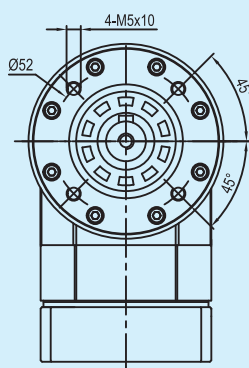


输入端 / INPUT

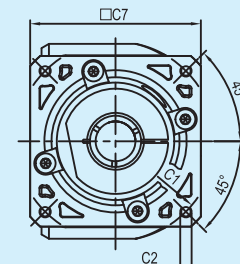


AEPR060-L2

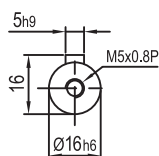
输出端 / OUTPUT



输入端 / INPUT



输出轴径 / Output Diameter



尺寸	C1	C2	C3	C4	C5	C6	C7	C8	C9	C10	C11	C12
AEPR060-L1	Ø66.7	4-M4x10	Ø6.35, Ø8	33	Ø38.1	5	60	90	153	5.5	77.5	111.75
AEPR060-L2	Ø70	4-M4x10, 4-M5x12	Ø11, Ø14	33	Ø50	5	60	90	153	5.5	77.5	111.75
AEPR060-L1	Ø90	4-M5x12, 4-M6x14	Ø19	42.5	Ø70	6.5	80	90	163	12	87	121.25
AEPR060-L2								119	192			

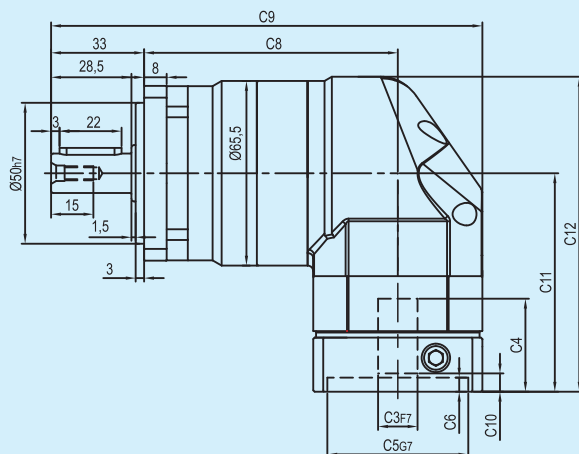
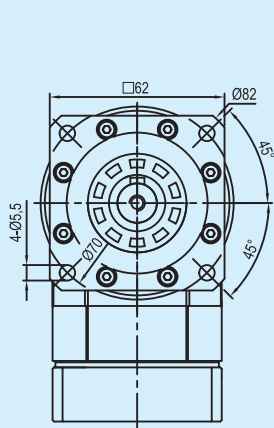
* C1~C7是公制标准马达连接板之尺寸,可根据客户要求单独定做。

* C1~C7are motor(metric standard) specific dimensions, which could be customised.

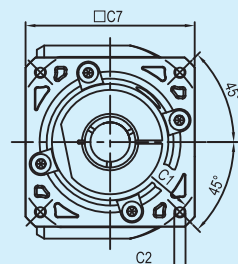
外形尺寸图表 / OUTLINE DIMENSION SHEET

AFPR060-L1

输出端 / OUTPUT

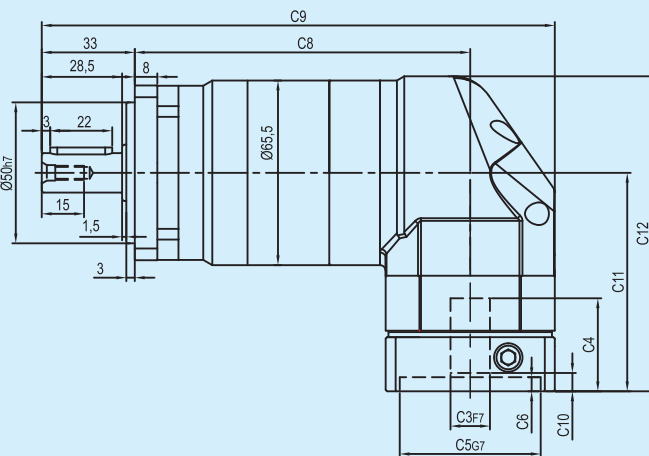
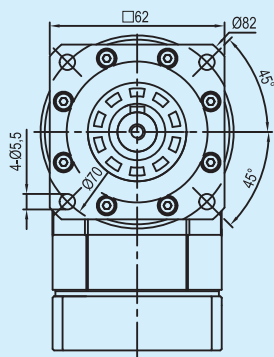


输入端 / INPUT

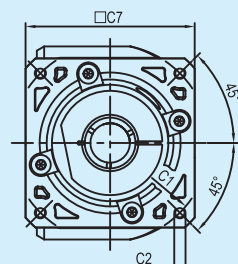


AFPR060-L2

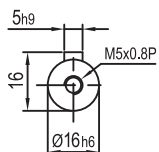
输出端 / OUTPUT



输入端 / INPUT



输出轴径/Output Diameter



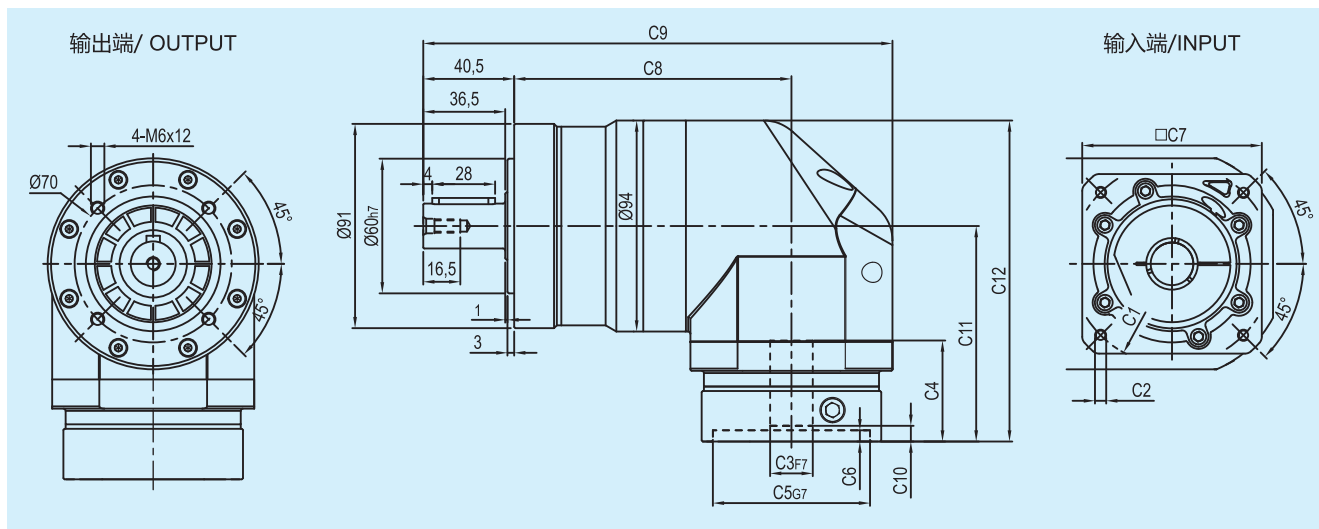
尺寸	C1	C2	C3	C4	C5	C6	C7	C8	C9	C10	C11	C12
AFPR060-L1	Ø66.7	4-M4x10	Ø6.35, Ø8	33	Ø38.1	5	60	90	153	5.5	77.5	111.75
AFPR060-L2								119	182			
AFPR060-L1	Ø70	4-M4x10, 4-M5x12	Ø11, Ø14	33	Ø50	5	60	90	153	5.5	77.5	111.75
AFPR060-L2								119	182			
AFPR060-L1	Ø90	4-M5x12, 4-M6x14	Ø19	42.5	Ø70	6.5	80	90	163	12	87	121.25
AFPR060-L2								119	192			

* C1~C7是公制标准马达连接板之尺寸,可根据客户要求单独定做。

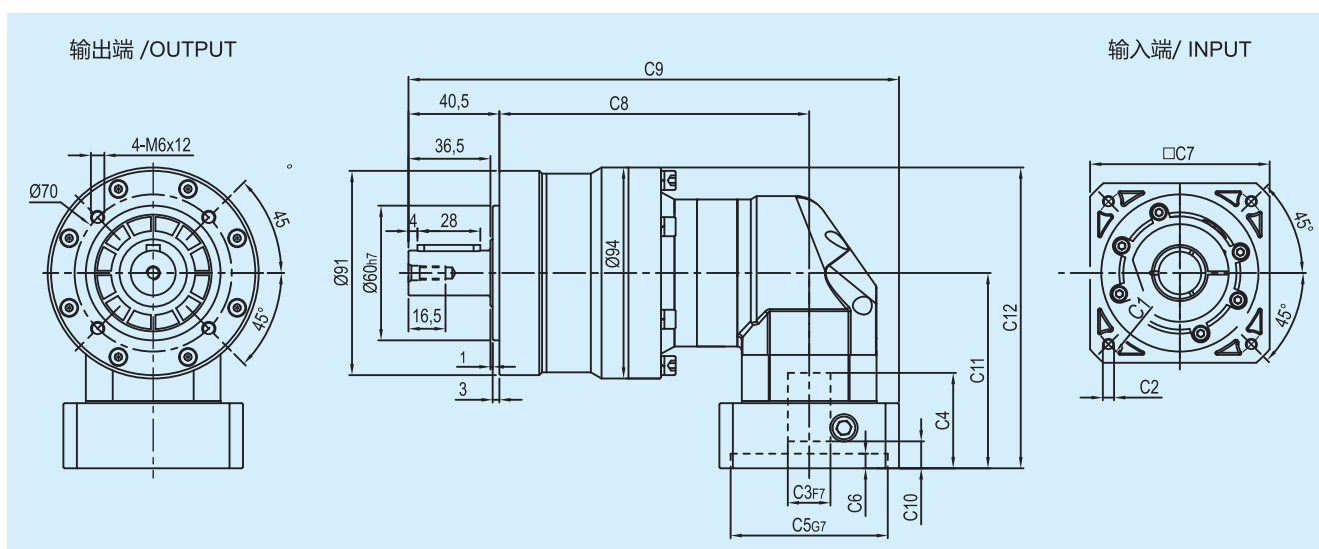
* C1~C7are motor(metric standard) specific dimensions, which could be customised.

外形尺寸图表 / OUTLINE DIMENSION SHEET

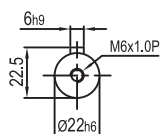
AEPR090-L1



AEPR090-L2



输出轴径/Output Diameter



尺寸	C1	C2	C3	C4	C5	C6	C7	C8	C9	C10	C11	C12
AEPR090-L1	Ø90	4-M5x12, 4-M6x14	Ø19	45	Ø70	6.5	80	123.5	209	7	96	143
	Ø100	4-M6x14	Ø16	45	Ø80	6.5	86	123.5	209	6	96	143
	Ø115	4-M8x20	Ø19, Ø22	56.5	Ø95	8	100	123.5	214	16.5	117.5	164.5
	Ø145	4-M8x20	Ø19, Ø22, Ø24	59	Ø110	11	130	123.5	229	19	120	167
AEPR090-L2	Ø66.7	4-M4x10	Ø8	33	Ø38.1	5	60	138	208.5	5.5	77.5	124.5
	Ø70	4-M4x10, 4-M5x12	Ø11, Ø14	33	Ø50	5	60	138	208.5	5.5	77.5	124.5
	Ø90	4-M5x12, 4-M6x14	Ø19	42.5	Ø70	6.5	80	138	218.5	12	87	134
	Ø100	4-M6x14	Ø16	42.5	Ø80	6.5	86	138	221.5	11	87	134

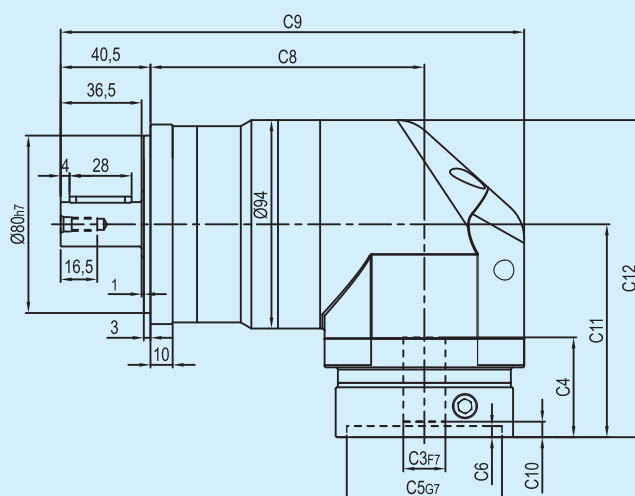
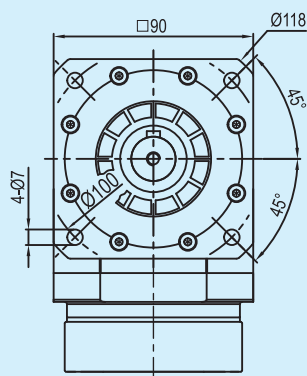
* C1~C7是公制标准马达连接板之尺寸,可根据客户要求单独定做。

* C1~C7are motor(metric standard) specific dimensions, which could be customised.

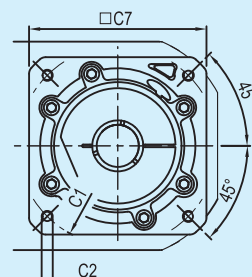
外形尺寸图表 / OUTLINE DIMENSION SHEET

AFPR090-L1

输出端 / OUTPUT

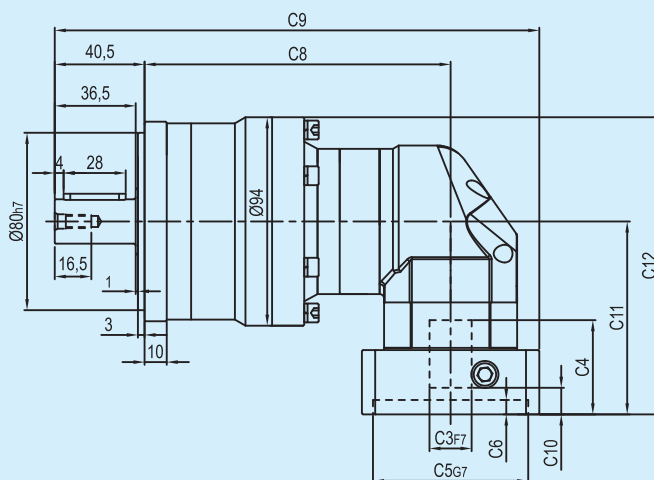
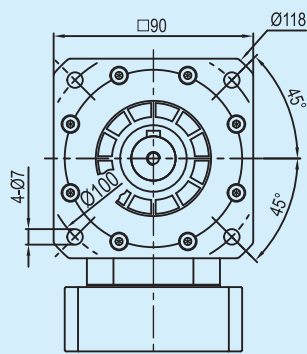


输入端 / INPUT

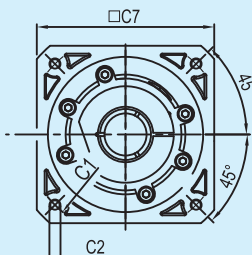


AFPR090-L2

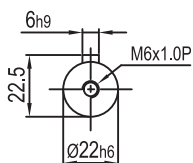
输出端 / OUTPUT



输入端 / INPUT



输出轴径/Output Diameter



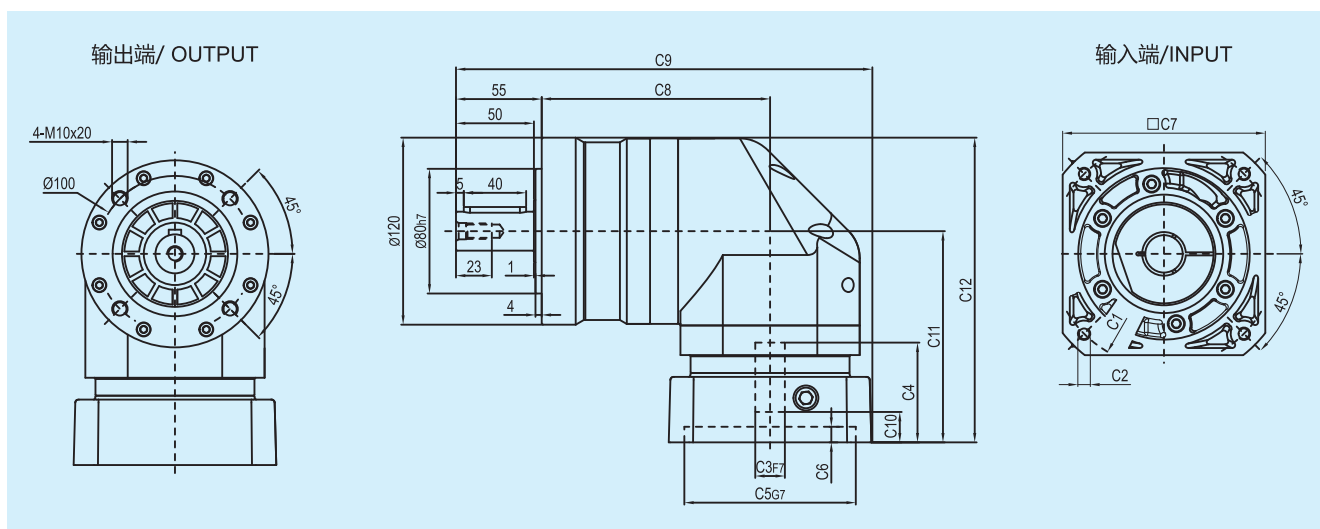
尺寸	C1	C2	C3	C4	C5	C6	C7	C8	C9	C10	C11	C12
AFPR090-L1	Ø90	4-M5x12,4-M6x14	Ø19	45	Ø70	6.5	80	123.5	209	7	96	143
	Ø100	4-M6x14	Ø16	45	Ø80	6.5	86	123.5	209	6	96	143
	Ø115	4-M8x20	Ø19,Ø22	56.5	Ø95	8	100	123.5	214	16.5	117.5	164.5
	Ø145	4-M8x20	Ø19,Ø22,Ø24	59	Ø110	11	130	123.5	229	19	120	167
AFPR090-L2	Ø66.7	4-M4x10	Ø8	33	Ø38.1	5	60	138	208.5	5.5	77.5	124.5
	Ø70	4-M4x10,4-M5x12	Ø11,Ø14	33	Ø50	5	60	138	208.5	5.5	77.5	124.5
	Ø90	4-M5x12,4-M6x14	Ø19	42.5	Ø70	6.5	80	138	218.5	12	87	134
	Ø100	4-M6x14	Ø16	42.5	Ø80	6.5	86	138	221.5	11	87	134

* C1~C7是公制标准马达连接板之尺寸,可根据客户要求单独定做。

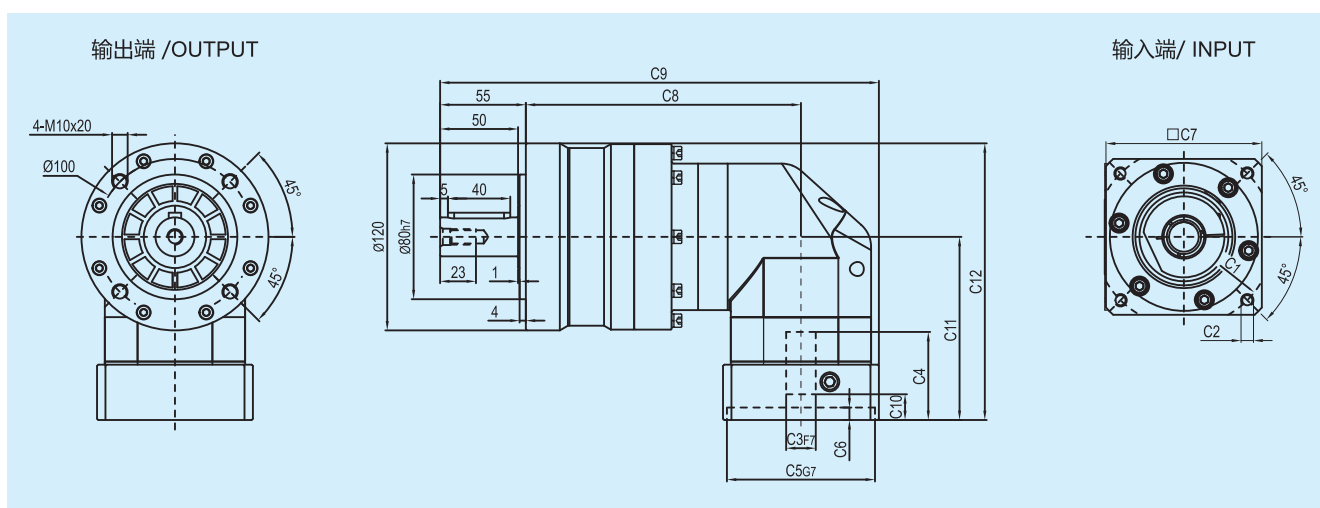
* C1~C7are motor(metric standard) specific dimensions, which could be customised.

外形尺寸图表 / OUTLINE DIMENSION SHEET

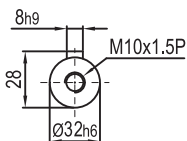
AEPR115-L1



AEPR115-L2



输出轴径/Output Diameter



尺寸	C1	C2	C3	C4	C5	C6	C7	C8	C9	C10	C11	C12
AEPR115-L1	Ø145	4-M8x20	Ø19, Ø22, Ø24	64	Ø110	10	130	146.5	266.5	19.5	135.5	195.5
	Ø200	4-M12x28	Ø35	81	Ø114.3	10	180	146.5	291.5	28	152.5	212.5
AEPR115-L2	Ø90	4-M5x12, 4-M6x14	Ø19	45	Ø70	6.5	80	176.5	276.5	7	96	156
	Ø100	4-M6x14	Ø16	45	Ø80	6.5	86	176.5	276.5	6	96	156
	Ø115	4-M8x20	Ø19, Ø22	56.5	Ø95	8	100	176.5	281.5	16.5	117.5	177.5
	Ø145	4-M8x20	Ø19, Ø22, Ø24	59	Ø110	11	130	176.5	296.5	19	120	180

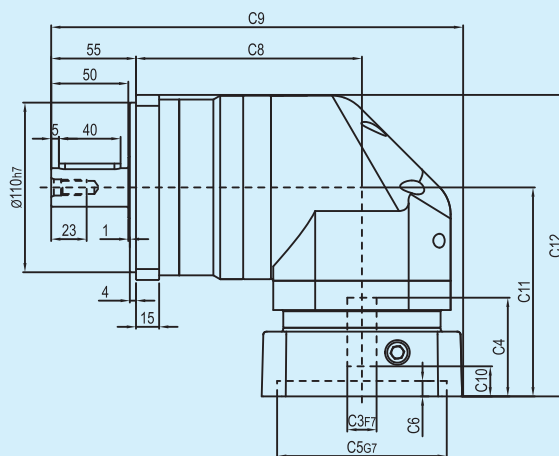
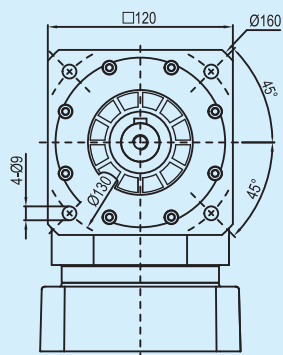
* C1~C7是公制标准马达连接板之尺寸,可根据客户要求单独定做。

* C1~C7are motor(metric standard) specific dimensions, which could be customised.

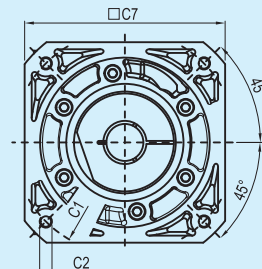
外形尺寸图表 / OUTLINE DIMENSION SHEET

AFPR115-L1

输出端 / OUTPUT

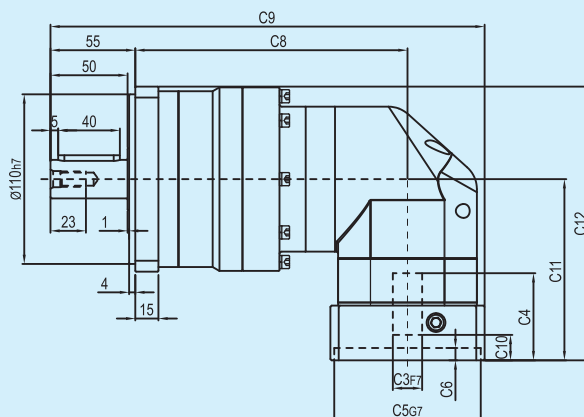
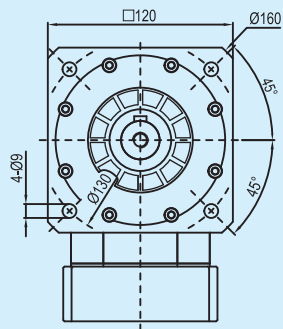


输入端 / INPUT

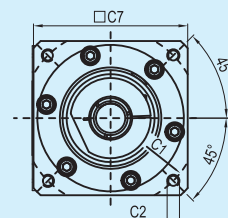


AFPR115-L2

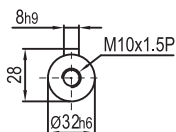
输出端 / OUTPUT



输入端 / INPUT



输出轴径/Output Diameter



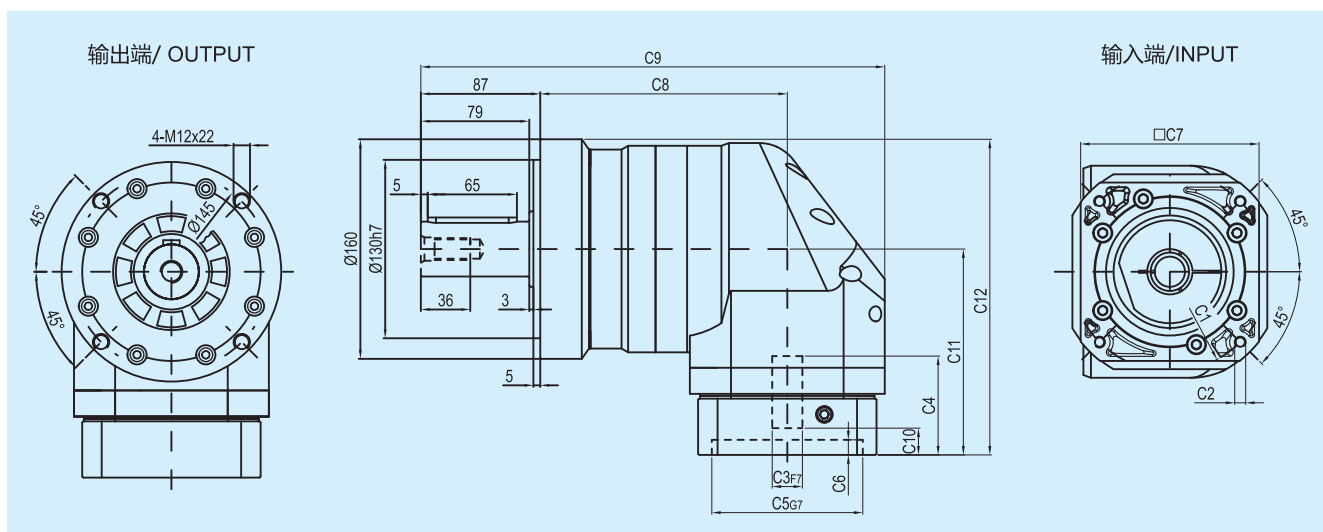
尺寸	C1	C2	C3	C4	C5	C6	C7	C8	C9	C10	C11	C12
AFPR115-L1	Ø145	4-M8x20	Ø19,Ø22,Ø24	64	Ø110	10	130	146.5	266.5	19.5	135.5	195.5
	Ø200	4-M12x28	Ø35	81	Ø114.3	10	180	146.5	291.5	28	152.5	212.5
AFPR115-L2	Ø90	4-M5x12,4-M6x14	Ø19	45	Ø70	6.5	80	176.5	276.5	7	96	156
	Ø100	4-M6x14	Ø16	45	Ø80	6.5	86	176.5	276.5	6	96	156
	Ø115	4-M8x20	Ø19,Ø22	56.5	Ø95	8	100	176.5	281.5	16.5	117.5	177.5
	Ø145	4-M8x20	Ø19,Ø22,Ø24	59	Ø110	11	130	176.5	296.5	19	120	180

* C1~C7是公制标准马达连接板之尺寸,可根据客户要求单独定做。

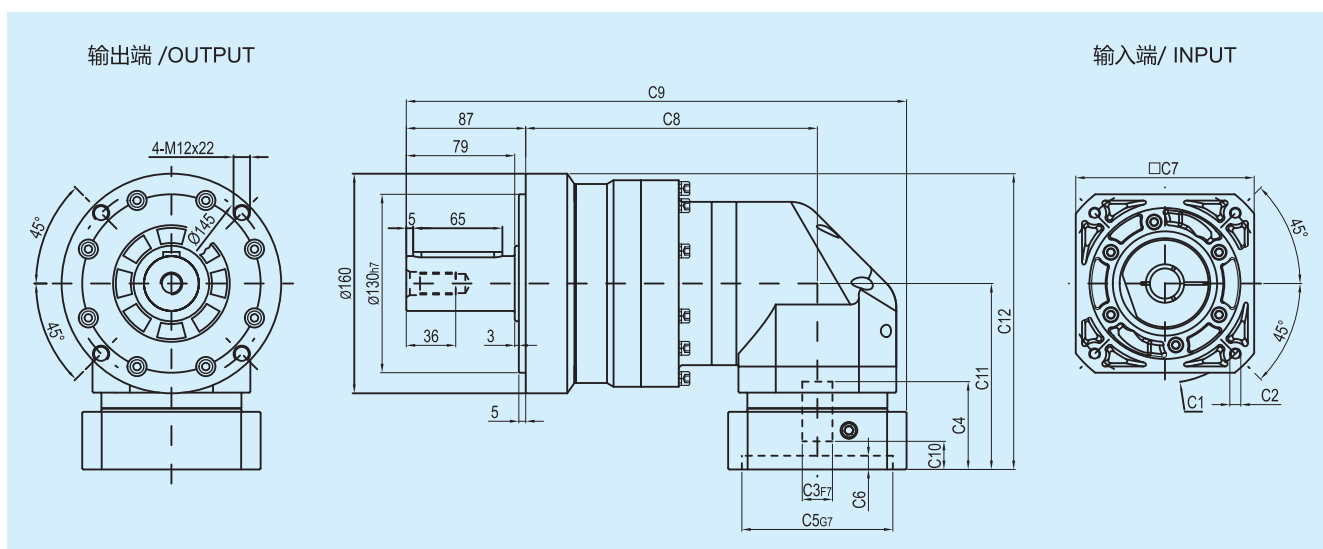
* C1~C7are motor(metric standard) specific dimensions, which could be customised.

外形尺寸图表 / OUTLINE DIMENSION SHEET

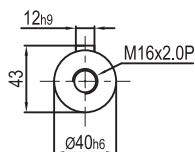
AEPR160-L1



AEPR160-L2



输出轴径/Output Diameter



尺寸	C1	C2	C3	C4	C5	C6	C7	C8	C9	C10	C11	C12
AEPR160-L1	Ø145	4-M8x20	Ø22, Ø24	72	Ø110	11	130	180	338	19.5	150	230
	Ø200	4-M12x28	Ø35	82	Ø114.3	8	180	180	357	25	160	240
AEPR160-L2	Ø145	4-M8x20	Ø19, Ø22, Ø24	64	Ø110	10	130	212.5	364.5	19.5	135.5	215.5
	Ø200	4-M12x28	Ø35	81	Ø114.3	10	180	212.5	389.5	28	152.5	232.5

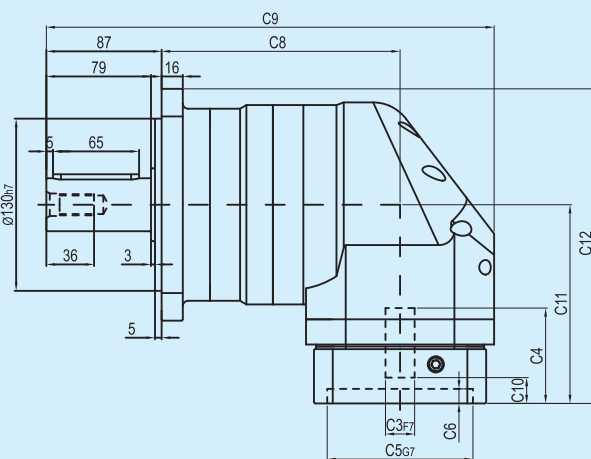
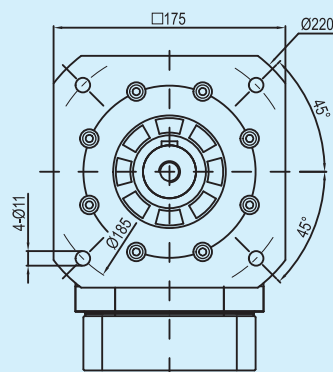
* C1~C7是公制标准马达连接板之尺寸,可根据客户要求单独定做。

* C1~C7are motor(metric standard) specific dimensions, which could be customised.

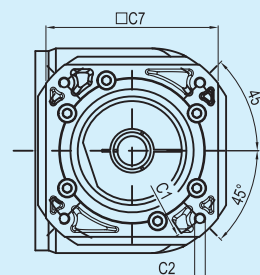
外形尺寸图表 / OUTLINE DIMENSION SHEET

AFPR160-L1

输出端 / OUTPUT

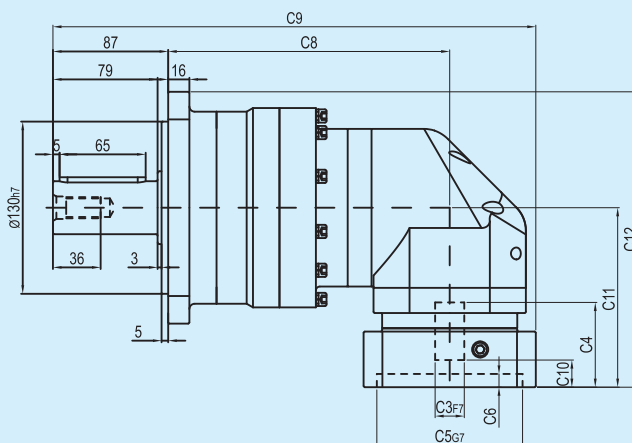
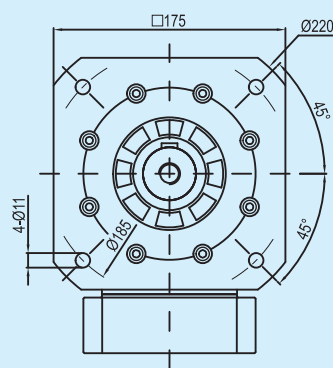


输入端 / INPUT

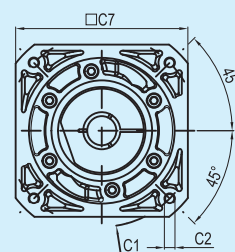


AFPR160-L2

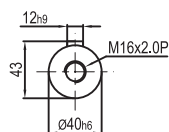
输出端 / OUTPUT



输入端 / INPUT



输出轴径/Output Diameter



尺寸	C1	C2	C3	C4	C5	C6	C7	C8	C9	C10	C11	C12
AFPR160-L1	Ø145	4-M8x20	Ø22, Ø24	72	Ø110	11	130	180	338	19.5	150	237.5
	Ø200	4-M12x28	Ø35	82	Ø114.3	8	180	180	357	25	160	247.5
AFPR160-L2	Ø145	4-M8x20	Ø19, Ø22, Ø24	64	Ø110	10	130	212.5	364.5	19.5	135.5	223
	Ø200	4-M12x28	Ø35	81	Ø114.3	10	180	212.5	389.5	28	152.5	240

* C1~C7是公制标准马达连接板之尺寸,可根据客户要求单独定做。

* C1~C7are motor(metric standard) specific dimensions, which could be customised.