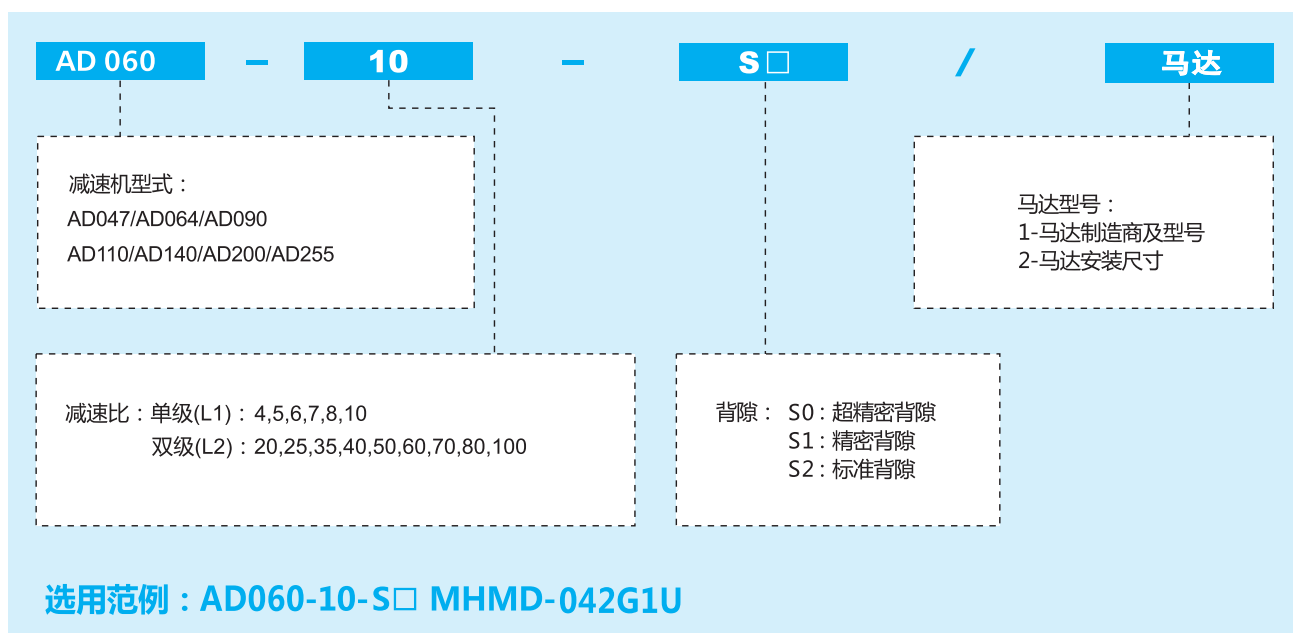




## 型号说明 / MODEL ILLUMINATE

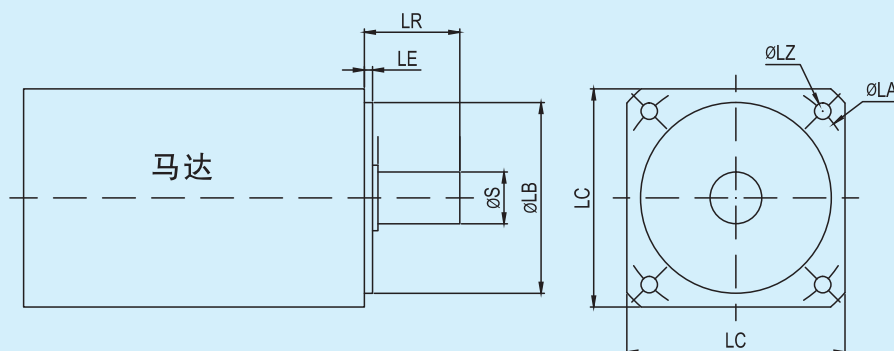


## 型号定义 / MODEL ILLUMINATE



## 型号定义② AD060 -10-S□-50\*3/14\*30/70/M4

LB\*LE S\*LR LA LZ



## 减速机性能资料 / GEAR BOX PERFORMANCE INFORMATION

规 格		级 数	减速比 <sup>1</sup>	AD047	AD064	AD090	AD110	AD140	AD200	AD255
额定输出力矩T <sub>2N</sub>	Nm	1	4	19	48	130	270	560	1,100	1,700
			5	22	60	160	330	650	1,200	2,000
			6	-	55	150	310	600	-	-
			7	19	50	140	300	550	1,100	1,800
			8	17	45	120	260	500	1,000	1,600
		2	10	14	40	100	230	450	520	1,220
			20	19	48	130	270	560	1,100	1,700
			25	22	60	160	330	650	1,200	2,000
			35	22	60	160	330	650	1,200	2,000
			40	22	48	130	270	560	1,200	2,000
			50	22	60	160	330	650	1,200	2,000
			60	-	55	150	310	600	-	-
			70	19	50	140	300	550	1,100	1,800
			80	-	45	120	260	500	-	-
		100	14	40	100	230	450	520	1,220	
最大输出力矩T <sub>2B</sub>	Nm	1,2	4~100	3倍额定输出力矩						
额定输入转速n <sub>1</sub>	rpm	1,2	4~100	5,000	5,000	4,000	4,000	3,000	3,000	2,000
最大输入转速n <sub>1B</sub>	rpm	1,2	4~100	10,000	10,000	8,000	8,000	6,000	6,000	4,000
超精密背隙 S0	arcmin	1	4~100	-	-	≤1	≤1	≤1	≤1	≤1
		2	4~10	-	-	-	≤3	≤3	≤3	≤3
精密背隙 S1	arcmin	1	20~100	≤3	≤3	≤3	≤3	≤3	≤3	≤3
		2	4~10	≤5	≤5	≤5	≤5	≤5	≤5	≤5
标准背隙 S2	arcmin	1	20~100	≤5	≤5	≤5	≤5	≤5	≤5	≤5
		2	4~10	≤7	≤7	≤7	≤7	≤7	≤7	≤7
扭转刚性	Nm/arcmin	1,2	20~100	7	13	31	82	151	440	1,006
最大弯曲力矩M <sub>2KB</sub> <sup>2</sup>	Nm	1,2	4~100	42.5	125	235	430	1,300	3,064	5,900
容许径向力F <sub>2B</sub> <sup>2</sup>	N	1,2	4~100	1,080	2,110	2,310	4,800	6,200	5,450	10,600
使用寿命	hr	1,2	4~100	20,000*						
效率 η	%	1	4~10	≥97%						
		2	20~100	≥94%						
重量	kg	1	4~10	0.7	1.2	3.0	5.6	11.9	31.6	56.1
		2	20~100	1.0	1.6	3.7	7.3	15.9	36.9	70.4
使用温度	℃	1,2	4~100	-10℃~+90℃						
润滑		1,2	4~100	合成润滑油脂						
防护等级		1,2	4~100	IP65						
安装方向		1,2	4~100	任意方向						
噪音值 ( n <sub>1</sub> =3000rpm )	dB	1,2	4~100	≤56	≤58	≤60	≤63	≤65	≤67	≤70

### 减速机转动惯量

规 格	级 数	减速比 <sup>1</sup>	AD047	AD064	AD090	AD110	AD140	AD200	AD255
转动惯量J <sub>i</sub>	1	4	0.03	0.14	0.51	2.87	7.54	25.03	58.31
		5	0.03	0.13	0.47	2.71	7.42	23.29	53.27
		6	-	0.13	0.45	2.65	7.25	-	-
		7	0.03	0.13	0.45	2.62	7.14	22.48	50.97
		8	0.03	0.13	0.45	2.58	7.07	22.48	50.97
		10	0.03	0.13	0.44	2.57	7.03	22.51	50.56
	2	20	0.03	0.03	0.13	0.47	2.71	7.42	23.29
		25	0.03	0.03	0.13	0.47	2.71	7.42	23.29
		35	0.03	0.03	0.13	0.47	2.71	7.42	23.29
		40	0.03	0.03	0.13	0.44	2.57	7.03	22.51
		50	0.03	0.03	0.13	0.44	2.57	7.03	22.51
		60	-	0.03	0.13	0.44	2.57	-	-
		70	0.03	0.03	0.13	0.44	2.57	7.03	22.51
		80	-	0.03	0.13	0.44	2.57	-	-
		100	0.03	0.03	0.13	0.44	2.57	7.03	22.51

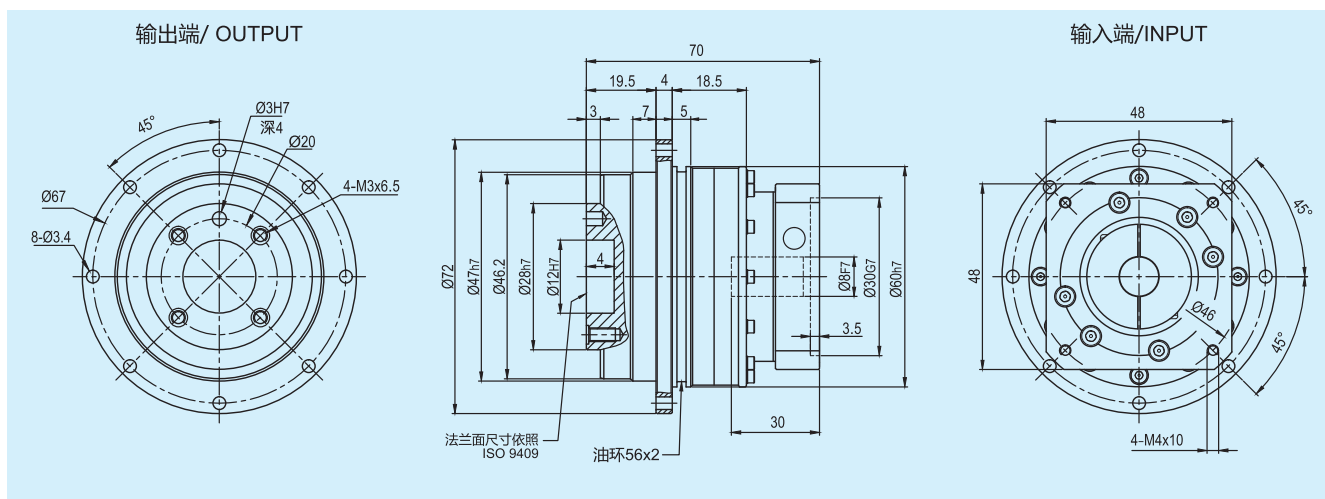
1. 减速比 (  $i = N_{in}/N_{out}$  )

\* 连续运转降低使用寿命二分之一。

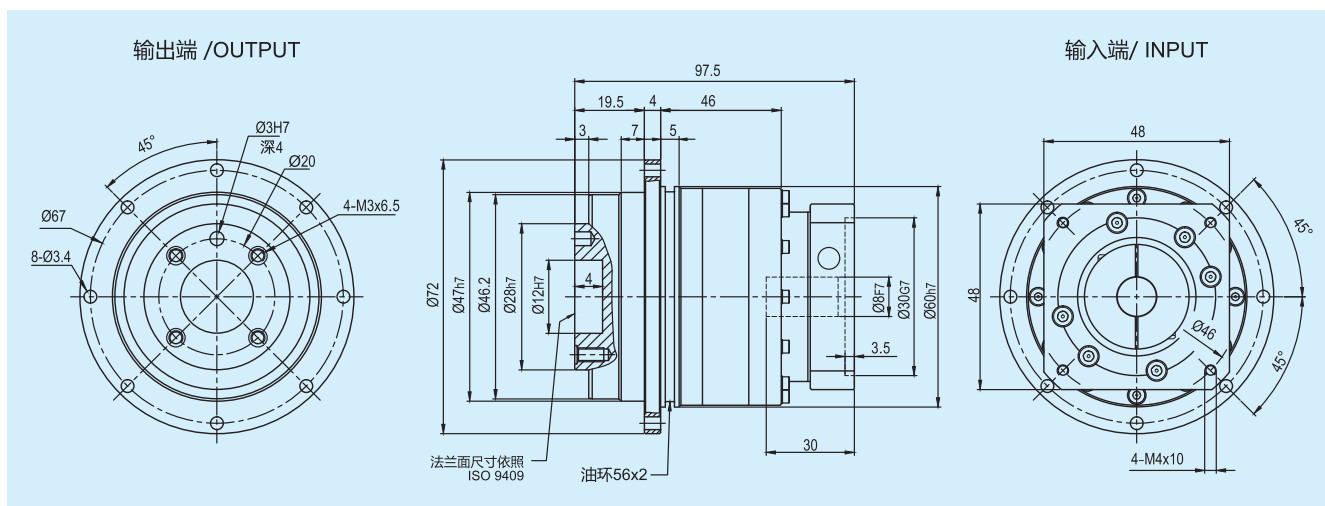
2. 输出转数 100rpm 时，作用于输出轴中心位置。

## 外形尺寸图表 / OUTLINE DIMENSION SHEET

### AD047-L1



### AD047-L2



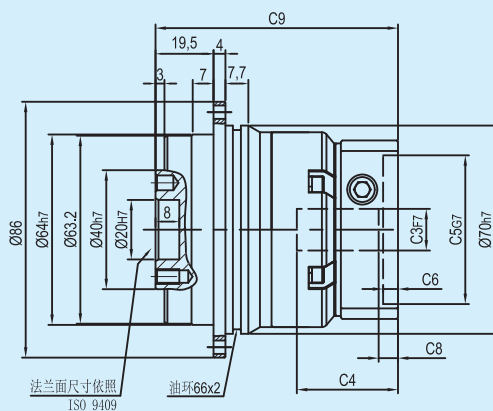
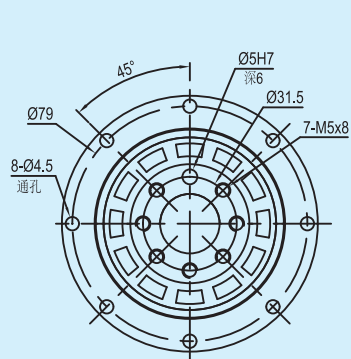
\*输入马达连接板之尺寸,可根据客户要求单独定做。

\*The input motor specific dimensions could be customised.

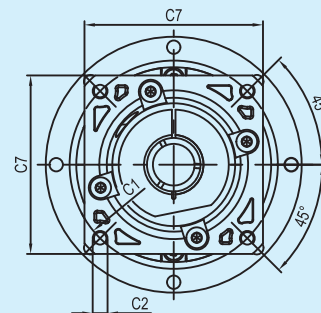
# 外形尺寸图表 / OUTLINE DIMENSION SHEET

## AD064-L1

输出端/OUTPUT

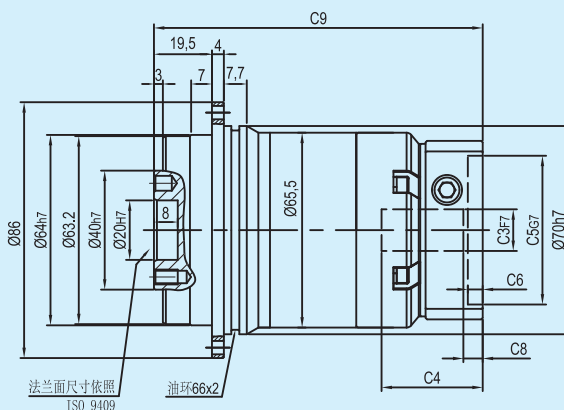
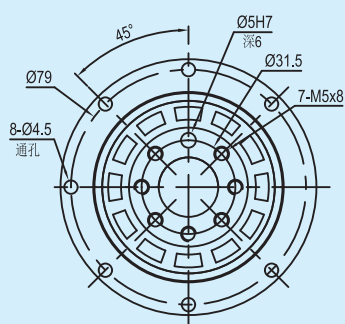


输入端/ INPUT

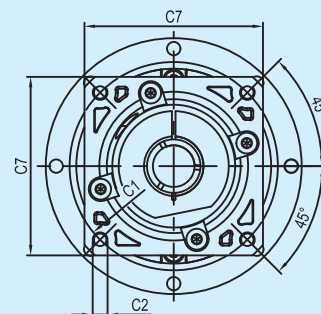


## AD064-L2

输出端/OUTPUT



输入端/ INPUT



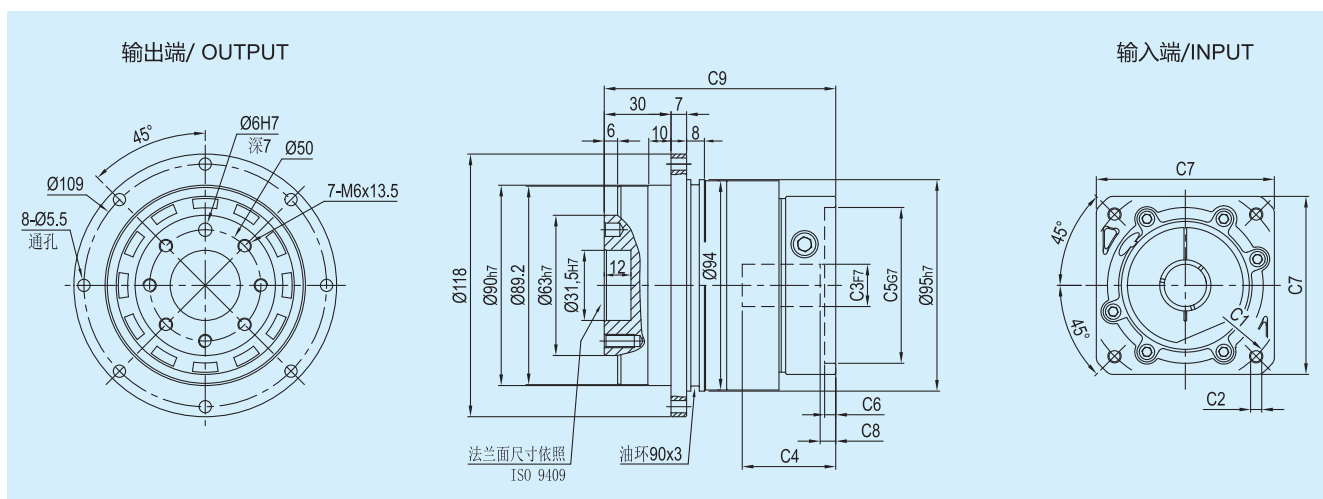
尺寸	C1	C2	C3	C4	C5	C6	C7	C8	C9
AD064-L1	Ø66.7	4-M4x10	Ø8	34	Ø38.1	5	60	5.5	81.5
AD064-L2									110.5
AD064-L1	Ø70	4-M4x10, 4-M5x12	Ø11, Ø14	34	Ø50	5	60	5.5	81.5
AD064-L2									110.5
AD064-L1	Ø90	4-M5x12, 4-M6x14	Ø19	42	Ø70	6.5	80	12	88
AD064-L2									117

\* C1~C7是公制标准马达连接板之尺寸,可根据客户要求单独定做。

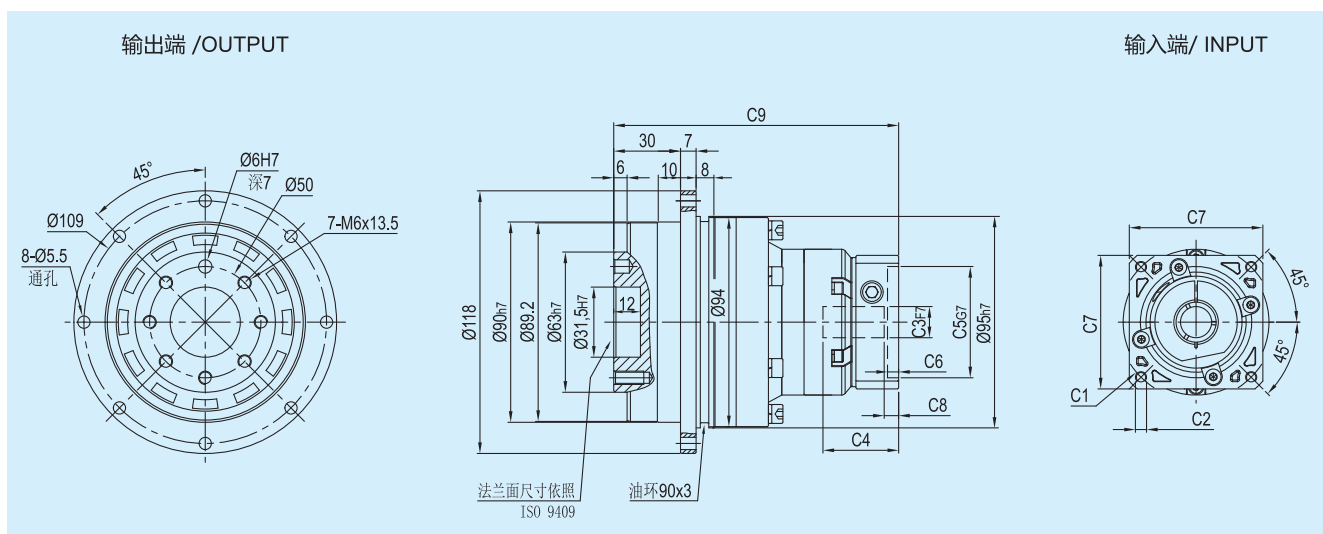
\* C1~C7are motor(metric standard) specific dimensions, which could be customised.

## 外形尺寸图表 / OUTLINE DIMENSION SHEET

## AD090-L1



## AD090-L2



尺寸	C1	C2	C3	C4	C5	C6	C7	C8	C9
AD090-L1	Ø90	4-M5x12 , 4-M6x14	Ø19	42	Ø70	6.5	80	7	104
	Ø100	4-M6x14	Ø16	42	Ø80	6.5	86	6	104
	Ø115	4-M8x20	Ø19,Ø22	56.5	Ø95	8	100	16.5	119.5
	Ø145	4-M8x20	Ø19,Ø22,Ø24	59	Ø110	11	130	19	122
AD090-L2	Ø66.7	4-M4x10	Ø8	34	Ø38.1	5	60	5.5	128
	Ø70	4-M4x10 , 4-M5x12	Ø11,Ø14	34	Ø50	5	60	5.5	128
	Ø90	4-M5x12 , 4-M6x14	Ø19	42	Ø70	6.5	80	12	134.5
	Ø100	4-M6x14	Ø16	42	Ø80	6.5	86	11	134.5

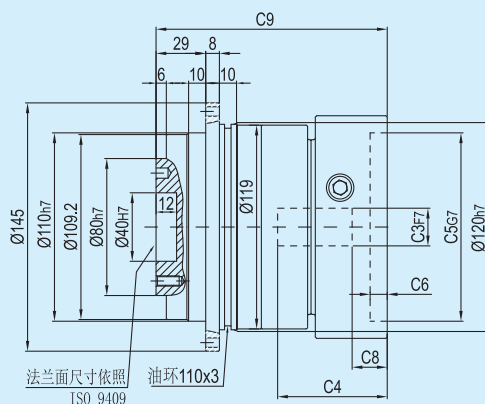
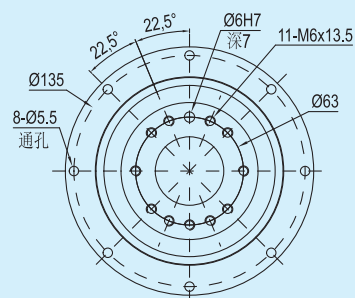
\* C1~C7是公制标准马达连接板之尺寸,可根据客户要求单独定做。

\* C1~C7are motor(metric standard) specific dimensions, which could be customised.

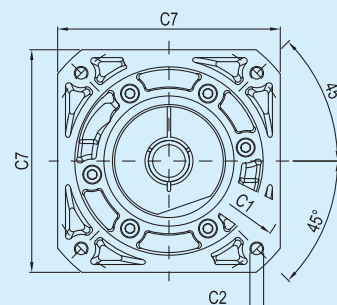
# 外形尺寸图表 / OUTLINE DIMENSION SHEET

## AD110-L1

输出端/OUTPUT

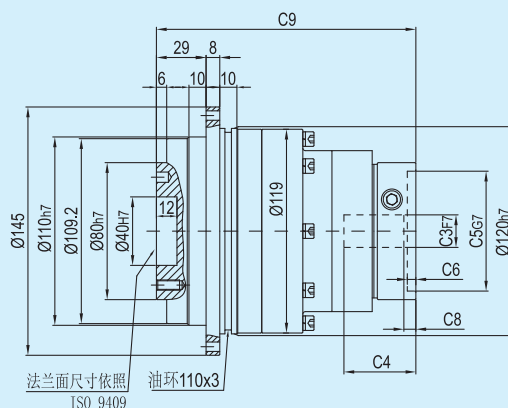
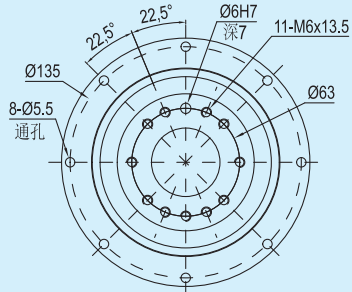


输入端/ INPUT

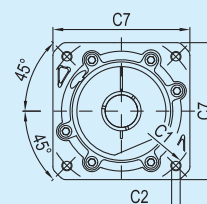


## AD110-L2

输出端/OUTPUT



输入端/ INPUT



尺寸	C1	C2	C3	C4	C5	C6	C7	C8	C9
AD110-L1	Ø145	4-M8x20	Ø19,Ø22,Ø24	64	Ø110	10	130	19.5	135
	Ø200	4-M12x28	Ø35	81	Ø114.3	10	180	28	152.5
AD110-L2	Ø90	4-M5x12, 4-M6x14	Ø19	42	Ø70	6.5	80	7	151.5
	Ø100	4-M6x14	Ø16	42	Ø80	6.5	86	6	151.5
	Ø115	4-M8x20	Ø19,Ø22	56.5	Ø95	8	100	16.5	167
	Ø145	4-M8x20	Ø19,Ø22,Ø24	59	Ø110	11	130	19	169.5

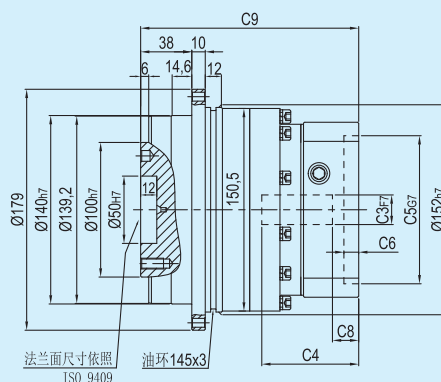
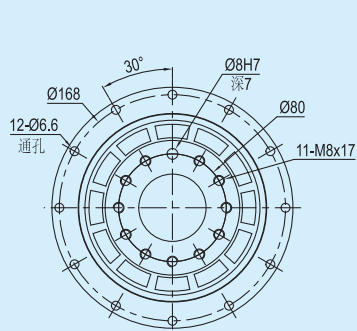
\* C1~C7是公制标准马达连接板之尺寸,可根据客户要求单独定做。

\* C1~C7are motor(metric standard) specific dimensions, which could be customised.

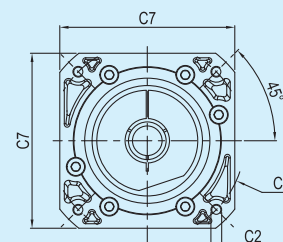
## 外形尺寸图表 / OUTLINE DIMENSION SHEET

## AD140-L1

输出端/ OUTPUT

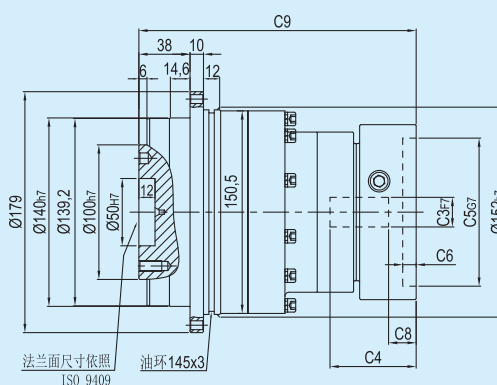
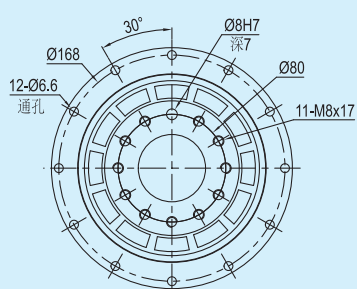


输入端/INPUT

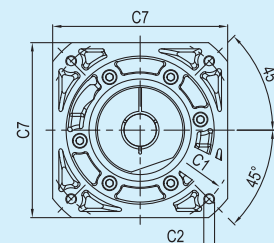


## AD140-L2

输出端 /OUTPUT



输入端/ INPUT



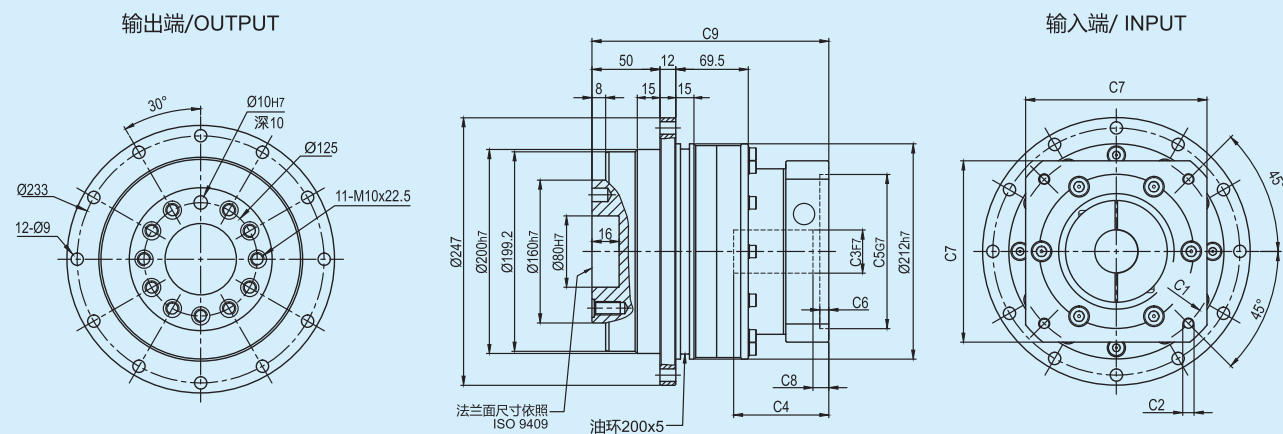
尺寸	C1	C2	C3	C4	C5	C6	C7	C8	C9
AD140-L1	Ø145	4-M8x20	Ø22,Ø24	72	Ø110	11	130	19.5	162
	Ø200	4-M12x28	Ø35	81.5	Ø114.3	8	180	25	172
AD140-L2	Ø145	4-M8x20	Ø19,Ø22,Ø24	64	Ø110	10	130	19.5	206
	Ø200	4-M12x28	Ø35	81	Ø114.3	10	180	28	223.5

\* C1~C7是公制标准马达连接板之尺寸,可根据客户要求单独定做。

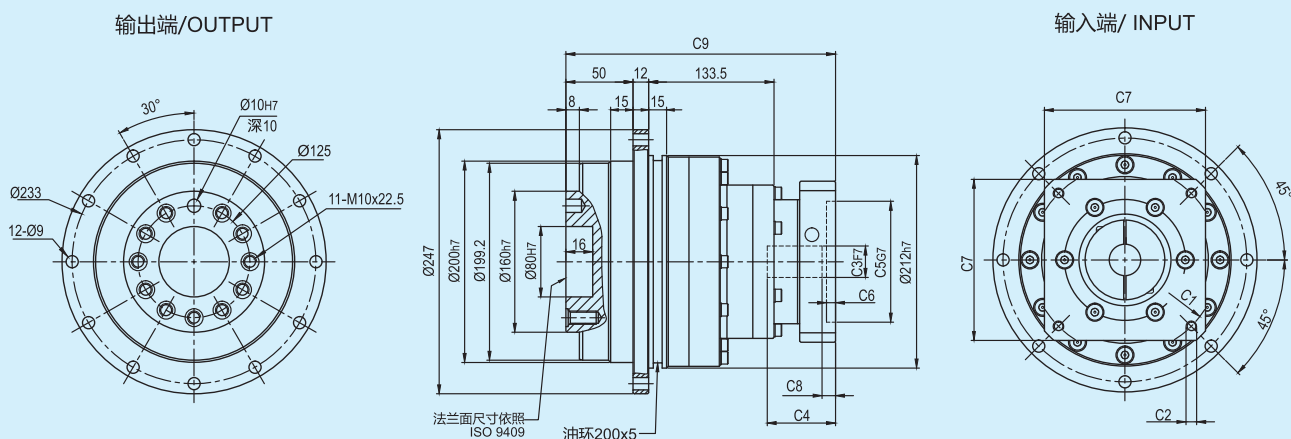
\* C1~C7are motor(metric standard) specific dimensions, which could be customised.

## 外形尺寸图表 / OUTLINE DIMENSION SHEET

## AD200-L1



## AD200-L2



尺寸	C1	C2	C3	C4	C5	C6	C7	C8	C9
AD200-L1	Ø165	4-M10x25	Ø32	86	Ø130	6	168	8.5	199.5
	Ø200	4-M12x28	Ø35	86	Ø114.3	6	180	8.5	199.5
AD200-L2	Ø145	4-M8x25	Ø22,Ø24	75	Ø110	11	130	19	249.5
	Ø200	4-M12x30	Ø35	83	Ø114.3	8	180	28	257.5

\* C1~C7是公制标准马达连接板之尺寸,可根据客户要求单独定做。

\* C1~C7are motor(metric standard) specific dimensions, which could be customised.

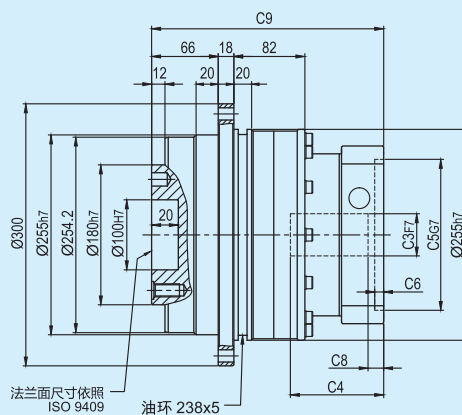
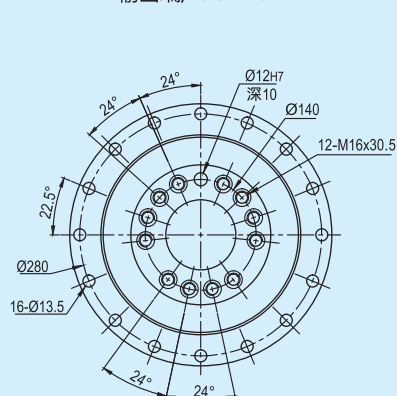




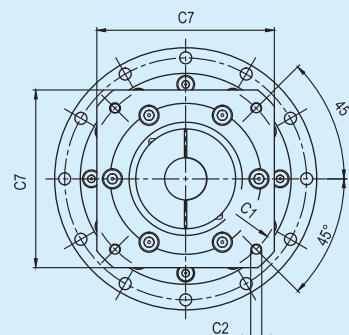
# 外形尺寸图表 / OUTLINE DIMENSION SHEET

## AD255-L1

输出端 / OUTPUT

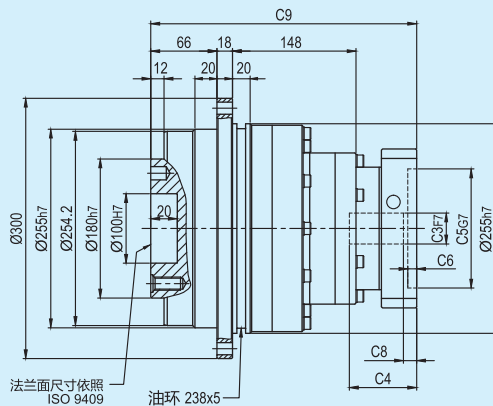
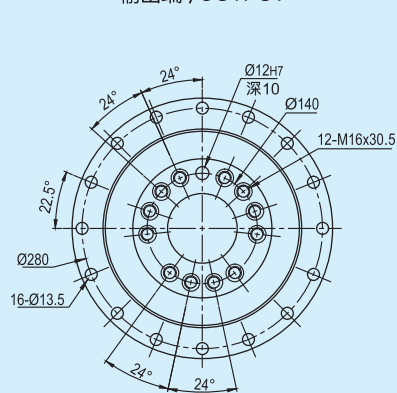


输入端 / INPUT

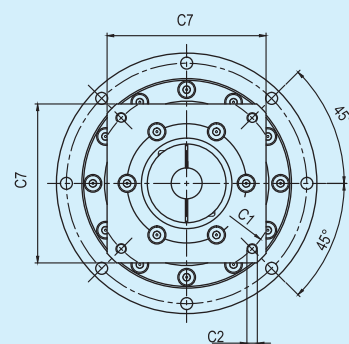


## AD255-L2

输出端 / OUTPUT



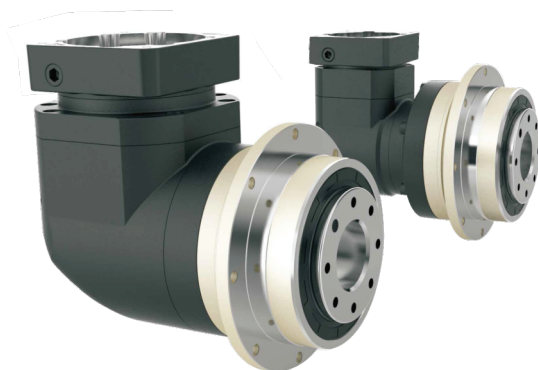
输入端 / INPUT



尺寸	C1	C2	C3	C4	C5	C6	C7	C8	C9
AD255-L1	Ø235	4-M12x28	Ø38, Ø42	116	Ø200	6	220	10	256.5
AD255-L2	Ø200	4-M12x28	Ø35	85	Ø114.3	6	180	10	311.5
	Ø215	4-M12x28	Ø38	85	Ø180	6	190	19	311.5

\* C1~C7是公制标准马达连接板之尺寸,可根据客户要求单独定做。

\* C1~C7are motor(metric standard) specific dimensions, which could be customised.

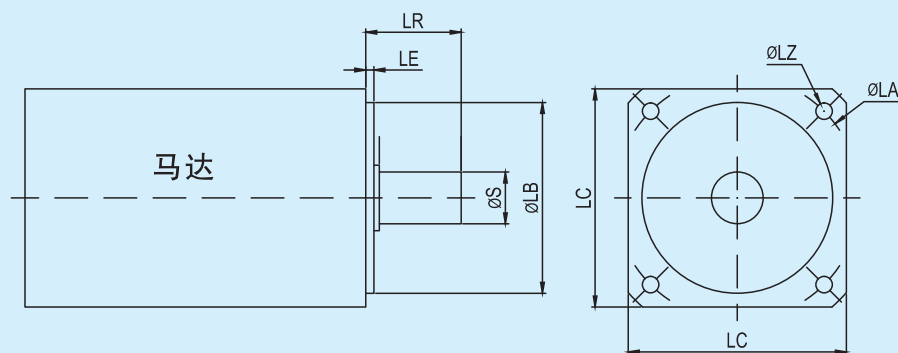
**型号说明 / MODEL ILLUMINATE**

**型号定义 / MODEL ILLUMINATE**

<b>ADR 060</b>	<b>—</b>	<b>10</b>	<b>—</b>	<b>S□</b>	<b>/</b>	<b>马达</b>
减速机型式： ADR047/ADR064/ADR090 ADR110/ADR140/ADR200/ADR255				马达型号： 1-马达制造商及型号 2-马达安装尺寸		
减速比：单级(L1)：4,5,6,7,8,10,14,20 双级(L2)：20,25,35,40,50,60,70,80, 100,120,140,160,200				背隙：S0：超精密背隙 S1：精密背隙 S2：标准背隙		

**选用范例：ADR060-10-S□ MHMD-042G1U**

**型号定义② ADR060-10-S□-50\*3/14\*30/70/M4**

LB\*LE S\*LR LA LZ





## 减速机性能资料/ GEAR BOX PERFORMANCE INFORMATION

规 格		级 数	减 速 比 <sup>1</sup>	ADR047	ADR064	ADR090	ADR110	ADR140	ADR200	ADR255
额定输出力矩T <sub>2N</sub>	Nm	1	4	19	48	130	270	560	1,100	1,700
			5	22	60	160	330	650	1,200	2,000
			6	-	55	150	310	600	-	-
			7	19	50	140	300	550	1,100	1,800
			8	17	48	130	270	560	1,000	1,600
			10	14	60	160	330	650	520	1,220
			14	-	50	140	300	550	1,100	1,800
		定货时备注L1级	20	-	40	100	230	450	520	1,220
		2	20	19	48	130	270	560	1,100	1,700
			25	22	60	160	330	650	1,200	2,000
			35	22	60	160	330	650	1,200	2,000
			40	22	48	130	270	560	1,200	2,000
			50	22	60	160	330	650	1,200	2,000
			60	-	55	150	310	600	-	-
			70	22	60	160	330	650	1,200	2,000
			80	-	48	130	270	560	-	-
			100	22	60	160	330	650	1,200	2,000
			120	-	-	150	310	600	-	-
			140	-	-	140	300	550	1,100	1,800
			160	-	-	120	260	500	-	-
			200	-	-	100	230	450	520	1,220
最大输出力矩T <sub>2B</sub>	Nm		1,2	4~200	3倍额定输出力矩					
额定输入转速n <sub>1</sub>	rpm	1,2	4~200	5,000	5,000	4,000	4,000	3,000	3,000	2,000
最大输入转速n <sub>1B</sub>	rpm	1,2	4~200	10,000	10,000	8,000	8,000	6,000	6,000	4,000
超精密背隙 S0	arcmin	1	4~20	-	-	≤2	≤2	≤2	≤2	≤2
		2	20~200	-	-	≤4	≤4	≤4	≤4	≤4
精密背隙 S1	arcmin	1	4~20	≤4	≤4	≤4	≤4	≤4	≤4	≤4
		2	20~200	≤7	≤7	≤7	≤7	≤7	≤7	≤7
标准背隙 S2	arcmin	1	4~20	≤6	≤6	≤6	≤6	≤6	≤6	≤6
		2	20~200	≤9	≤9	≤9	≤9	≤9	≤9	≤9
扭转刚性		1,2	4~200	7	13	31	82	151	440	1,006
最大弯曲力矩M <sub>2kB</sub> <sup>2</sup>	Nm	1,2	4~200	42.5	125	235	430	1,300	3,064	5,900
容许径向力F <sub>2B</sub> <sup>2</sup>	N	1,2	4~200	1,080	2,110	2,310	4,800	6,200	5,450	10,600
使用寿命	hr	1,2	4~200	20,000*						
效率 η	%	1	4~20	≥95%						
		2	20~200	≥92%						
重量	kg	1	4~20	1.1	2.1	5.9	10.5	21.9	50.9	85.4
		2	20~200	1.4	1.9	4.5	9.8	20.1	45.4	85.9
使用温度	℃	1,2	4~200	-10℃~+90℃						
润滑		1,2	4~200	合成润滑油脂						
防护等级		1,2	4~200	IP65						
安装方向		1,2	4~200	任意方向						
噪音值 ( n <sub>1</sub> =3000rpm )	dB	1,2	4~200	≤61	≤63	≤65	≤68	≤70	≤72	≤74

## 减速机转动惯量

规 格	级 数	减 速 比 <sup>1</sup>	ADR047	ADR064	ADR090	ADR110	ADR140	ADR200	ADR255
转动惯量J <sub>1</sub>	1	4~7	0.09	0.35	2.25	6.84	23.4	68.9	135.4
		8~10	0.09	0.07	1.87	6.25	21.8	65.6	119.8
		14~20	-	0.07	1.87	6.25	21.8	65.6	119.8
	2	20~40	0.09	0.09	0.35	2.25	6.84	23.4	68.9
		50	-	0.09	0.31	1.87	6.25	21.8	65.6
		60	-	0.09	0.35	2.25	6.84	-	-
		70~100	-	0.09	0.31	1.87	6.25	21.8	65.6
		120~200	-	-	0.31	1.87	6.25	21.8	65.6

1.减速比 ( i=N<sub>in</sub>/N<sub>out</sub> )

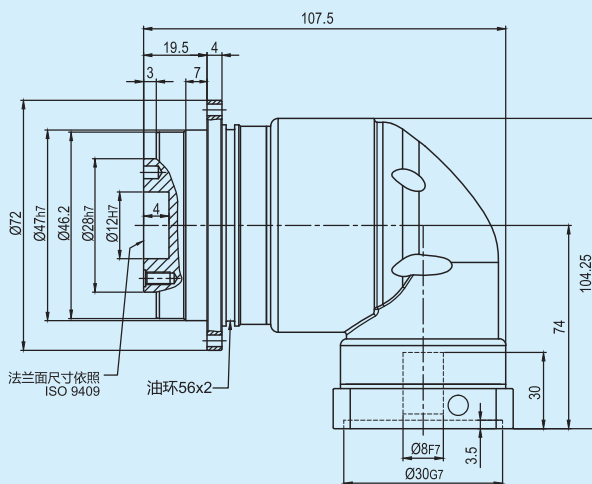
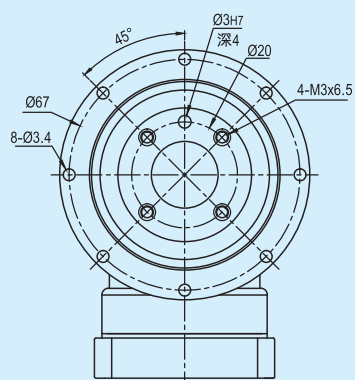
\* 连续运转降低使用寿命二分之一。

2.输出转数 100rpm 时, 作用于输出轴中心位置。

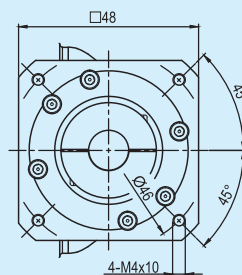
# 外形尺寸图表 / OUTLINE DIMENSION SHEET

## ADR047-L1

输出端 / OUTPUT

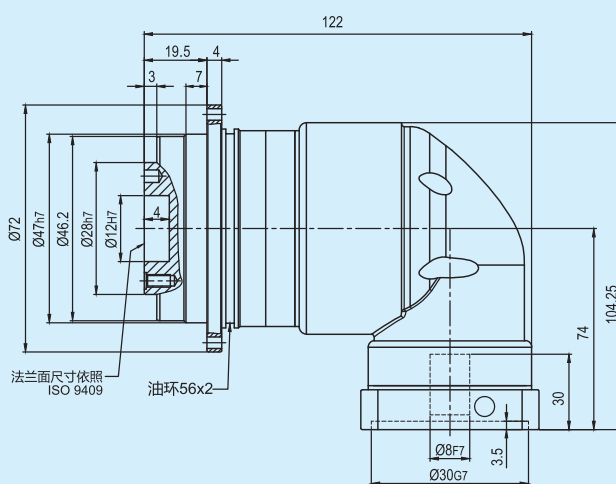
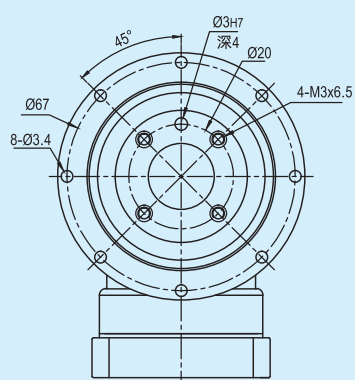


输入端 / INPUT

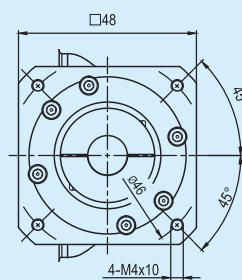


## ADR047-L2

输出端 / OUTPUT



输入端 / INPUT

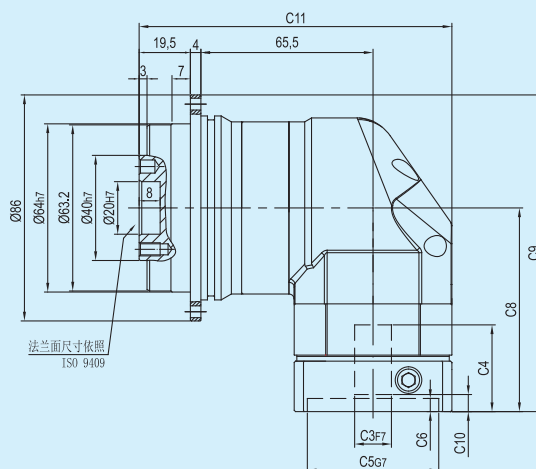
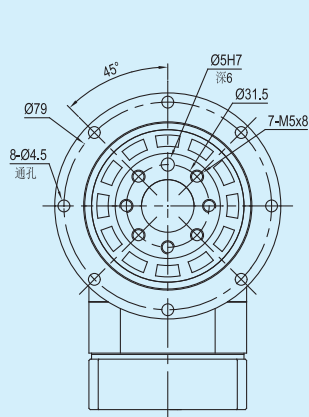


\*输入马达连接板之尺寸,可根据客户要求单独定做。  
\*The input motor specific dimensions could be customised.

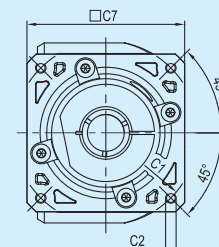
# 外形尺寸图表 / OUTLINE DIMENSION SHEET

## ADR064-L1

输出端/OUTPUT

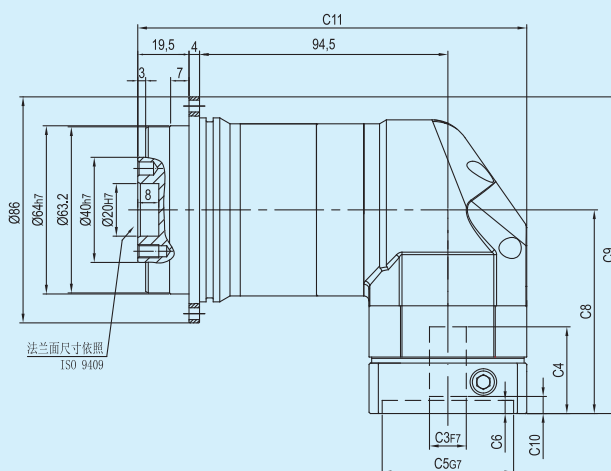
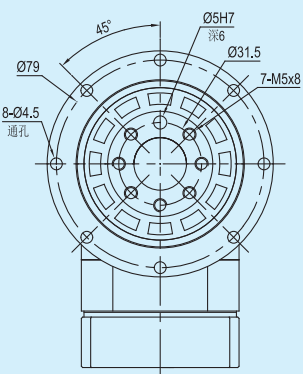


输入端/ INPUT

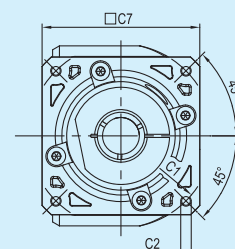


## ADR064-L2

输出端/OUTPUT



输入端/ INPUT

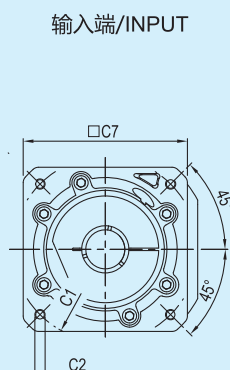
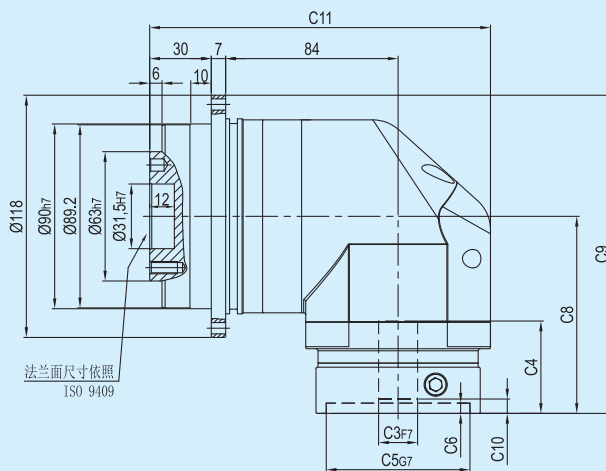


尺寸	C1	C2	C3	C4	C5	C6	C7	C8	C9	C10	C11
ADR064-L1	Ø66.7	4-M4x10	Ø8	33	Ø38.1	5	60	77.5	120.5	5.5	119
ADR064-L2											148
ADR064-L1	Ø70	4-M4x10,4-M5x12	Ø11,Ø14	33	Ø50	5	60	77.5	120.5	5.5	119
ADR064-L2											148
ADR064-L1	Ø90	4-M5x12,4-M6x14	Ø19	42.5	Ø70	6.5	80	87	130	12	129
ADR064-L2											158

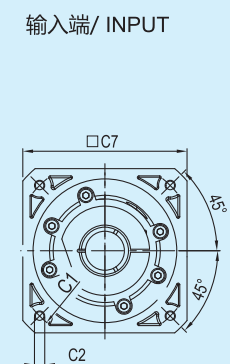
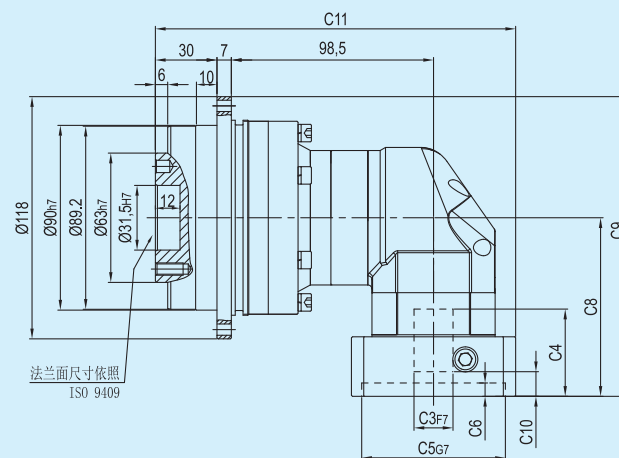
\* C1~C7是公制标准马达连接板之尺寸,可根据客户要求单独定做。

\* C1~C7are motor(metric standard) specific dimensions, which could be customised.

ADR090-L1



ADR090-L2

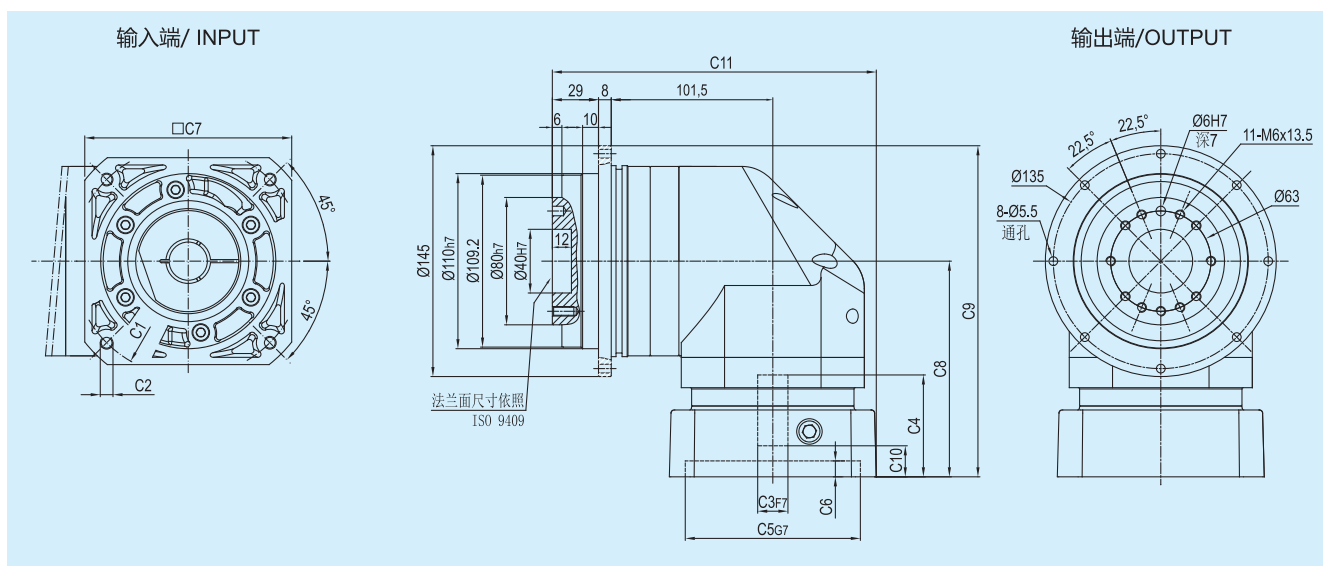


尺寸	C1	C2	C3	C4	C5	C6	C7	C8	C9	C10	C11
ADR090-L1	Ø90	4-M5x12,4-M6x14	Ø19	45	Ø70	6.5	80	96	155	7	166
	Ø100	4-M6x14	Ø16	45	Ø80	6.5	86	96	155	6	166
	Ø115	4-M8x20	Ø19,Ø22	56.5	Ø95	8	100	117.5	176.5	16.5	171
	Ø145	4-M8x20	Ø19,Ø22,Ø24	59	Ø110	11	130	120	179	19	186
ADR090-L2	Ø66.7	4-M4x10	Ø8	33	Ø38.1	5	60	77.5	136.5	5.5	165.5
	Ø70	4-M4x10,4-M5x12	Ø11,Ø14	33	Ø50	5	60	77.5	136.5	5.5	165.5
	Ø90	4-M5x12,4-M6x14	Ø19	42.5	Ø70	6.5	80	87	146	12	175.5
	Ø100	4-M6x14	Ø16	42.5	Ø80	6.5	86	87	146	11	175.5

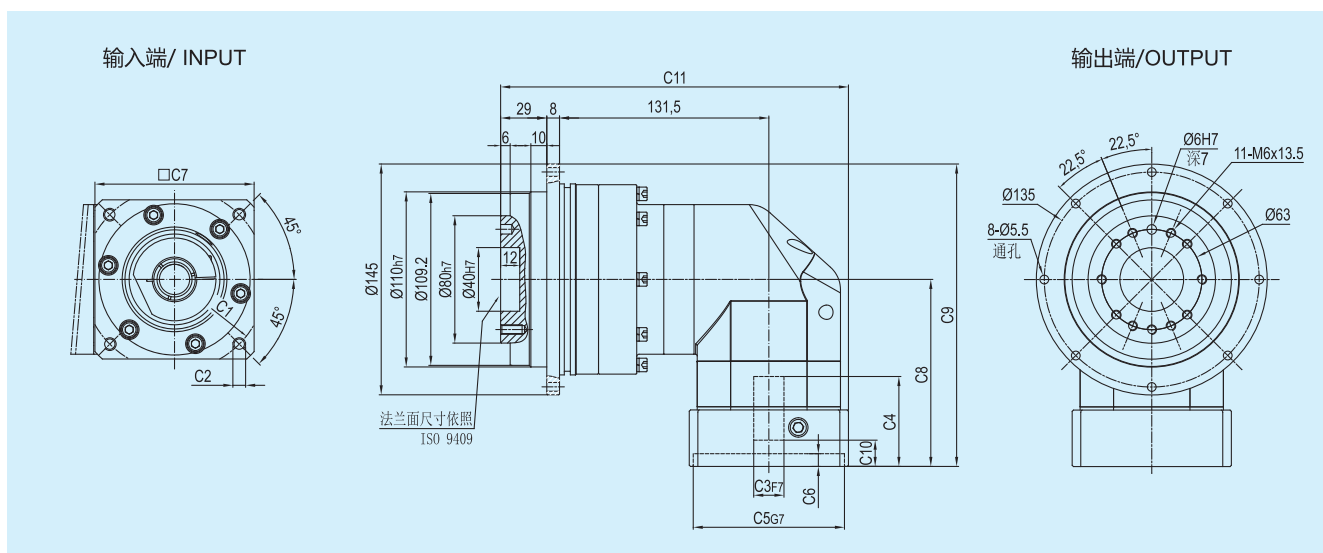
\* C1~C7are motor(metric standard) specific dimensions, which could be customised.

# 外形尺寸图表 / OUTLINE DIMENSION SHEET

## ADR110-L1



## ADR110-L2



尺寸	C1	C2	C3	C4	C5	C6	C7	C8	C9	C10	C11
ADR110-L1	Ø145	4-M8x20	Ø19,Ø22,Ø24	64	Ø110	10	130	135.5	208	19.5	203.5
	Ø200	4-M12x28	Ø35	81	Ø114.3	10	180	152.5	225	28	228.5
ADR110-L2	Ø90	4-M5x12,4-M6x14	Ø19	45	Ø70	6.5	80	96	168.5	7	213.5
	Ø100	4-M6x14	Ø16	45	Ø80	6.5	86	96	168.5	6	213.5
	Ø115	4-M8x20	Ø19,Ø22	56.5	Ø95	8	100	117.5	190	16.5	218.5
	Ø145	4-M8x20	Ø19,Ø22,Ø24	59	Ø110	11	130	120	192.5	19	233.5

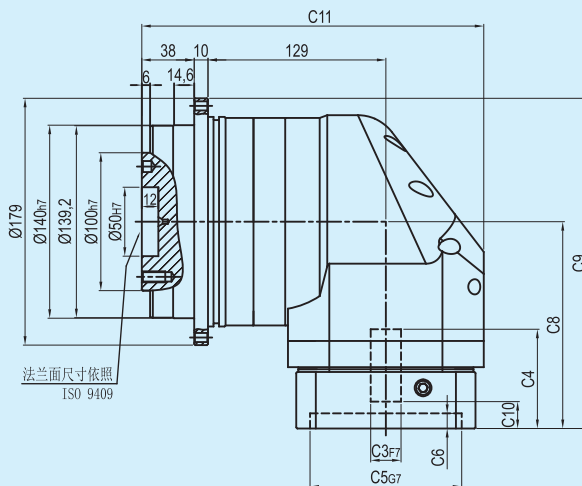
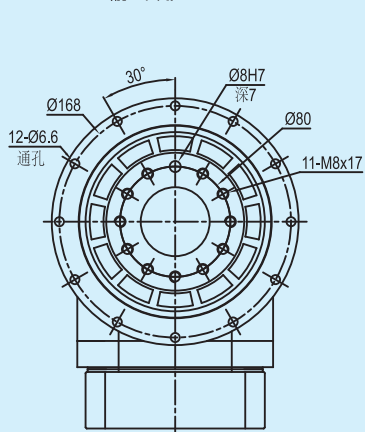
\* C1~C7是公制标准马达连接板之尺寸,可根据客户要求单独定做。

\* C1~C7are motor(metric standard) specific dimensions, which could be customised.

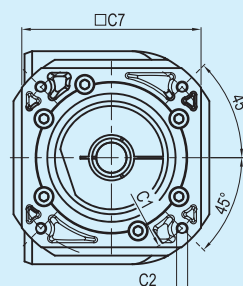
## 外形尺寸图表 / OUTLINE DIMENSION SHEET

### ADR140-L1

输出端 / OUTPUT

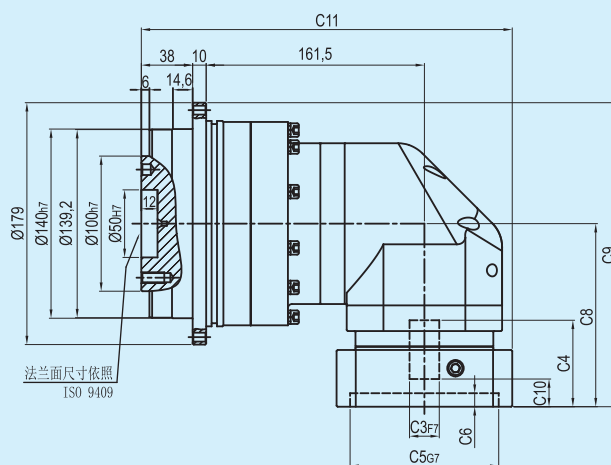
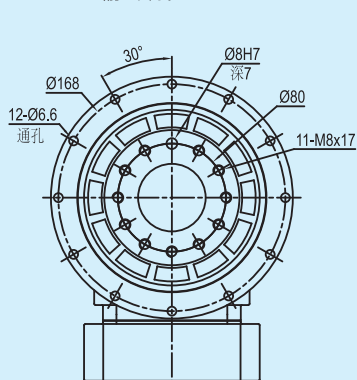


输入端 / INPUT

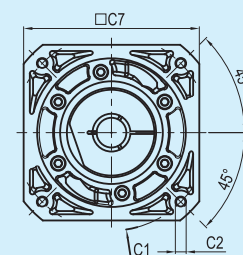


### ADR140-L2

输出端 / OUTPUT



输入端 / INPUT



尺寸	C1	C2	C3	C4	C5	C6	C7	C8	C9	C10	C11
ADR140-L1	Ø145	4-M8x20	Ø22, Ø24	72	Ø110	11	130	150	239.5	19.5	248
	Ø200	4-M12x28	Ø35	82	Ø114.3	8	180	160	249.5	25	267
ADR140-L2	Ø145	4-M8x20	Ø19, Ø22, Ø24	64	Ø110	10	130	135.5	225	19.5	274.5
	Ø200	4-M12x28	Ø35	81	Ø114.3	10	180	152.5	242	28	299.5

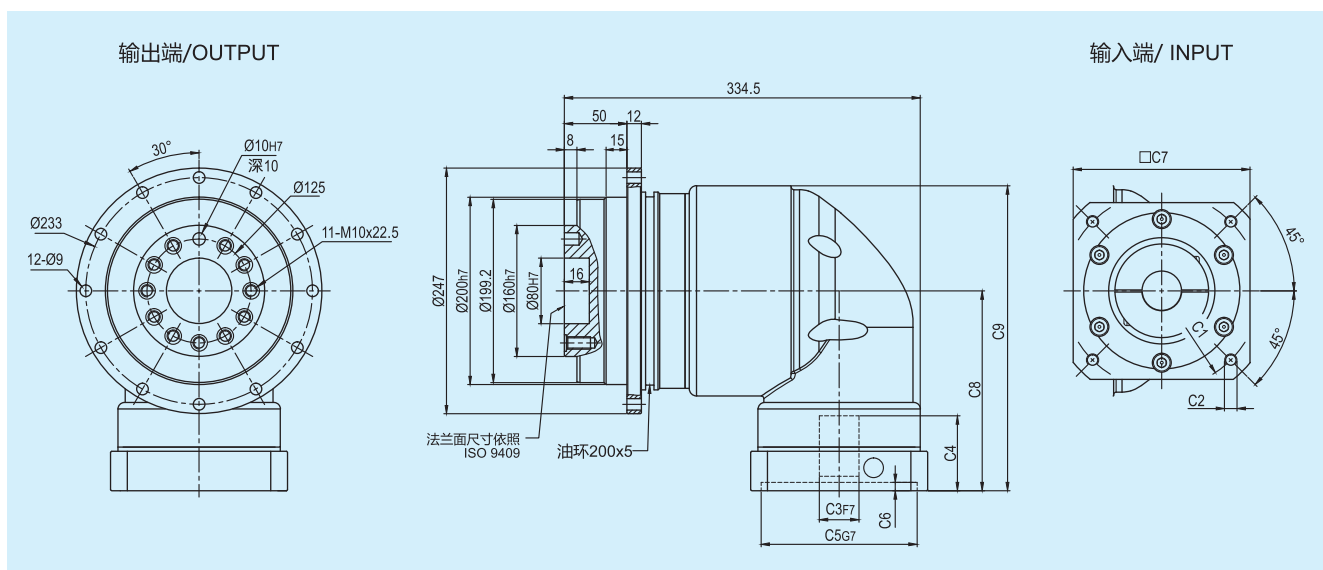
\* C1~C7是公制标准马达连接板之尺寸,可根据客户要求单独定做。

\* C1~C7are motor(metric standard) specific dimensions, which could be customised.

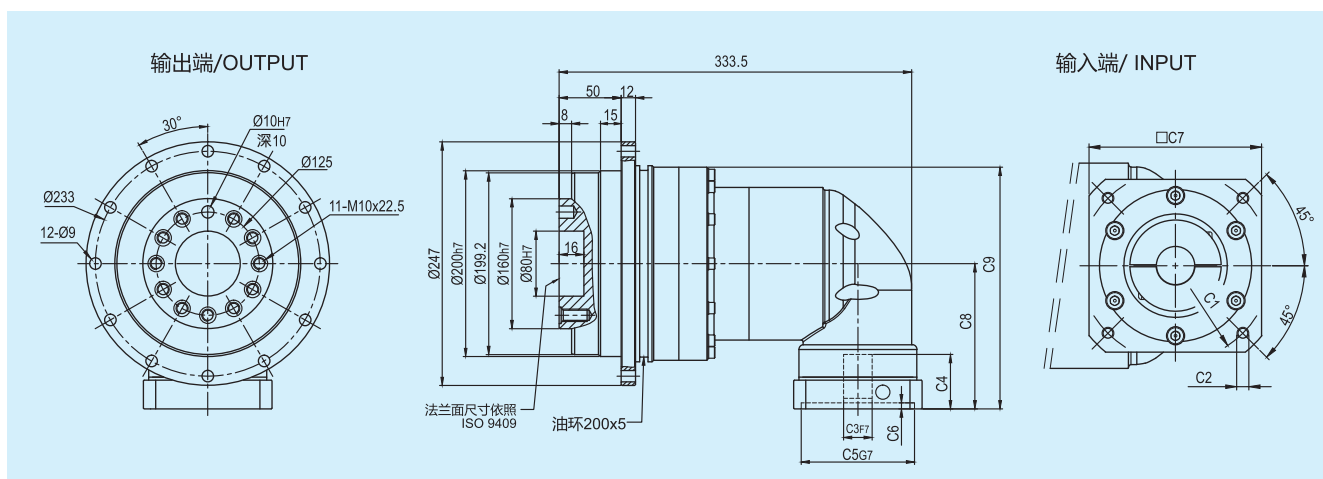


# 外形尺寸图表 / OUTLINE DIMENSION SHEET

## ADR200-L1



## ADR200-L2



尺寸	C1	C2	C3	C4	C5	C6	C7	C8	C9
ADR200-L1	$\varnothing 200$	4-M12x28	$\varnothing 35$	85	$\varnothing 114.3$	6	180	213.5	316
	$\varnothing 215$	4-M12x28	$\varnothing 38$	85	$\varnothing 180$	6	190	213.5	316
ADR200-L2	$\varnothing 165$	4-M10x25	$\varnothing 28$	60	$\varnothing 130$	6	142	164.5	269.5
	$\varnothing 200$	4-M12x28	$\varnothing 35$	85	$\varnothing 114.3$	6	180	189.5	294.5

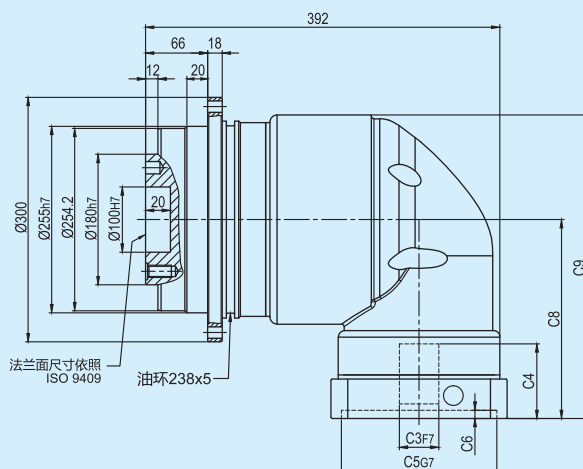
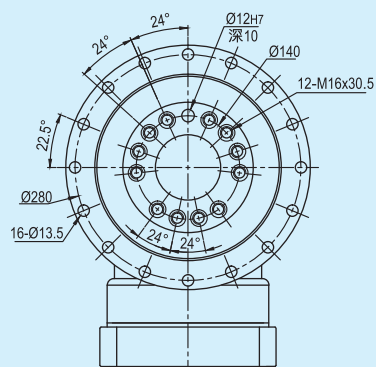
\* C1~C7是公制标准马达连接板之尺寸,可根据客户要求单独定做。

\* C1~C7are motor(metric standard) specific dimensions, which could be customised.

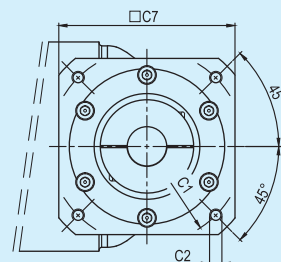
# 外形尺寸图表 / OUTLINE DIMENSION SHEET

## ADR255-L1

输出端 / OUTPUT

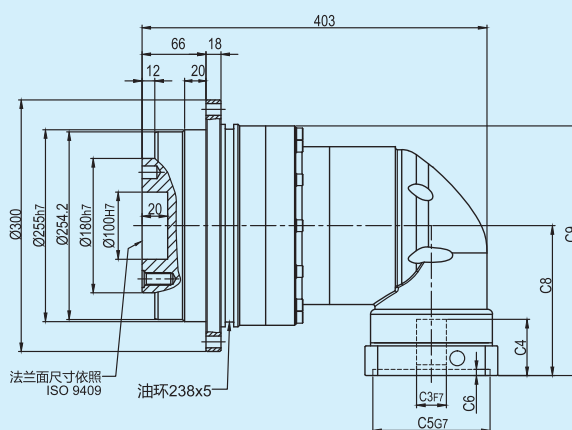
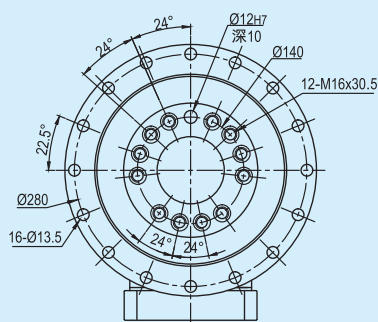


输入端 / INPUT

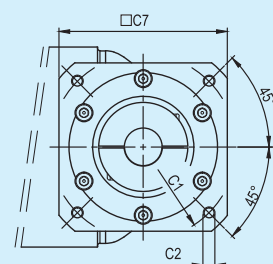


## ADR255-L2

输出端 / OUTPUT



输入端 / INPUT



尺寸	C1	C2	C3	C4	C5	C6	C7	C8	C9
ADR255-L1	Ø235	4-M12x28	Ø38, Ø42	116	Ø200	6	220	268.5	398.5
ADR255-L2	Ø200	4-M12x28	Ø35	85	Ø114.3	6	180	213.5	340
	Ø215	4-M12x28	Ø38	85	Ø180	6	190	213.5	340

\* C1~C7是公制标准马达连接板之尺寸,可根据客户要求单独定做。

\* C1~C7are motor(metric standard) specific dimensions, which could be customised.