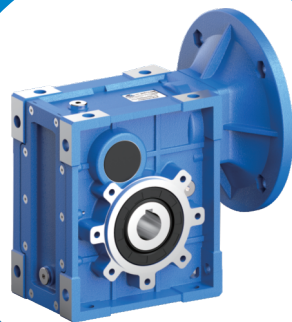
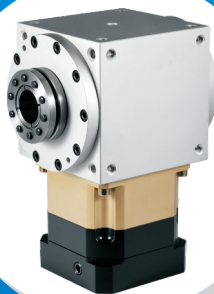
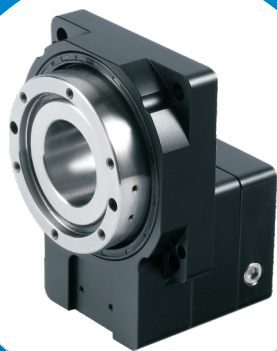




新立盈®

致力为客户创造最大价值





新立盈公司自2010年成立以来，立足于全球工业自动化领域，聚集行业资深团队自主研发，生产，销售行星减速机，中空减速机、蜗轮蜗杆减速机，谐波减速机，RV减速机等传动装置。所生产的精密型减速机可搭配任意伺服马达，步进马达。具有超低背隙(1~3arcmin)精度等级，低噪声(60dAB),高效率(>95%)三大特性。产品广泛应用于工具机床，激光雕刻机，全伺服纸巾机械，精度凹凸版印刷机，精密涂布机，伺服弯管机，数控弹簧机等自动化程度较高设备。立志通过优良产品协同伺服电机厂家及系统集成贸易商服务国内自动化行业。

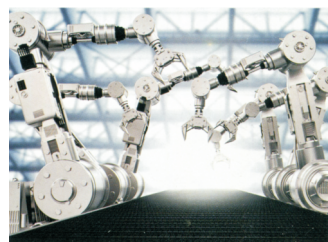
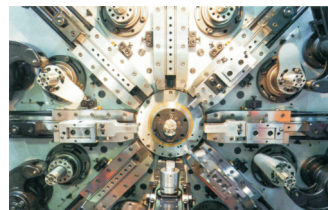
我们的优势

响应迅速

交期快速

服务高效

应用行业



目录索引

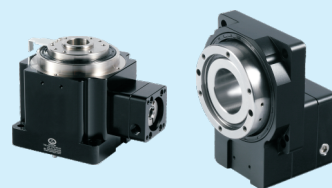
高精度斜齿
AB/AE

P: 1-16



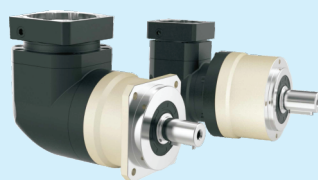
中空旋转平台

P: 119-146



高精度斜齿
ABR/AER

P: 17-29



迷你转向器

P: 147-160



高精度斜齿
AEP/AEPR

P: 30-53



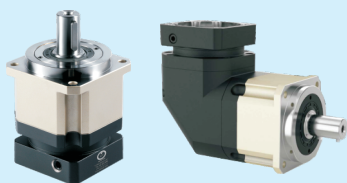
T型减速机

P: 161-186



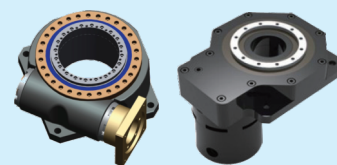
超高精密斜齿
GAB/GABR

P: 54-73



重载平台

P: 187-197



超高精密斜齿
AD/ADR系列

P: 74-91



摆线针轮减速器

P: 198-214



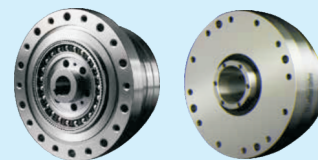
精密行星
ESP/ESPZ

P: 92-107



谐波减速机

P: 215-245



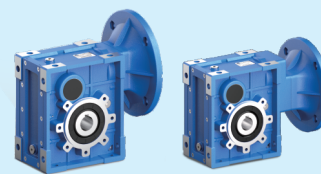
精密孔输出
PTK/WPTK

P: 108-118

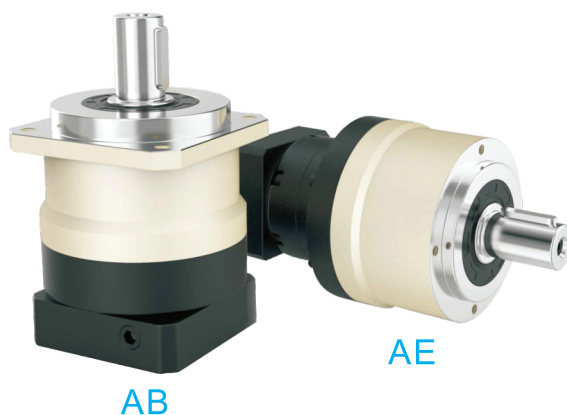


斜齿-准双曲面
齿轮减速机

P: 247-256



型号说明 / MODEL ILLUMINATE



型号定义 / MODEL ILLUMINATE

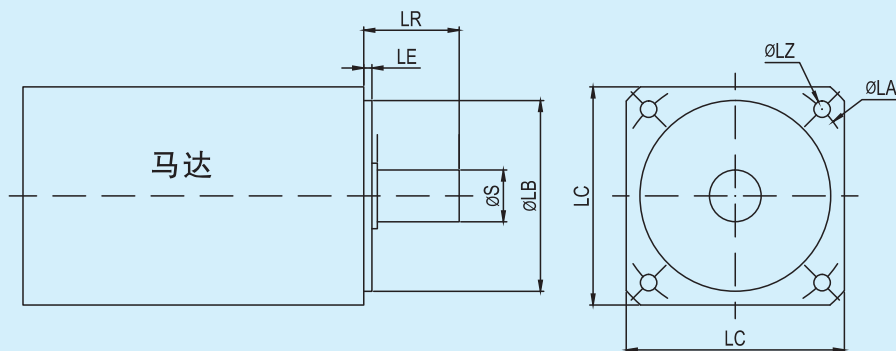
选型注意事项请参照257页

AB060	—	10	—	S□	/	马达
减速机型式： AB042/AB060/AB090/AB115/AB142 AB180/AB220 AE070/AE090/AE120/AE155/AE205 AE235			马达型号： 1-马达制造商及型号 2-马达安装尺寸			
减速比：单级(L1)：3,4,5,6,7,8,10 双级(L2)：12,15,20,25,30,35,40,50,60,70,80,100			背隙：S2：标准背隙			

选用范例：AB060-10-S□ MHMD-042G1U

型号定义② AB060-10-S□-50*3/14*30/70/M4

LB*LE S*LR LA LZ





减速机性能资料 / GEAR BOX PERFORMANCE INFORMATION

规 格	级 数	减速比 ¹	AB042	AB060 AE070	AB090 AE090	AB115 AE120	AB142 AE155	AB180 AE205	AB220 AE235
额定输出力矩T _{2N}	1	3	20	55	130	208	342	588	1,140
		4	19	50	140	290	542	1,050	1,700
		5	22	60	160	330	650	1,200	2,000
		6	20	55	150	310	600	-	-
		7	19	50	140	300	550	1,100	1,800
		8	17	45	120	260	500	1,000	1,600
		10	14	40	100	230	450	520	1,220
	2	12	20	55	130	208	342	-	-
		15	20	55	130	208	342	588	1,140
		20	19	50	140	290	542	1,050	1,700
		25	22	60	160	330	650	1,200	2,000
		30	22	50	130	208	342	1,200	2,000
		35	22	60	160	330	650	1,200	2,000
		40	22	50	140	290	542	1,200	2,000
		50	22	60	160	330	650	1,200	2,000
		60	20	55	150	310	600	-	-
		70	19	50	140	300	550	1,100	1,800
		80	17	45	120	260	500	1,000	1,600
		100	14	40	100	230	450	520	1,220
最大输出力矩T _{2B}	Nm	1,2	3~100	3倍额定输出力矩					
额定输入转速n ₁	rpm	1,2	3~100	5,000	5,000	4,000	4,000	3,000	2,000
最大输入转速n _{1B}	rpm	1,2	3~100	10,000	10,000	8,000	8,000	6,000	4,000
背隙 S1	arcmin	1	3~10	≤5	≤5	≤5	≤5	≤5	≤5
		2	12~100	≤7	≤7	≤7	≤7	≤7	≤7
背隙 S2	arcmin	1	3~10	≤7	≤7	≤7	≤7	≤7	≤7
		2	12~100	≤8	≤8	≤8	≤8	≤8	≤8
扭转刚性	Nm/arcmin	1,2	3~100	3	7	14	25	50	145
容许径向力F _{2B} ²	N	1,2	3~100	780	1,530	3,250	6,700	9,400	14,500
容许轴向力F _{2a1B} ²	N	1,2	3~100	350	630	1,300	3,000	4,000	6,200
容许轴向力F _{2a2B} ²	N	1,2	3~100	390	765	1,625	3,350	4,700	7,250
使用寿命	hr	1,2	3~100	20,000*					
效率 η	%	1	3~10	≥97%					
		2	12~100	≥94%					
重量	kg	1	3~10	0.5	1.3	3.7	7.8	14.5	29
		2	12~100	0.8	1.9	4.1	9	17.5	33
使用温度	°C	1,2	3~100	-10°C~+90°C					
润滑		1,2	3~100	合成润滑油脂					
防护等级		1,2	3~100	IP65					
安装方向		1,2	3~100	任意方向					
噪音值 (n ₁ =3000rpm)	dB	1,2	3~100	≤56	≤58	≤60	≤63	≤65	≤67

减速机转动惯量

规 格	级 数	减速比 ¹	AB042	AB060 AE070	AB090 AE090	AB115 AE120	AB142 AE155	AB180 AE205	AB220 AE235
转动惯量J ₁	1	3	0.03	0.16	0.61	3.25	9.21	28.98	69.61
		4	0.03	0.14	0.48	2.74	7.54	23.67	54.37
		5	0.03	0.13	0.47	2.71	7.42	23.29	53.27
		6	0.03	0.13	0.45	2.65	7.25	22.75	51.72
		7	0.03	0.13	0.45	2.62	7.14	22.48	50.97
		8	0.03	0.13	0.44	2.58	7.07	22.59	50.84
		10	0.03	0.13	0.44	2.57	7.03	22.51	50.56
	2	12	0.03	0.03	0.13	0.47	2.71	7.42	23.29
		15	0.03	0.03	0.13	0.47	2.71	7.42	23.29
		20	0.03	0.03	0.13	0.47	2.71	7.42	23.29
		25	0.03	0.03	0.13	0.47	2.71	7.42	23.29
		30	0.03	0.03	0.13	0.47	2.71	7.42	23.29
		35	0.03	0.03	0.13	0.47	2.71	7.42	23.29
		40	0.03	0.03	0.13	0.47	2.71	7.42	23.29
		50	0.03	0.03	0.13	0.44	2.57	7.03	22.51
		60	0.03	0.03	0.13	0.44	2.57	7.03	22.51
		70	0.03	0.03	0.13	0.44	2.57	7.03	22.51
		80	0.03	0.03	0.13	0.44	2.57	7.03	22.51
		100	0.03	0.03	0.13	0.44	2.57	7.03	22.51

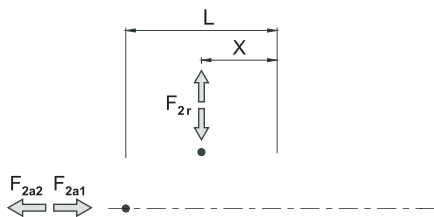
1. 减速比 (i=N_{in}/N_{out})

* 连续运转降低使用寿命二分之一。

2. 输出转速 100rpm 时, 作用于输出轴中心位置。

减速机输出轴之容许径向力及轴向力

REDUCER OUTPUT SHAFT OF THE PERMISSIBLE RADIAL FORCE AND SHAFT AND FORCE

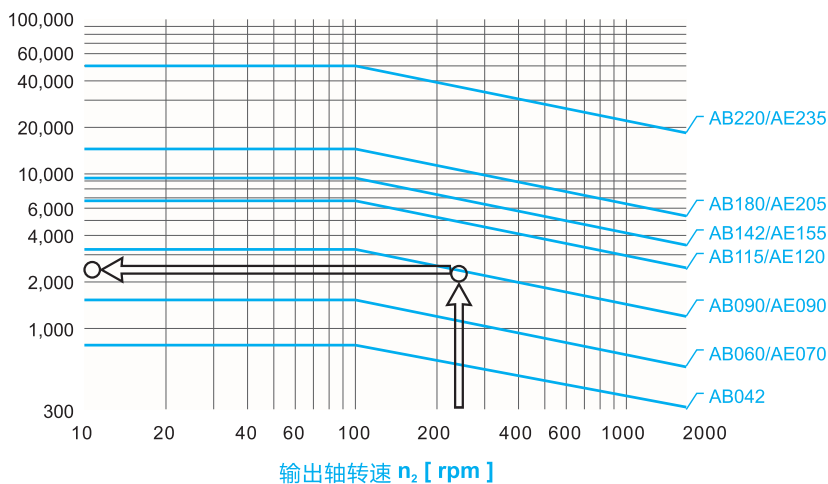


减速机输出轴所能承受之最大径向力及轴向力,端视内部支撑轴承之设计,减速机采用大尺寸的轴承及较大跨距的设计,其能承受更大的径向及轴向负荷。

F_{2r} 径向力

F_{2a} 轴向力

容许径向力 F_{2rB} [N] 施力于轴中心位置

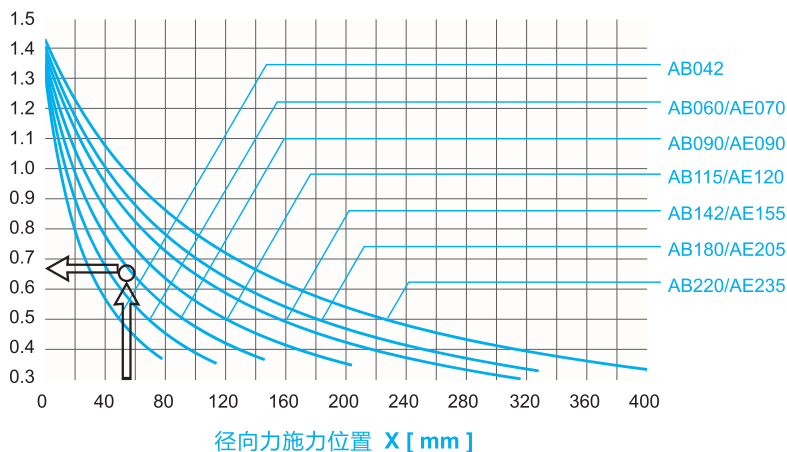


当径向力 F_{2r} 施力于轴中心位置即 $X = 1/2 \times L$ 时,不同规格之减速机在不同输出转速运用下使用寿命为 20,000hr* 时,所能承受之容许径向力 F_{2rB} ,请参照左图,而能承受之容许轴向力 F_{2aB} ,为

$$F_{2a1B} = 0.2 \times F_{2rB}$$

$$F_{2a2B} = 0.1 \times F_{2rB}$$

位置符合系数 K_b



当径向力 F_{2r} 施力不在轴中心位置时,越靠近减速机即 $X < 1/2 \times L$,所能承受之容许径向力变大,越远离减速机即 $X > 1/2 \times L$ 时,所能承受之容许径向力则变小,藉由左图,依减速机规格及径向力施力位置 X ,查出位置负荷系数 K_b ,在代入下列公式,求出容许径向力:

$$F'_{2rB} = K_b \times F_{2rB}$$

轴向力:

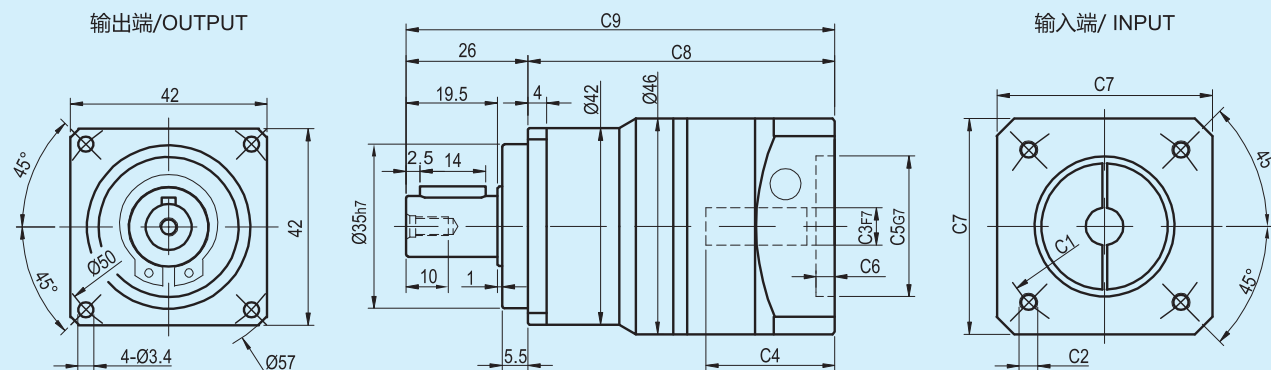
$$F'_{2a1B} = 0.2 \times F'_{2rB}$$

$$F'_{2a2B} = 0.1 \times F'_{2rB}$$

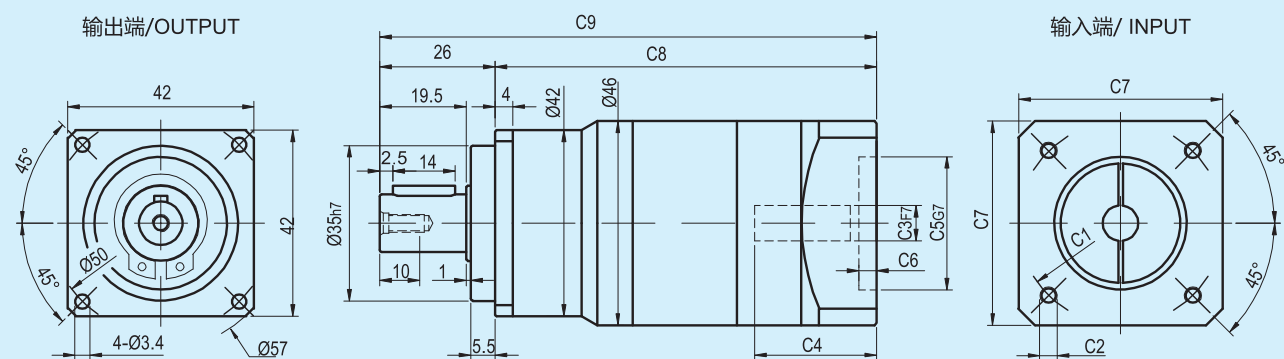
* 连续运转降低使用寿命二分之一。

外形尺寸图表 / OUTLINE DIMENSION SHEET

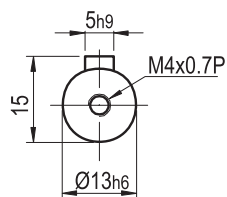
AB042-L1



AB042-L2



输出轴径/Output Diameter



轴型式

尺寸	C1	C2	C3	C4	C5	C6	C7	C8	C9
AB042-L1	Ø45	4-M3x8	Ø8	27.5	Ø30	5	46	65.5	91.5
	Ø46	4-M4x10	Ø8	27.5	Ø30	5	46	65.5	91.5
	Ø66.67	4-M4x10	Ø6.35,Ø8	27.5	Ø38.1	5	57	65.5	91.5
	Ø70	4-M4x10,4-M5x12	Ø11	32	Ø50	5	60	70	96
AB042-L2	Ø45	4-M3x8	Ø8	27.5	Ø30	5	46	86	112
	Ø46	4-M4x10	Ø8	27.5	Ø30	5	46	86	112
	Ø66.67	4-M4x10	Ø6.35,Ø8	27.5	Ø38.1	5	57	86	112

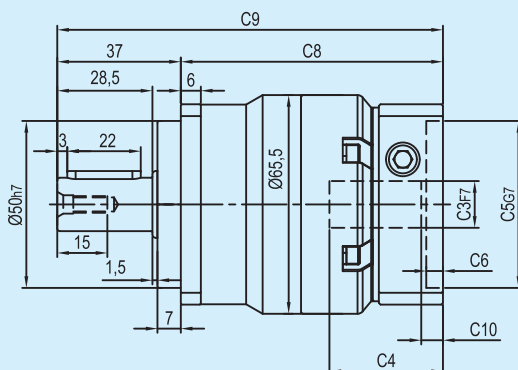
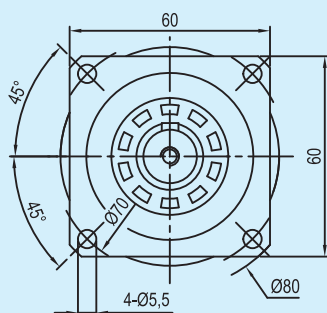
* C1~C7是公制标准马达连接板之尺寸,可根据客户要求单独定做。

* C1~C7are motor(metric standard) specific dimensions, which could be customised.

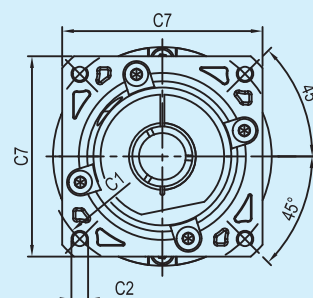
外形尺寸图表 / OUTLINE DIMENSION SHEET

AB060-L1

输出端/ OUTPUT

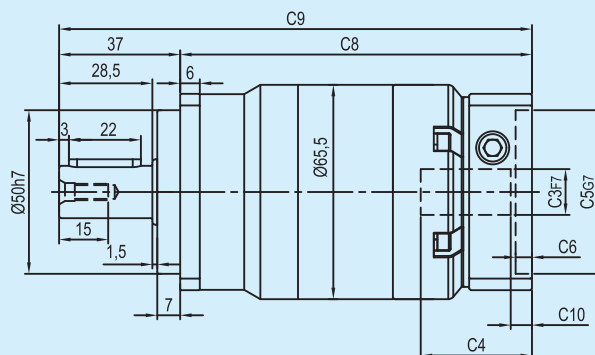
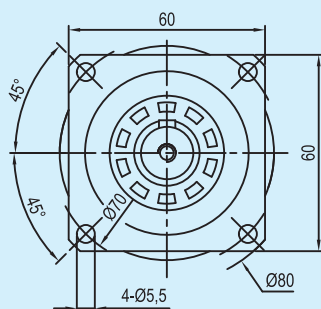


输入端/INPUT

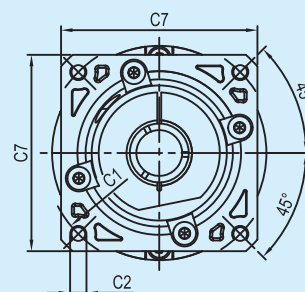


AB060-L2

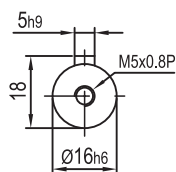
输出端 /OUTPUT



输入端/ INPUT



输出轴径/Output Diameter



轴型式

尺寸	C1	C2	C3	C4	C5	C6	C7	C8	C9	C10
AB060-L1	Ø66.7	4-M4x10	Ø8	34	Ø38.1	5	60	78.5	115.5	5.5
AB060-L2								107.5	144.5	5.5
AB060-L1	Ø70	4-M4x10, 4-M5x12	Ø11, Ø14	34	Ø50	5	60	78.5	115.5	5.5
AB060-L2								107.5	144.5	5.5
AB060-L1	Ø90	4-M5x12, 4-M6x14	Ø19	42	Ø70	6.5	80	85	122	12
AB060-L2								114	151	12

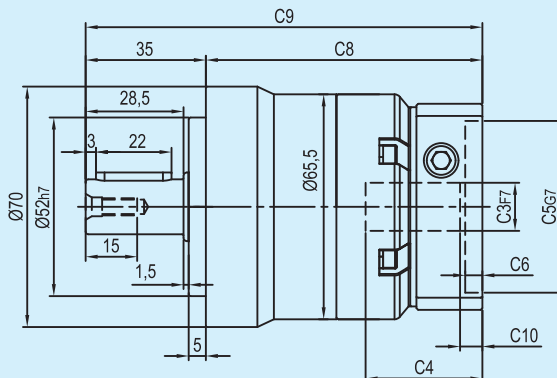
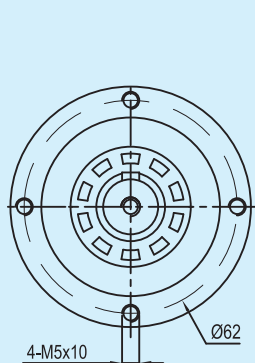
* C1~C7是公制标准马达连接板之尺寸, 可根据客户要求单独定做。

* C1~C7 are motor (metric standard) specific dimensions, which could be customised.

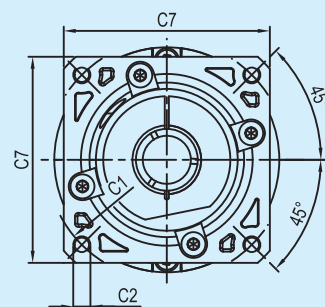
外形尺寸图表 / OUTLINE DIMENSION SHEET

AE070-L1

输出端 / OUTPUT

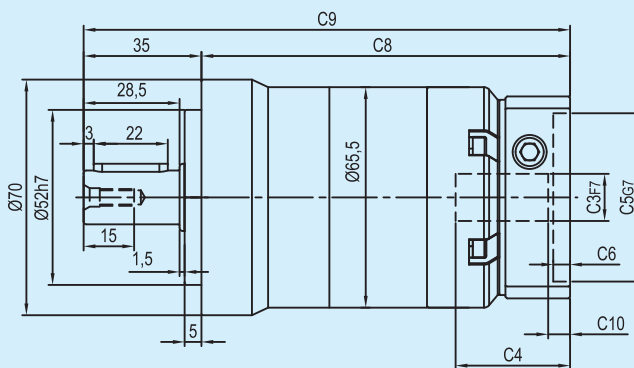
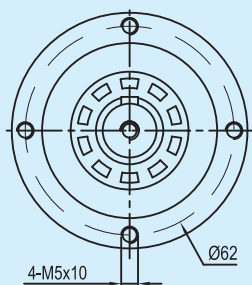


输入端 / INPUT

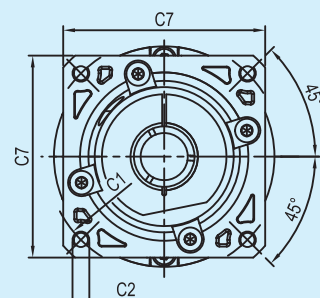


AE070-L2

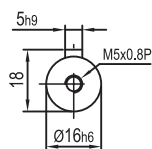
输出端 / OUTPUT



输入端 / INPUT



输出轴径/Output Diameter



轴型式

尺寸	C1	C2	C3	C4	C5	C6	C7	C8	C9	C10
AE070-L1	Ø66.7	4-M4x10	Ø8	34	Ø38.1	5	60	80.5	115.5	5.5
AE070-L2	Ø70	4-M4x10, 4-M5x12	Ø11, Ø14	34	Ø50	5	60	109.5	144.5	5.5
AE070-L1	Ø90	4-M5x12, 4-M6x14	Ø19	42	Ø70	6.5	80	87	122	12
AE070-L2								116	151	12

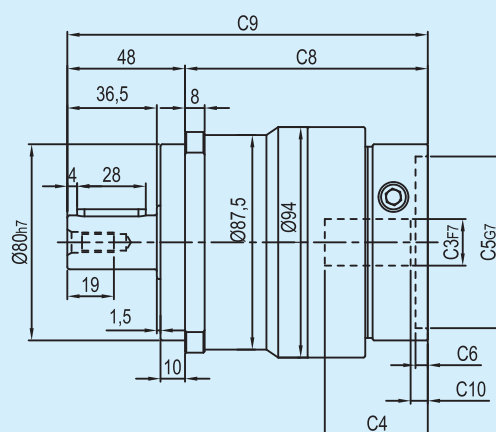
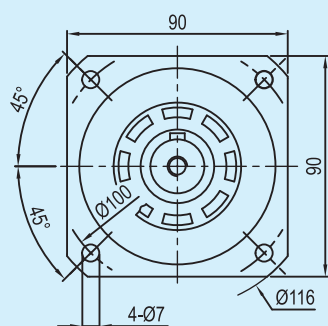
* C1~C7是公制标准马达连接板之尺寸,可根据客户要求单独定做。

* C1~C7are motor(metric standard) specific dimensions, which could be customised.

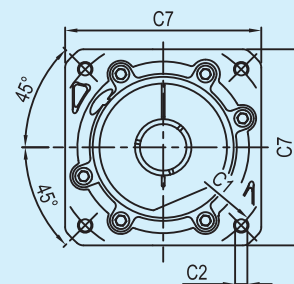
外形尺寸图表 / OUTLINE DIMENSION SHEET

AB090-L1

输出端/OUTPUT

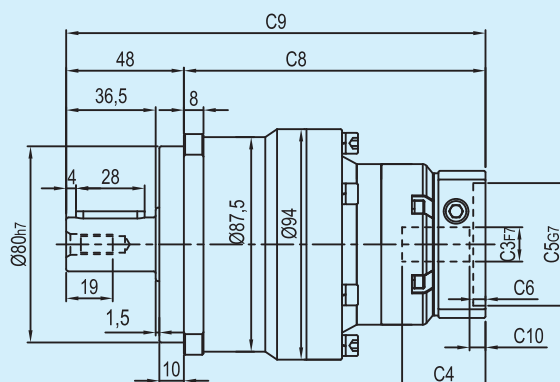
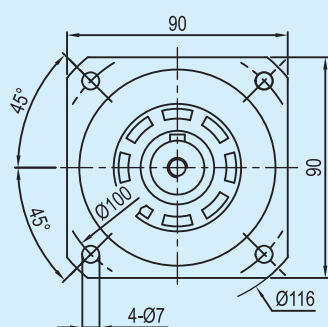


输入端/ INPUT

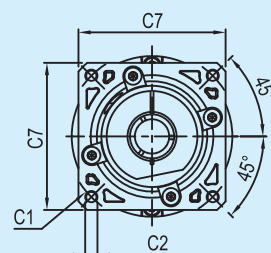


AB090-L2

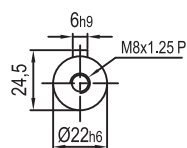
输出端/OUTPUT



输入端/ INPUT



输出轴径/Output Diameter



轴型式

尺寸	C1	C2	C3	C4	C5	C6	C7	C8	C9	C10
AB090-L1	Ø90	4-M5x12, 4-M6x14	Ø19	42	Ø70	6.5	80	99	147	7
	Ø100	4-M6x14	Ø16	42	Ø80	6.5	86	99	147	6
AB090-L1	Ø115	4-M8x20	Ø19, Ø22	56.5	Ø95	8	100	114.5	162.5	16.5
	Ø145	4-M8x20	Ø19, Ø22, Ø24	59	Ø110	11	130	117	165	19
AB090-L2	Ø66.7	4-M4x10	Ø8	34	Ø38.1	5	60	123	171	5.5
	Ø70	4-M4x10, 4-M5x12	Ø11, Ø14	34	Ø50	5	60	123	171	5.5
AB090-L2	Ø90	4-M5x12, 4-M6x14	Ø19	42	Ø70	6.5	80	129.5	177.5	12
	Ø100	4-M6x14	Ø16	42	Ø80	6.5	86	129.5	177.5	11

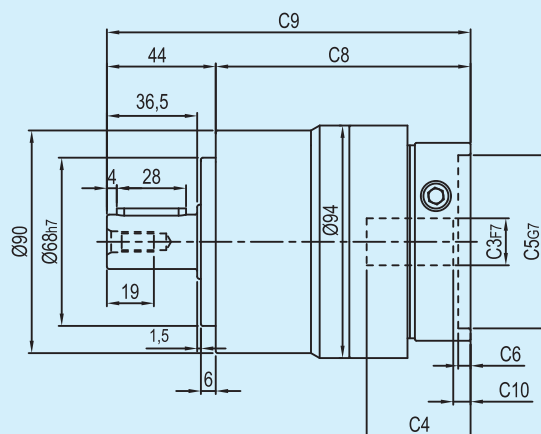
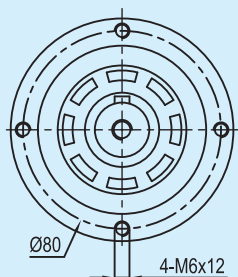
* C1~C7是公制标准马达连接板之尺寸,可根据客户要求单独定做。

* C1~C7are motor(metric standard) specific dimensions, which could be customised.

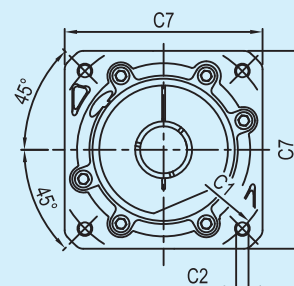
外形尺寸图表 / OUTLINE DIMENSION SHEET

AE090-L1

输出端 / OUTPUT

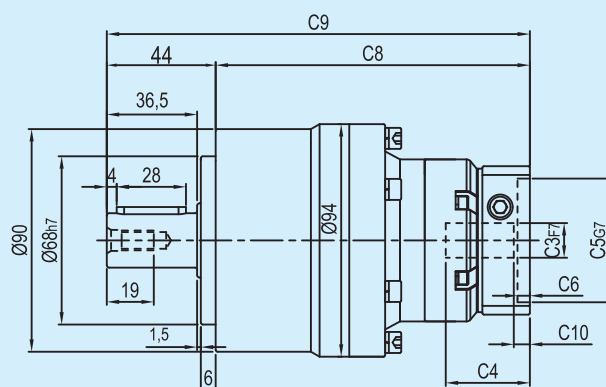
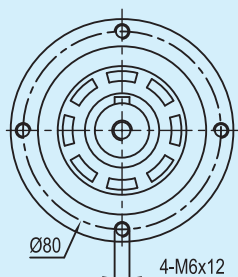


输入端 / INPUT

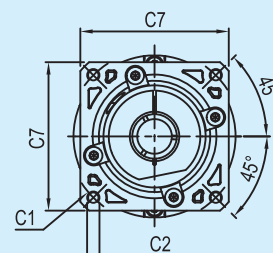


AE090-L2

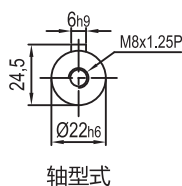
输出端 / OUTPUT



输入端 / INPUT



输出轴径/Output Diameter



轴型式

尺寸	C1	C2	C3	C4	C5	C6	C7	C8	C9	C10
AE090-L1	Ø90	4-M5x12, 4-M6x14	Ø19	42	Ø70	6.5	80	103	147	7
	Ø100	4-M6x14	Ø16	42	Ø80	6.5	86	103	147	6
AE090-L1	Ø115	4-M8x20	Ø19, Ø22	56.5	Ø95	8	100	118.5	162.5	16.5
	Ø145	4-M8x20	Ø19, Ø22, Ø24	59	Ø110	11	130	121	165	19
AE090-L2	Ø66.7	4-M4x10	Ø8	34	Ø38.1	5	60	127	171	5.5
	Ø70	4-M4x10, 4-M5x12	Ø11, Ø14	34	Ø50	5	60	127	171	5.5
AE090-L2	Ø90	4-M5x12, 4-M6x14	Ø19	42	Ø70	6.5	80	133.5	177.5	12
	Ø100	4-M6x14	Ø16	42	Ø80	6.5	86	133.5	177.5	11

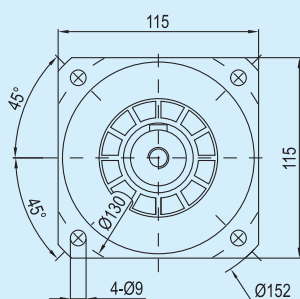
* C1~C7是公制标准马达连接板之尺寸,可根据客户要求单独定做。

* C1~C7are motor(metric standard) specific dimensions, which could be customised.

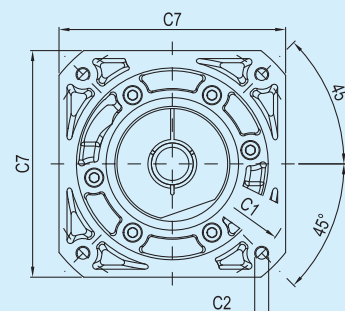
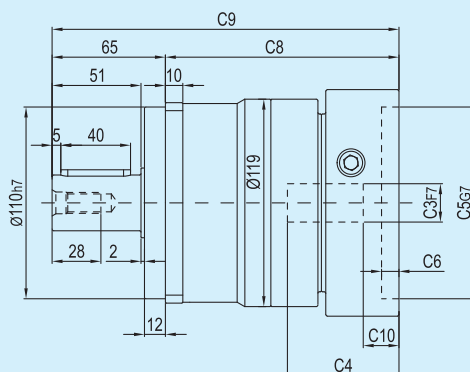
外形尺寸图表 / OUTLINE DIMENSION SHEET

AB115-L1

输出端 / OUTPUT

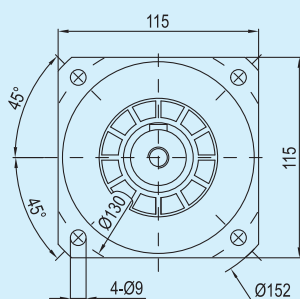


输入端 / INPUT

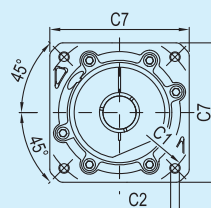
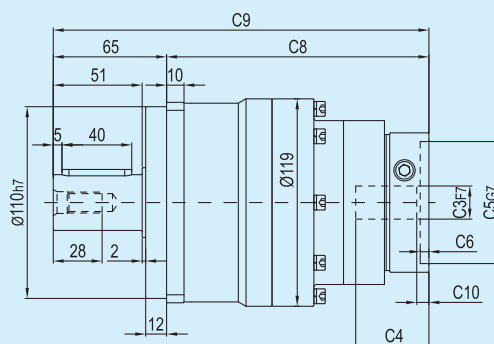


AB115-L2

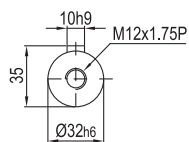
输出端 / OUTPUT



输入端 / INPUT



输出轴径 / Output Diameter



轴型式

尺寸	C1	C2	C3	C4	C5	C6	C7	C8	C9	C10
AB115-L1	Ø145	4-M8x20	Ø19, Ø22, Ø24	64	Ø110	10	130	134	199	19.5
AB115-L1	Ø200	4-M12x28	Ø35	81	Ø114.3	10	180	151.5	216.5	28
AB115-L2	Ø90	4-M5x12, 4-M6x14	Ø19	42	Ø70	6.5	80	150.5	215.5	7
	Ø100	4-M6x14	Ø16	42	Ø80	6.5	86	150.5	215.5	6
AB115-L2	Ø115	4-M8x20	Ø19, Ø22	56.5	Ø95	8	100	166	231	16.5
	Ø145	4-M8x20	Ø19, Ø22, Ø24	59	Ø110	11	130	168.5	233.5	19

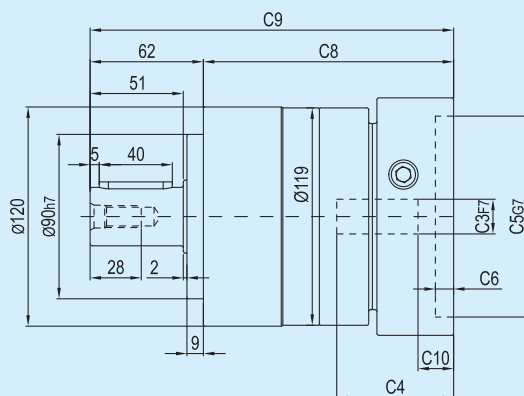
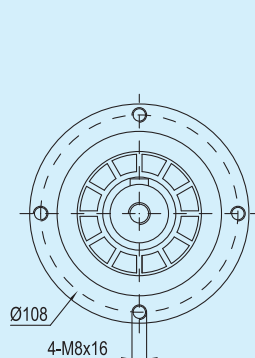
* C1~C7是公制标准马达连接板之尺寸,可根据客户要求单独定做。

* C1~C7are motor(metric standard) specific dimensions, which could be customised.

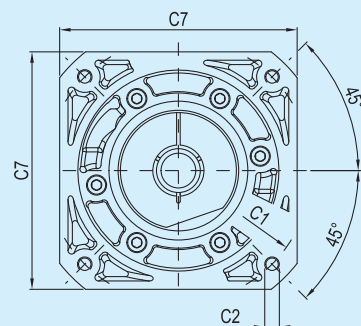
外形尺寸图表 / OUTLINE DIMENSION SHEET

AE120-L1

输出端 / OUTPUT

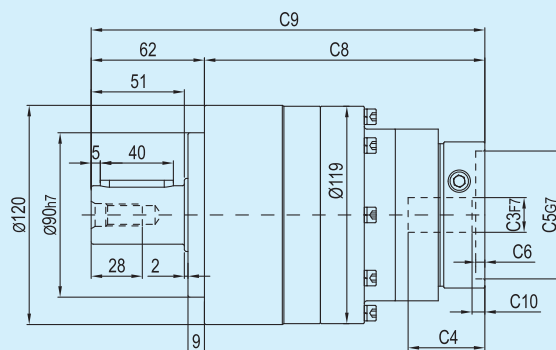
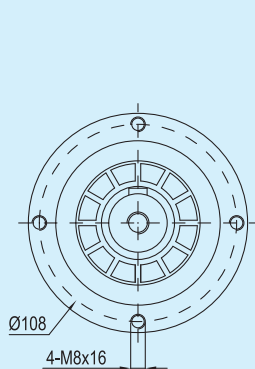


输入端 / INPUT

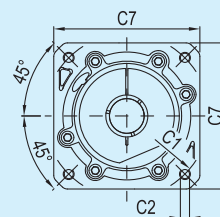


AE120-L2

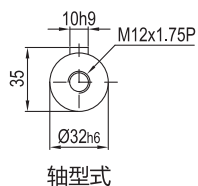
输出端 / OUTPUT



输入端 / INPUT



输出轴径/Output Diameter



轴型式

尺寸	C1	C2	C3	C4	C5	C6	C7	C8	C9	C10
AE120-L1	Ø145	4-M8x20	Ø19, Ø22, Ø24	64	Ø110	10	130	137	199	19.5
AE120-L1	Ø200	4-M12x28	Ø35	81	Ø114.3	10	180	154.5	216.5	28
AE120-L2	Ø90	4-M5x12, 4-M6x14	Ø19	42	Ø70	6.5	80	153.5	215.5	7
	Ø100	4-M6x14	Ø16	42	Ø80	6.5	86	153.5	215.5	6
AE120-L2	Ø115	4-M8x20	Ø19, Ø22, Ø24	56.5	Ø95	8	100	169	231	16.5
	Ø145	4-M8x20	Ø19, Ø22, Ø24	59	Ø110	11	130	171.5	233.5	19

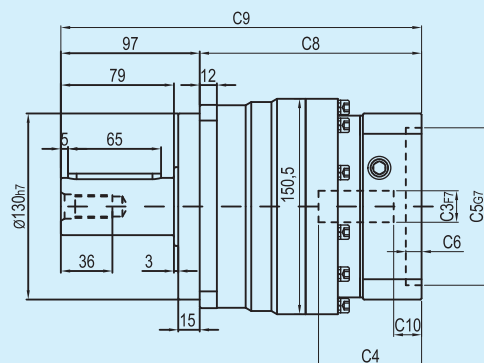
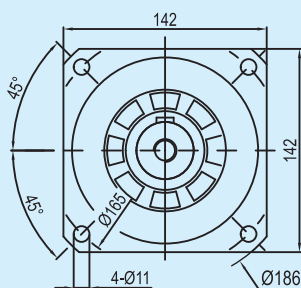
* C1~C7是公制标准马达连接板之尺寸,可根据客户要求单独定做。

* C1~C7are motor(metric standard) specific dimensions, which could be customised.

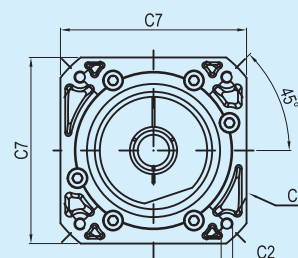
外形尺寸图表 / OUTLINE DIMENSION SHEET

AB142-L1

输出端/OUTPUT

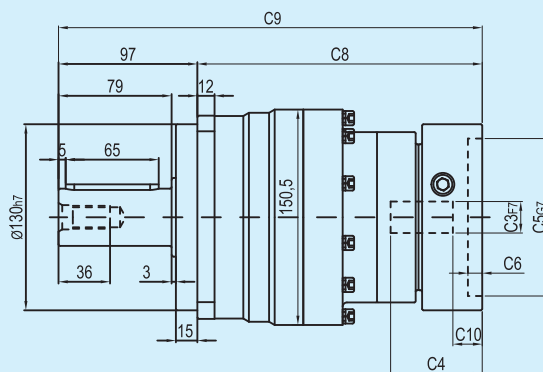
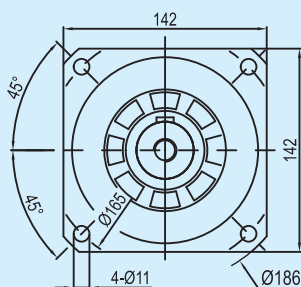


输入端/ INPUT

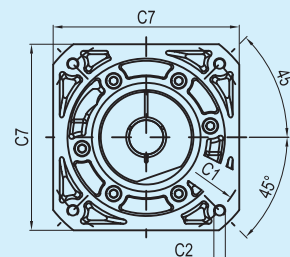


AB142-L2

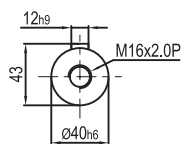
输出端/OUTPUT



输入端/ INPUT



输出轴径/Output Diameter



轴型式

尺寸	C1	C2	C3	C4	C5	C6	C7	C8	C9	C10
AB142-L1	Ø145	4-M8x20	Ø22, Ø24	72	Ø110	11	130	155	252	19.5
	Ø200	4-M12x28	Ø35	81.5	Ø114.3	8	180	165	262	25
AB142-L2	Ø145	4-M8x20	Ø19, Ø22, Ø24	64	Ø110	10	130	199	296	19.5
	Ø200	4-M12x28	Ø35	81	Ø114.3	10	180	216.5	313.5	28

* C1~C7是公制标准马达连接板之尺寸,可根据客户要求单独定做。

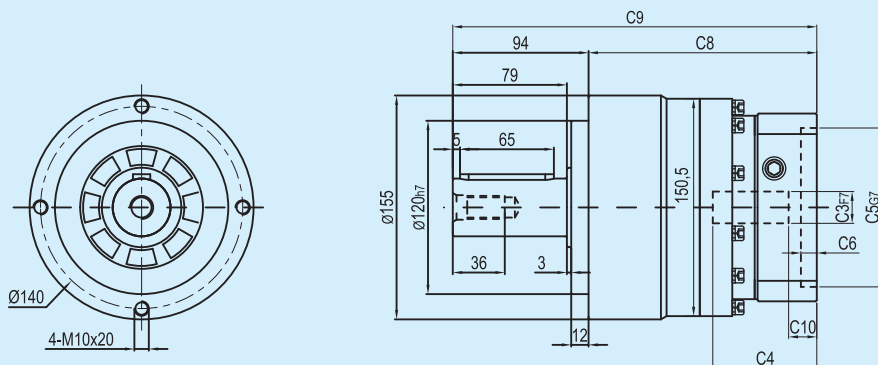
* C1~C7are motor(metric standard) specific dimensions, which could be customised.



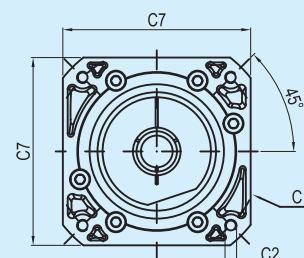
外形尺寸图表 / OUTLINE DIMENSION SHEET

AE155-L1

输出端 / OUTPUT

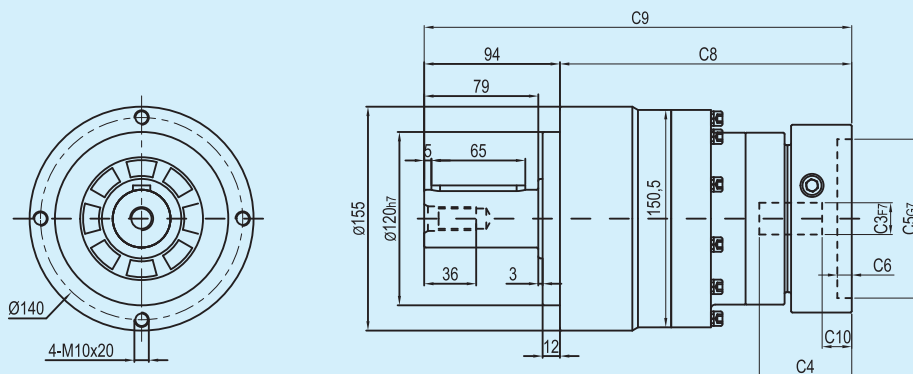


输入端 / INPUT

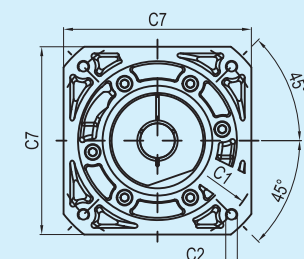


AE155-L2

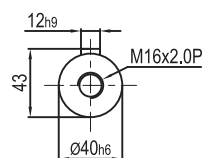
输出端 / OUTPUT



输入端 / INPUT



输出轴径/Output Diameter



轴型式

尺寸	C1	C2	C3	C4	C5	C6	C7	C8	C9	C10
AE155-L1	Ø145	4-M8x20	Ø22, Ø24	72	Ø110	11	130	158	252	19.5
	Ø200	4-M12x28	Ø35	81.5	Ø114.3	8	180	168	262	25
AE155-L2	Ø145	4-M8x20	Ø19, Ø22, Ø24	64	Ø110	10	130	202	296	19.5
	Ø200	4-M12x28	Ø35	81	Ø114.3	10	180	219.5	313.5	28

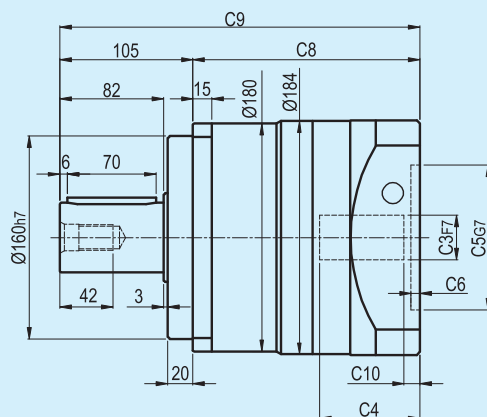
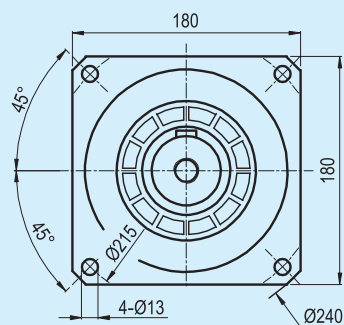
* C1~C7是公制标准马达连接板之尺寸,可根据客户要求单独定做。

* C1~C7are motor(metric standard) specific dimensions, which could be customised.

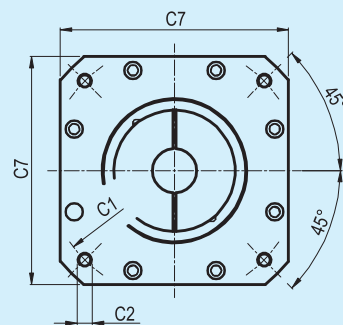
外形尺寸图表 / OUTLINE DIMENSION SHEET

AB180-L1

输出端 / OUTPUT

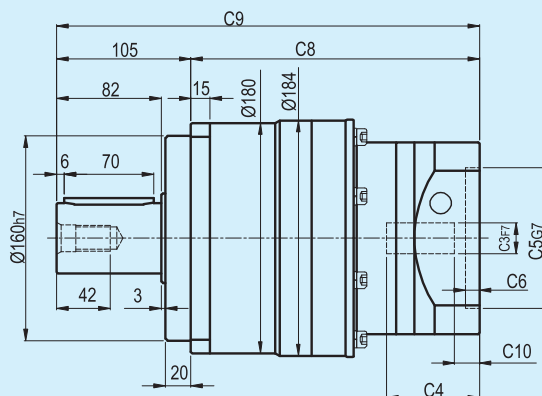
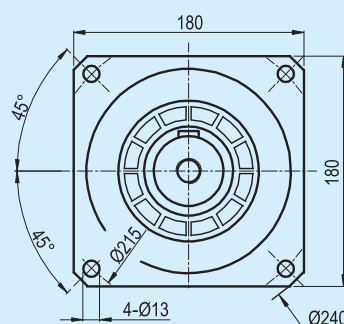


输入端 / INPUT

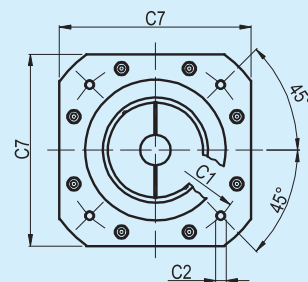


AB180-L2

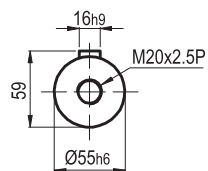
输出端 / OUTPUT



输入端 / INPUT



输出轴径/Output Diameter



轴型式

尺寸	C1	C2	C3	C4	C5	C6	C7	C8	C9	C10
AB180-L1	Ø200	4-M12x28	Ø35	85	Ø114.3	7	180	179	284	7.5
	Ø200	4-M12x30	Ø42	116	Ø114.3	7	180	210	315	40
	Ø215	4-M12x30	Ø42	90	Ø180	8	200	184	289	14
	Ø235	4-M12x30	Ø42	120	Ø200	10	220	214	319	44
AB180-L2	Ø145	4-M8x25	Ø22, Ø24	72.5	Ø110	11	150	225.5	330.5	19.5
	Ø200	4-M12x30	Ø35	82	Ø114.3	8	180	235	340	30

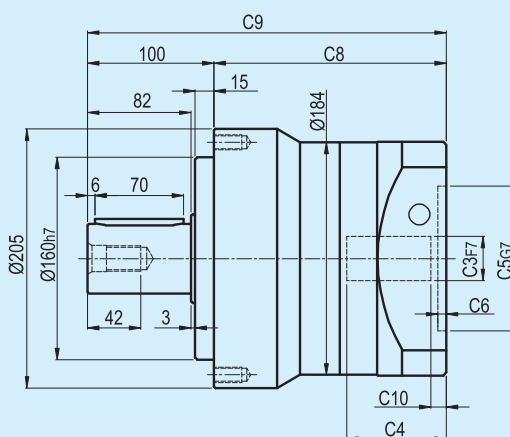
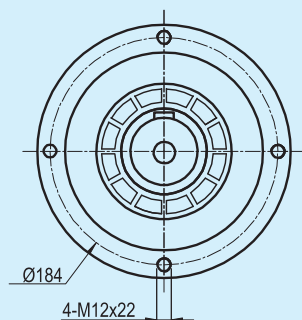
* 输入马达连接板之尺寸, 可根据客户要求单独定做。

* The input motor specific dimensions could be customised.

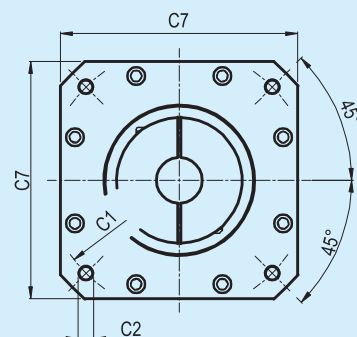
外形尺寸图表 / OUTLINE DIMENSION SHEET

AE205-L1

输出端 / OUTPUT

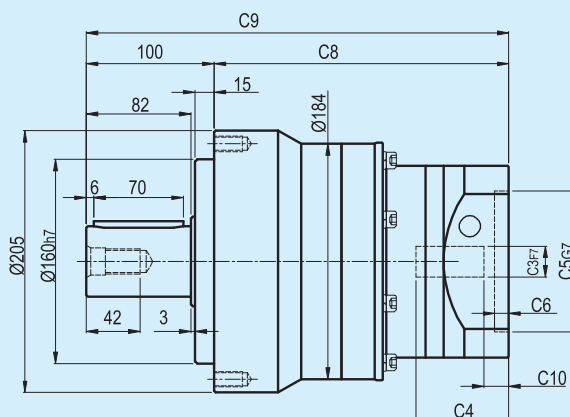
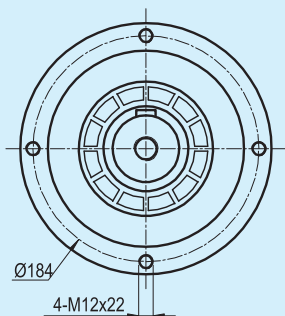


输入端 / INPUT

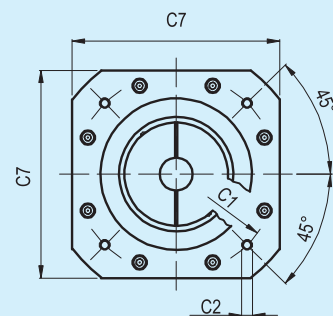


AE205-L2

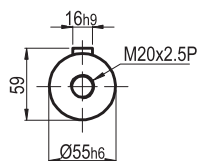
输出端 / OUTPUT



输入端 / INPUT



输出轴径/Output Diameter



轴型式

尺寸	C1	C2	C3	C4	C5	C6	C7	C8	C9	C10
AE205-L1	Ø200	4-M12x28	Ø35	85	Ø114.3	7	180	184	284	7.5
	Ø200	4-M12x30	Ø42	116	Ø114.3	7	180	215	315	40
	Ø215	4-M12x30	Ø42	90	Ø180	8	200	189	289	14
	Ø235	4-M12x30	Ø42	120	Ø200	10	220	219	319	44
AE205-L2	Ø145	4-M8x25	Ø22, Ø24	72.5	Ø110	11	150	230.5	330.5	19.5
	Ø200	4-M12x30	Ø35	82	Ø114.3	8	180	240	340	30

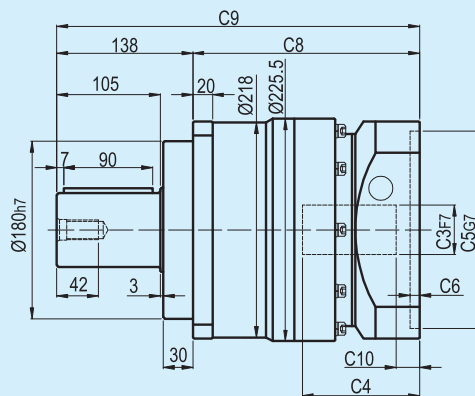
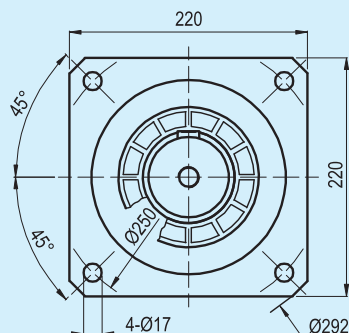
* 输入马达连接板之尺寸,可根据客户要求单独定做。

* The input motor specific dimensions could be customised.

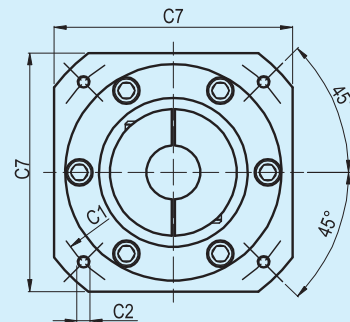
外形尺寸图表 / OUTLINE DIMENSION SHEET

AB220-L1

输出端 / OUTPUT

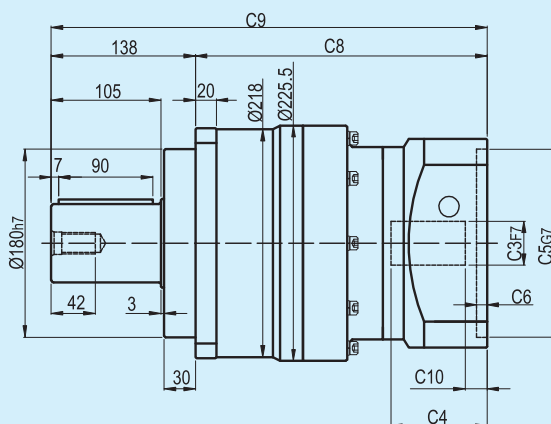
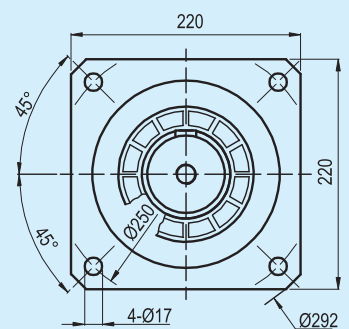


输入端 / INPUT

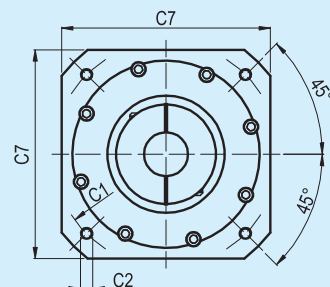


AB220-L2

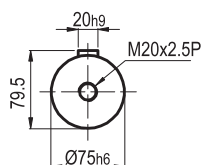
输出端 / OUTPUT



输入端 / INPUT



输出轴径/Output Diameter



轴型式

尺寸	C1	C2	C3	C4	C5	C6	C7	C8	C9	C10
AB220-L1	Ø200	4-M12x28	Ø35, Ø42	116	Ø114.3	15	200	227	365	19.5
	Ø215	4-M12x30	Ø42	109	Ø180	8	200	220	358	12.5
	Ø235	4-M12x30	Ø42, Ø55	119	Ø200	10	220	230	368	22.5
AB220-L2	Ø200	4-M12x30	Ø35	85	Ø114.3	7	180	264	402	7.5
	Ø200	4-M12x30	Ø42	116	Ø114.3	7	180	295	433	40
	Ø215	4-M12x30	Ø42	90	Ø180	8	200	269	407	14
	Ø235	4-M12x30	Ø42	120	Ø200	10	220	299	437	44

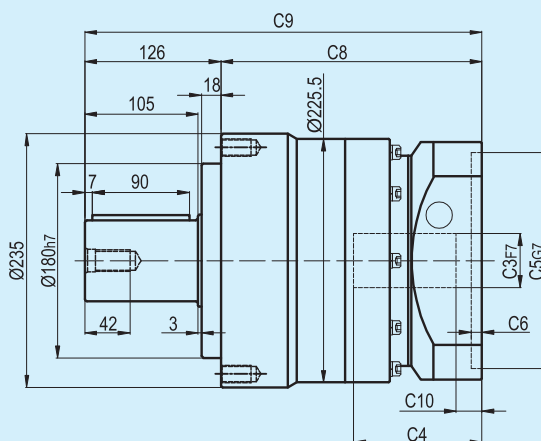
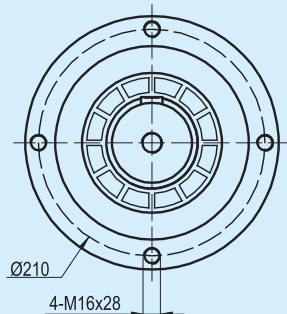
* C1~C7是公制标准马达连接板之尺寸,可根据客户要求单独定做。

* C1~C7are motor(metric standard) specific dimensions, which could be customised.

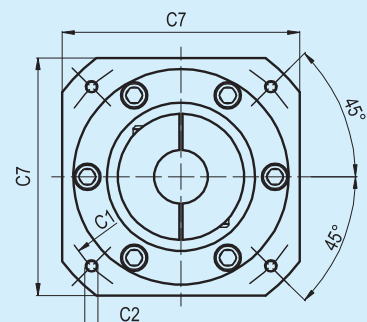
外形尺寸图表 / OUTLINE DIMENSION SHEET

AE235-L1

输出端 / OUTPUT

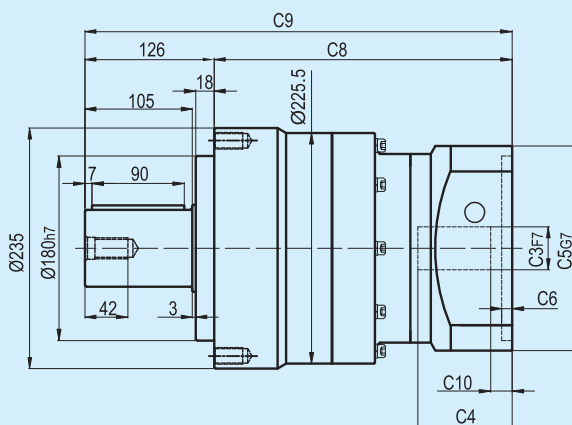
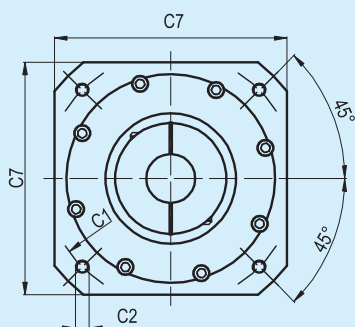


输入端 / INPUT

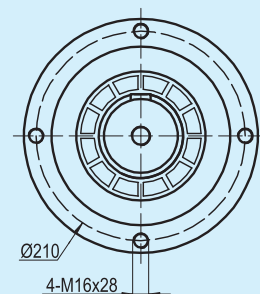


AE235-L2

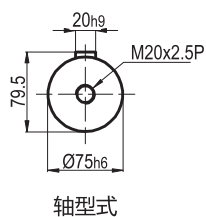
输入端 / INPUT



输出端 / OUTPUT



输出轴径/Output Diameter



轴型式

尺寸	C1	C2	C3	C4	C5	C6	C7	C8	C9	C10
AE235-L1	Ø200	4-M12x30	Ø35, Ø42	116	Ø114.3	15	200	239	365	19.5
	Ø215	4-M12x30	Ø42	109	Ø180	8	200	232	358	12.5
	Ø235	4-M12x30	Ø42, Ø55	119	Ø200	10	220	242	368	22.5
AE235-L2	Ø200	4-M12x30	Ø35	85	Ø114.3	7	180	276	402	7.5
	Ø200	4-M12x30	Ø42	116	Ø114.3	7	180	307	433	40
	Ø215	4-M12x30	Ø42	90	Ø180	8	200	281	407	14
	Ø235	4-M12x30	Ø42	120	Ø200	10	220	311	437	44

* C1~C7是公制标准马达连接板之尺寸,可根据客户要求单独定做。

* C1~C7are motor(metric standard) specific dimensions, which could be customised.