

XAR、XARS、XARK、XARKS Series

精密直角减速機 Precision right angle reducer

體積小、省空間

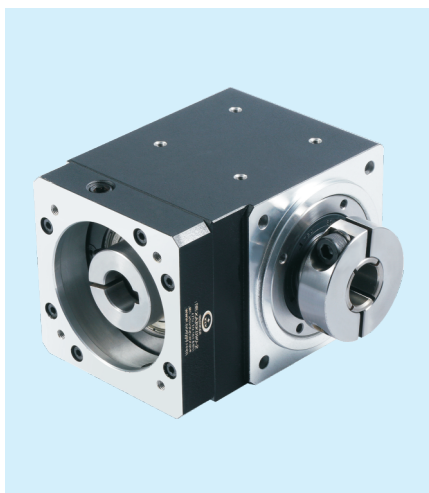
使用螺旋式傘齒輪，馬達的安裝可實現90度轉向，節省安裝空間。

Using spiral bevel gears, the installation of the motor can achieve 90-degree steering, saving installation space.

高精度、低噪音、高剛性

精密型背隙小于1弧分，定位精確；傳動齒輪經精密研製，達到精密傳動，低噪音、高剛性質量要求。

The precision backlash is less than 1 arc minute, and the positioning is accurate; the transmission gear is precisely developed to meet the quality requirements of precision transmission, low noise, and high rigidity.





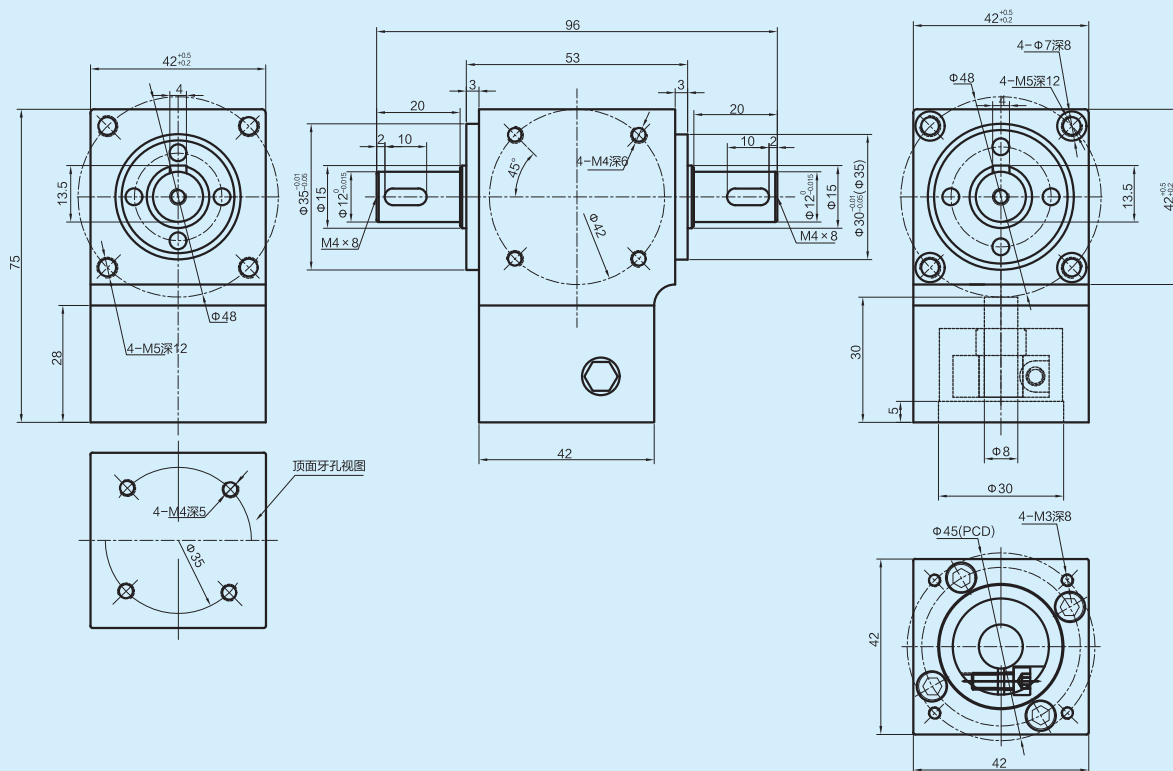
技術參數

型號 Model	單位 Unit	XAR42 XARS42 XARK42 XARKS42	XAR60 XARS60 XARK60 XARKS60	XAR90 XARS90 XARK90 XARKS90	XAR120 XARS120 XARK120 XARKS120	減速比 Ratios	級數 Stages
額定輸出扭矩TN Rated output torque	Nm	23	35	60	120	2	1級
		20	30	55	-	3	
		18	25	50	100	5	
		23	35	60	120	10	
		20	30	55	-	12	2級
		20	30	55	100	15	
		23	35	60	120	20	
		18	25	50	100	25	
		20	30	55	-	30	
		20	30	55	100	35	
		18	25	50	100	50	
最大輸出扭矩T2N Max. output torque T2N	Nm	2.5倍額定輸出扭矩/2.5 times rated output torque					
額定輸入轉速 Rated input speed	rpm	1500					
最大輸入轉速 Max. output speed	rpm	3000					
最大容許徑向力② Max.radial force	N	350	560	1050	1800		
最大容許軸向力② Max.axial force	N	160	230	550	1100		
轉動慣量 Moment of inertia	Kgcm²	0.03	0.08	0.09			
回程間隙 Backlash	arcmin	P0 < 1 P1 < 3					1級
		P0 < 2 P1 < 5					2級
噪音 Noise	dB	≤ 58	≤ 58	≤ 60	≤ 62		
滿載效率 Efficiency	%	1級: 97% 2級: 95%					
壽命 Life	h	> 20000					
工作溫度 Operating temperature		-25℃ ~ +90℃					
潤滑方式 Lubricating		合成油脂潤滑/Synthetic grease lubrication					
旋轉方向 Direction of rotation		輸入、輸出同向/Same direction					
防護等級 Protection grade		IP65					
安裝方式 Installation		任意/Any					
重量 Weight	kg	0.49	1.25	3.93	8.5		
		0.89	2.27	6.68	12.2		2級

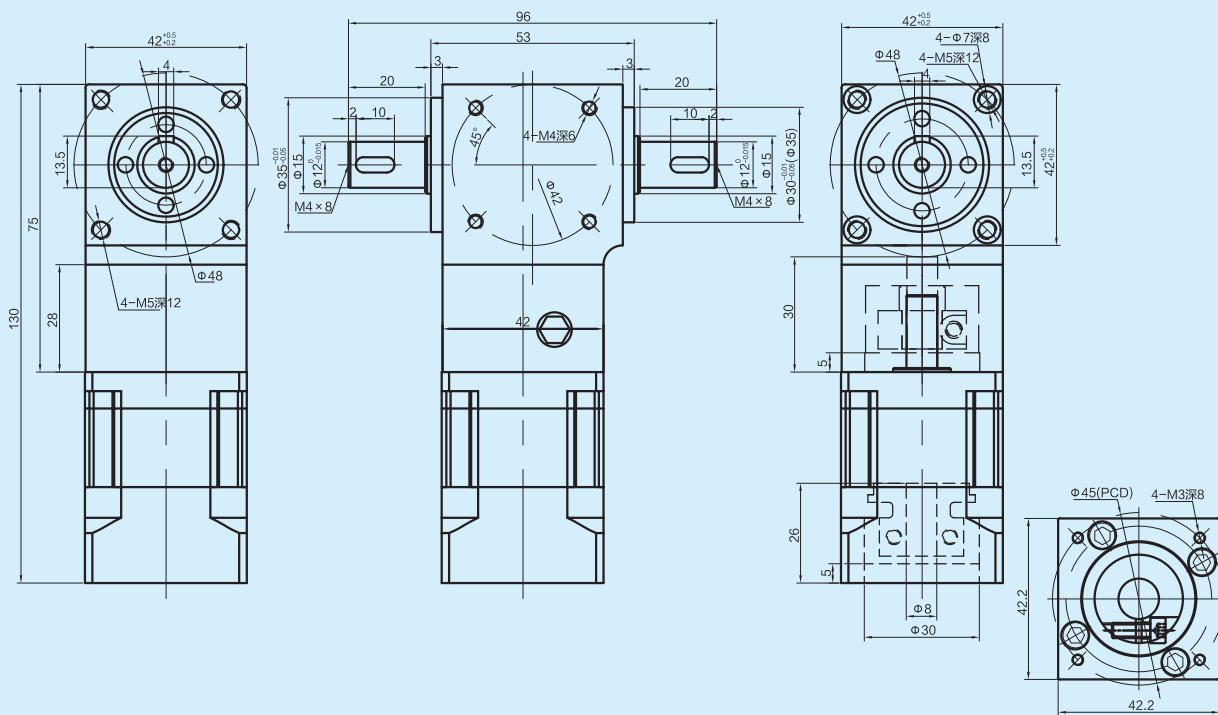
* 以上技術參數僅供參考，實際根據客戶提供的數據，會出具相關的技術參數及尺寸。



XARS42-L1

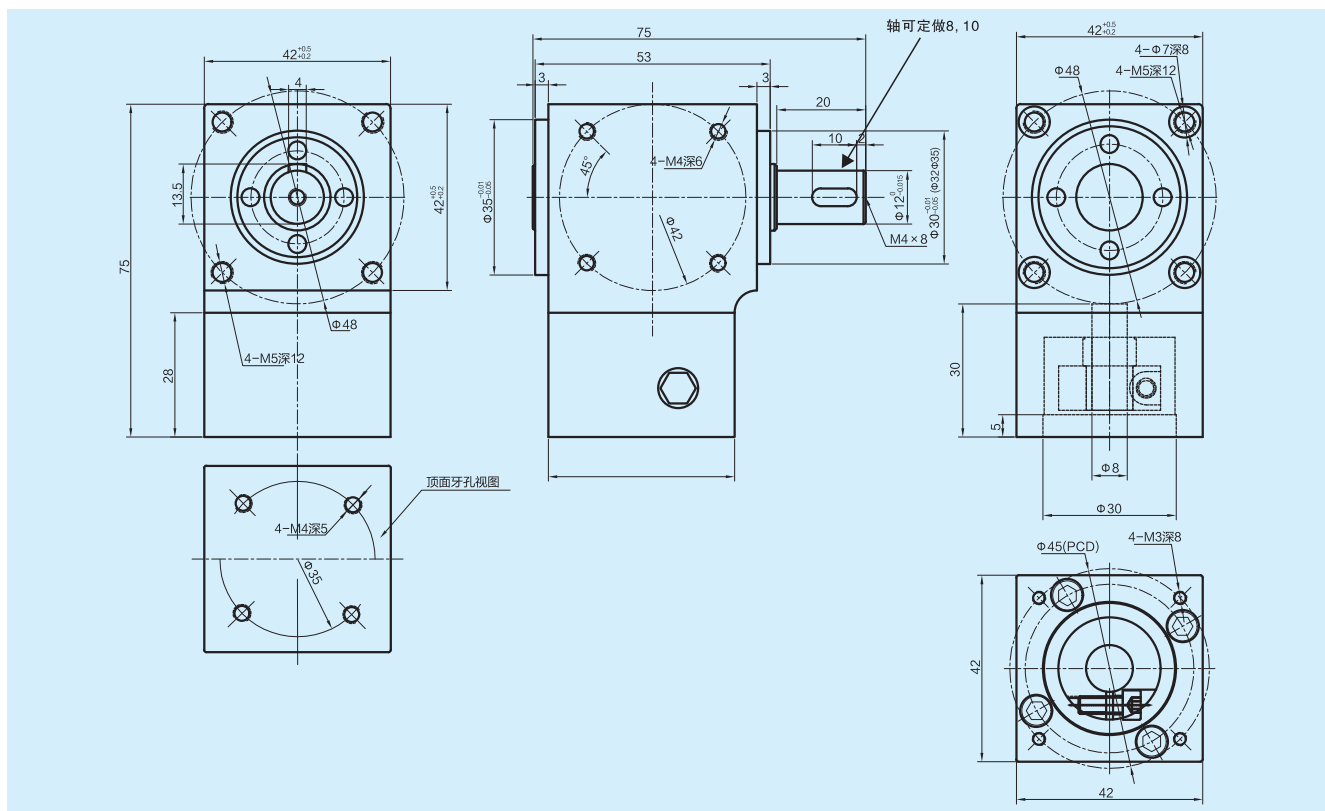


XARS42-L2

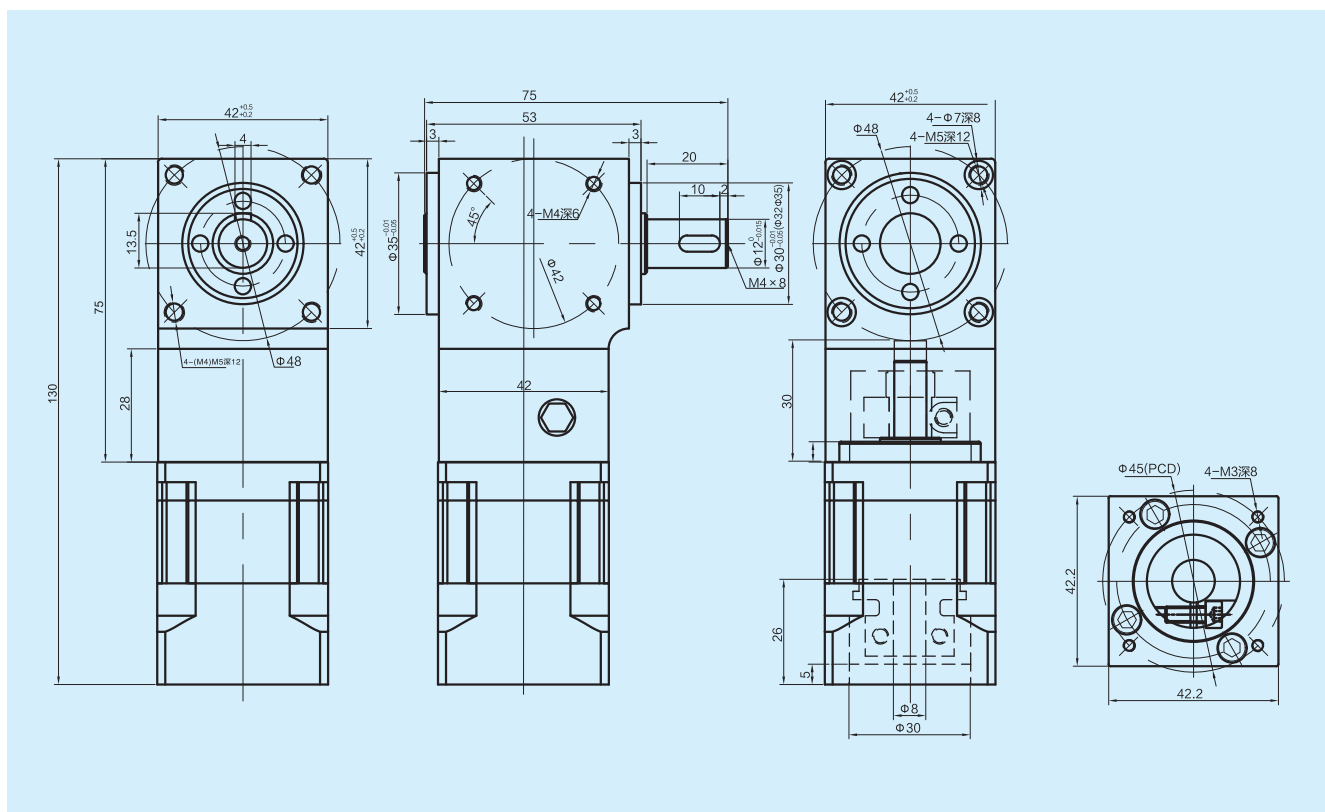




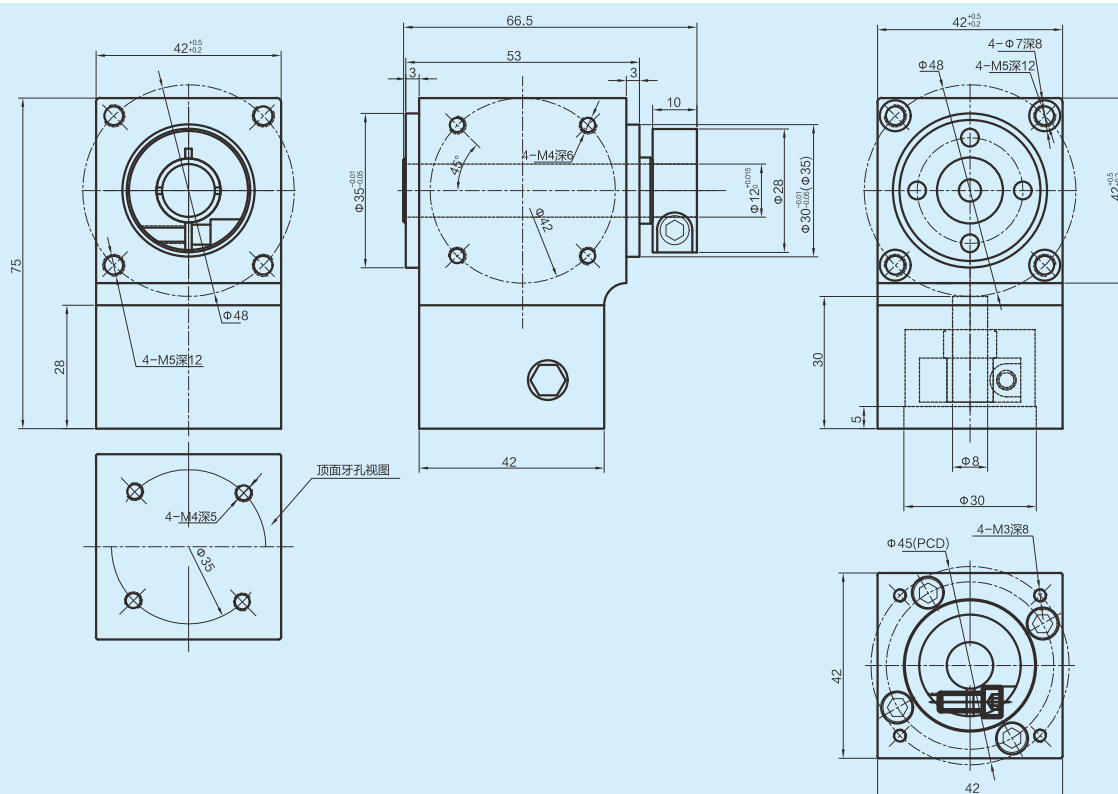
XAR42-L1



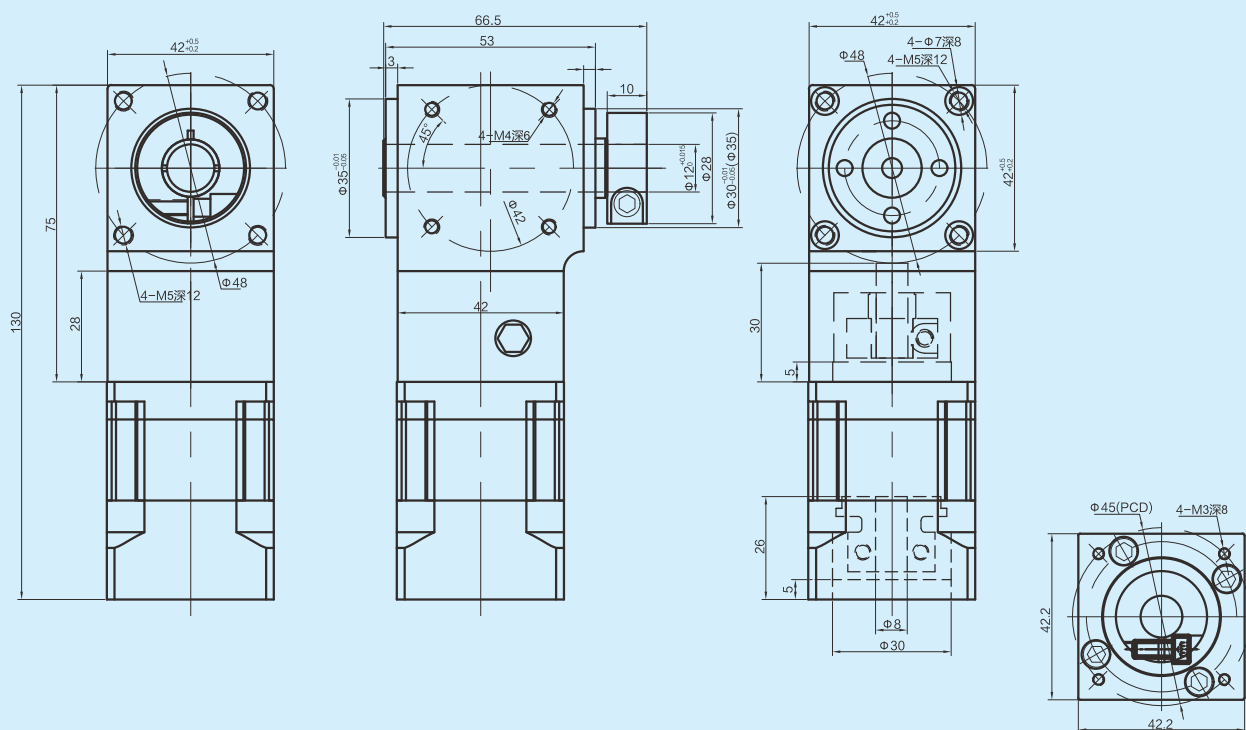
XAR42-L2



XARK42-L1



XARK42-L2



Technical drawing of a mechanical part, showing five views: front view, top view, left side view, right side view, and bottom view. The part is a square block with a central circular feature and four corner holes.

Front View: Shows the top surface with a central circular feature (42^{+0.5}_{-0.2}) and four corner holes (4-M5深12). The overall dimensions are 75x75. The central feature has a diameter of 42 and a depth of 12. The corner holes have a diameter of 48 and a depth of 12.

Top View: Shows the bottom surface with a central circular feature (42^{+0.5}_{-0.2}) and four corner holes (4-M4深6). The overall dimensions are 77x53. The central feature has a diameter of 42 and a depth of 6. The corner holes have a diameter of 48 and a depth of 6.

Left Side View: Shows the left side of the part with a central circular feature (42^{+0.5}_{-0.2}) and four corner holes (4-M5深12). The overall dimensions are 75x28. The central feature has a diameter of 42 and a depth of 12. The corner holes have a diameter of 48 and a depth of 12.

Right Side View: Shows the right side of the part with a central circular feature (42^{+0.5}_{-0.2}) and four corner holes (4-M5深12). The overall dimensions are 75x28. The central feature has a diameter of 42 and a depth of 12. The corner holes have a diameter of 48 and a depth of 12.

Bottom View: Shows the bottom surface with a central circular feature (42^{+0.5}_{-0.2}) and four corner holes (4-M3深8). The overall dimensions are 42x42. The central feature has a diameter of 42 and a depth of 8. The corner holes have a diameter of 48 and a depth of 8.

Top View (Top Surface): Shows the top surface with a central circular feature (42^{+0.5}_{-0.2}) and four corner holes (4-M4深5). The overall dimensions are 42x42. The central feature has a diameter of 42 and a depth of 5. The corner holes have a diameter of 48 and a depth of 5.

Technical drawing of a mechanical part, showing three views: front, side, and top. The drawing includes dimensions and labels for various features.

Front View (Left):

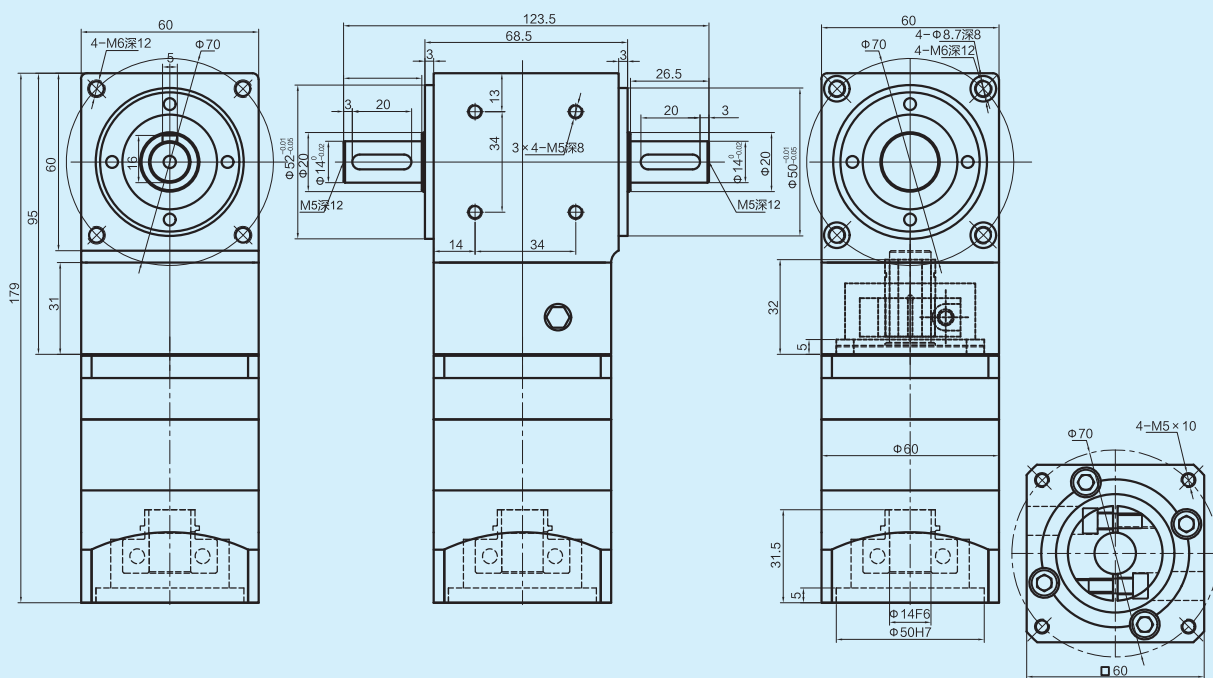
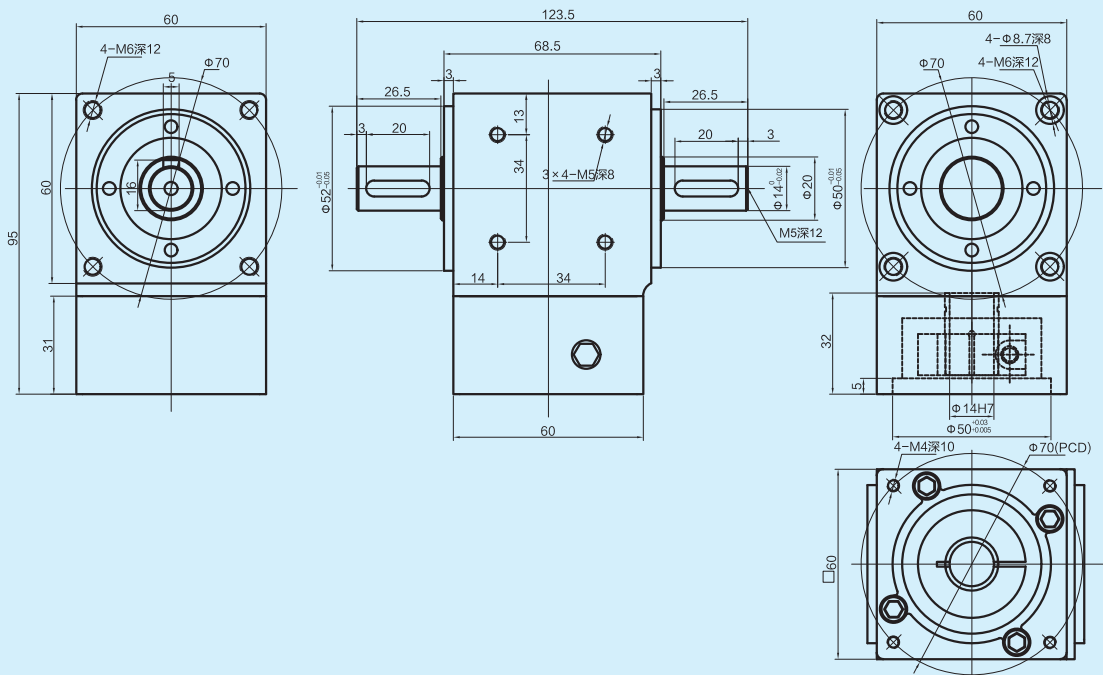
- Overall width: 75
- Overall height: 130
- Top flange diameter: $\varnothing 42_{-0.02}^{+0.05}$
- Top flange thickness: 3
- Top flange hole pattern: 4-M5深12
- Top flange hole diameter: $\varnothing 48$
- Top flange hole spacing: 28
- Top flange hole diameter: $\varnothing 28$
- Top flange hole diameter: $\varnothing 12_{-0.005}^{+0.01}$
- Top flange hole diameter: $\varnothing 30_{-0.01}^{+0.02}$ (ø 35)

Side View (Middle):

- Overall width: 77
- Overall height: 53
- Top flange thickness: 10
- Top flange hole pattern: 4-M4深6
- Top flange hole diameter: $\varnothing 45$
- Top flange hole diameter: $\varnothing 12_{-0.005}^{+0.01}$
- Top flange hole diameter: $\varnothing 28$
- Top flange hole diameter: $\varnothing 30_{-0.01}^{+0.02}$ (ø 35)

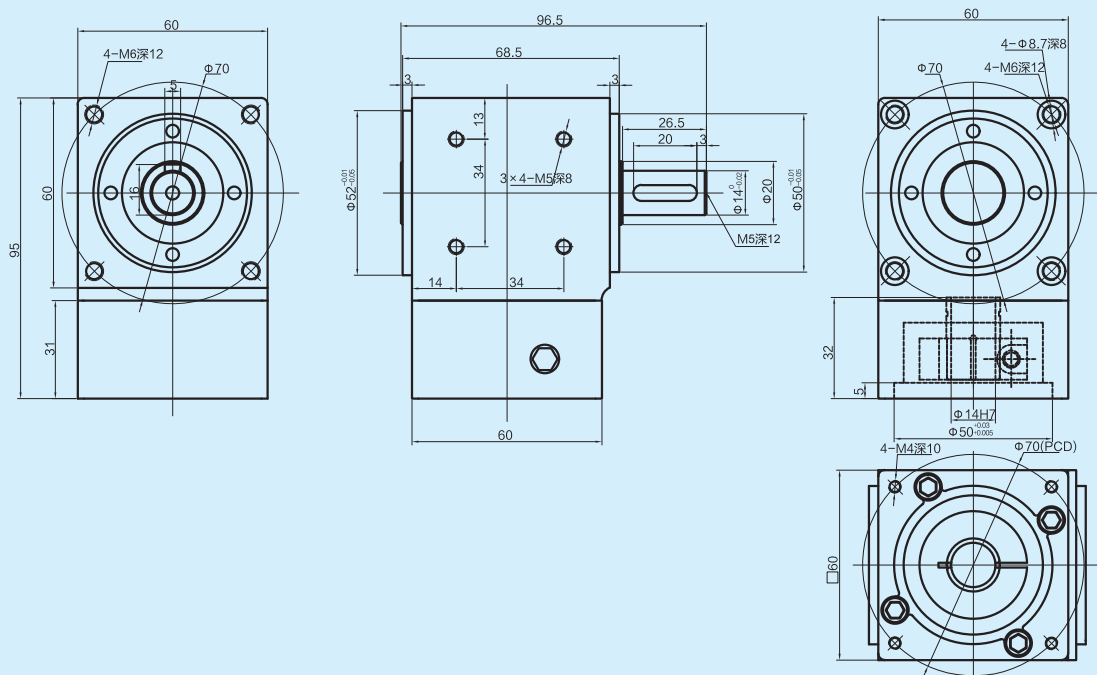
Top View (Right):

- Overall width: 42.2
- Overall height: 42.2
- Top flange diameter: $\varnothing 42_{-0.02}^{+0.05}$
- Top flange thickness: 3
- Top flange hole pattern: 4-M5深12
- Top flange hole diameter: $\varnothing 48$
- Top flange hole spacing: 28
- Top flange hole diameter: $\varnothing 28$
- Top flange hole diameter: $\varnothing 12_{-0.005}^{+0.01}$
- Top flange hole diameter: $\varnothing 30_{-0.01}^{+0.02}$ (ø 35)

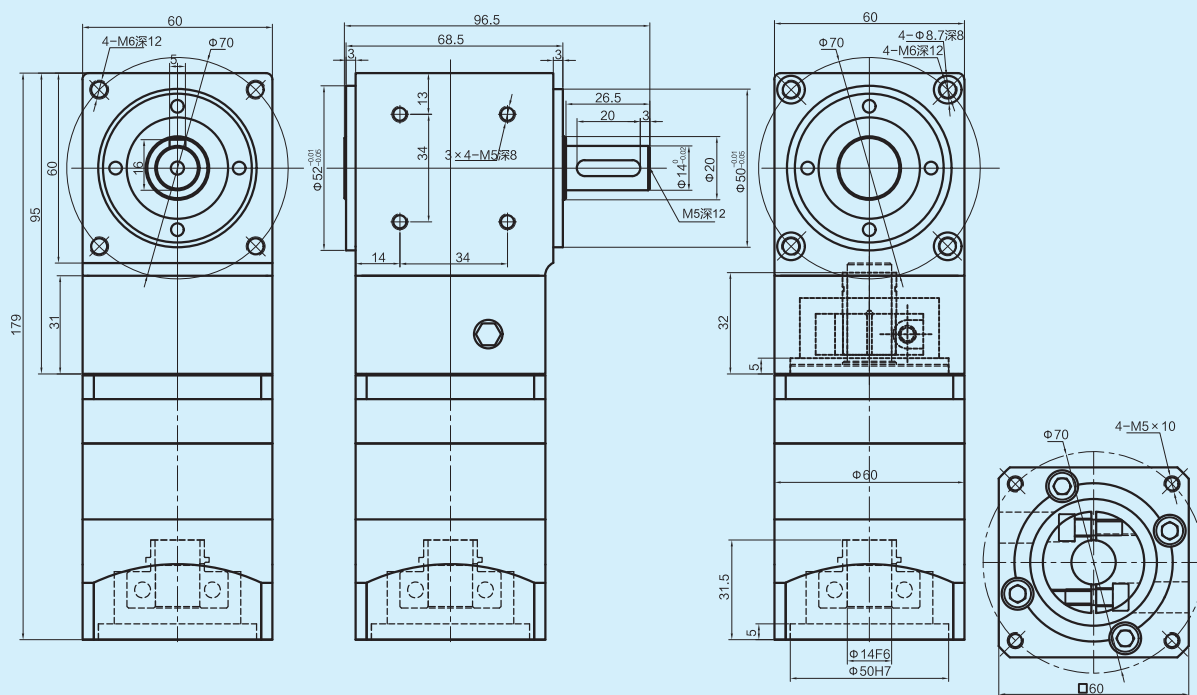


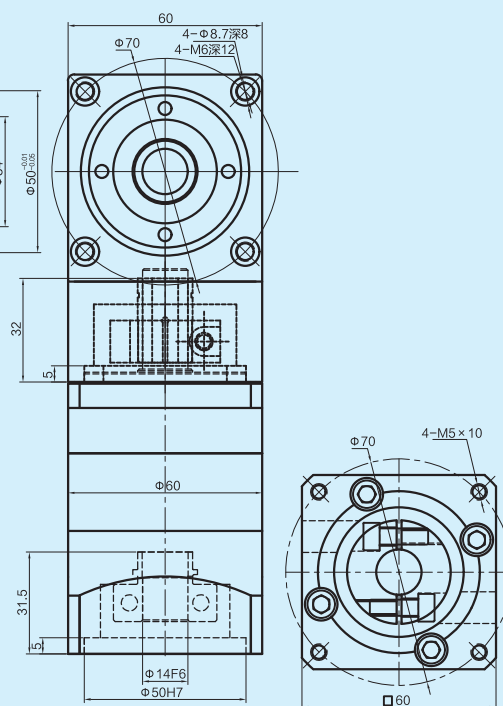
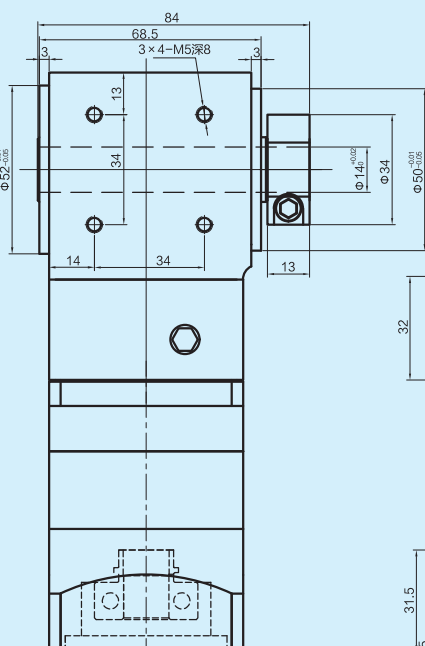
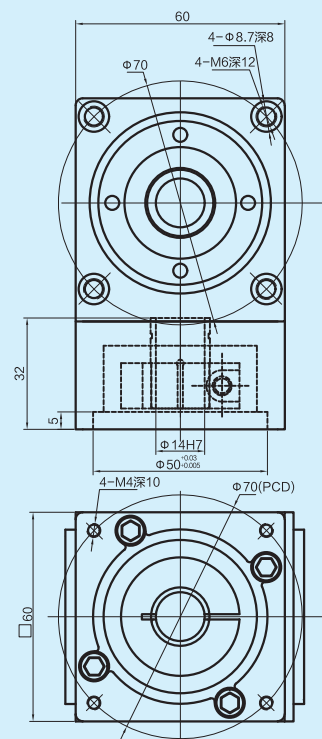
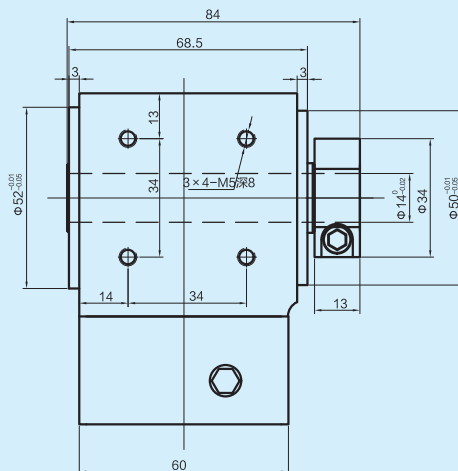


XAR60-L1

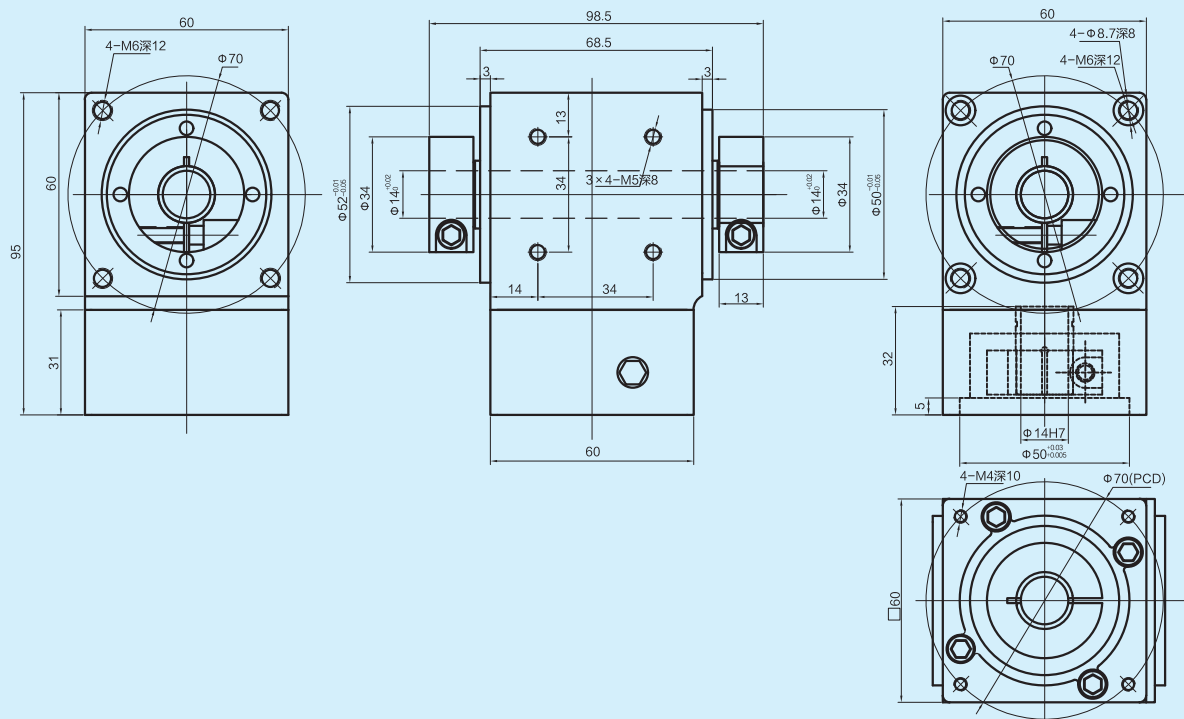


XAR60-L2

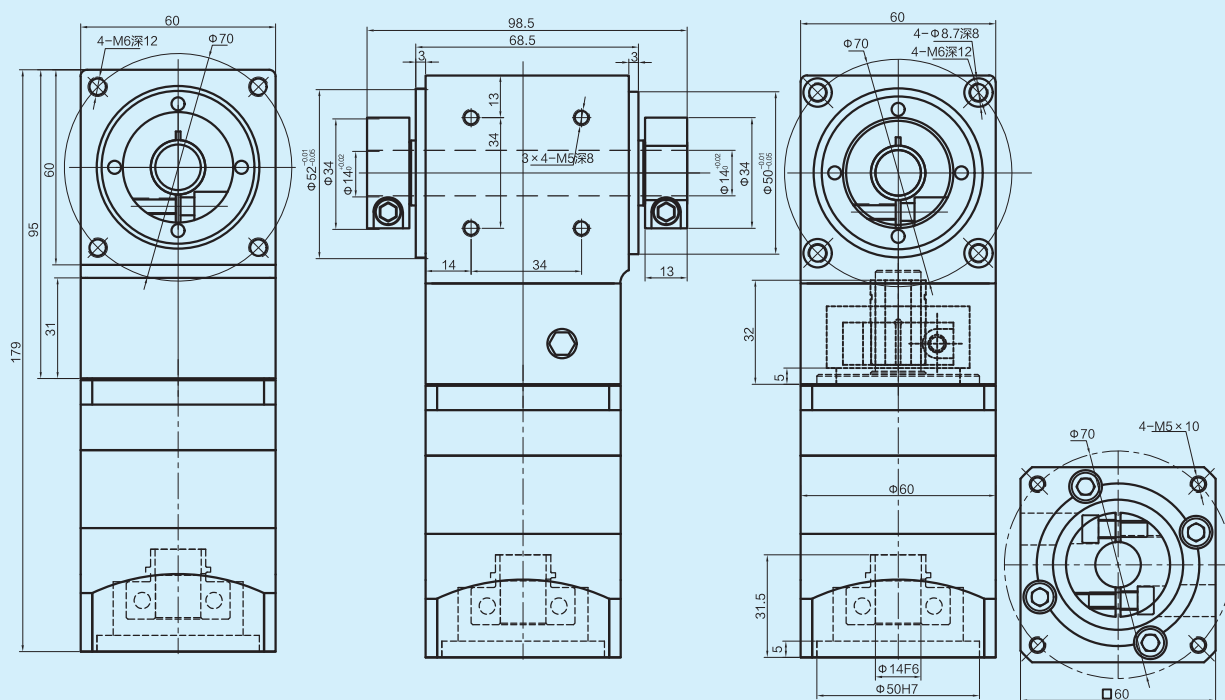




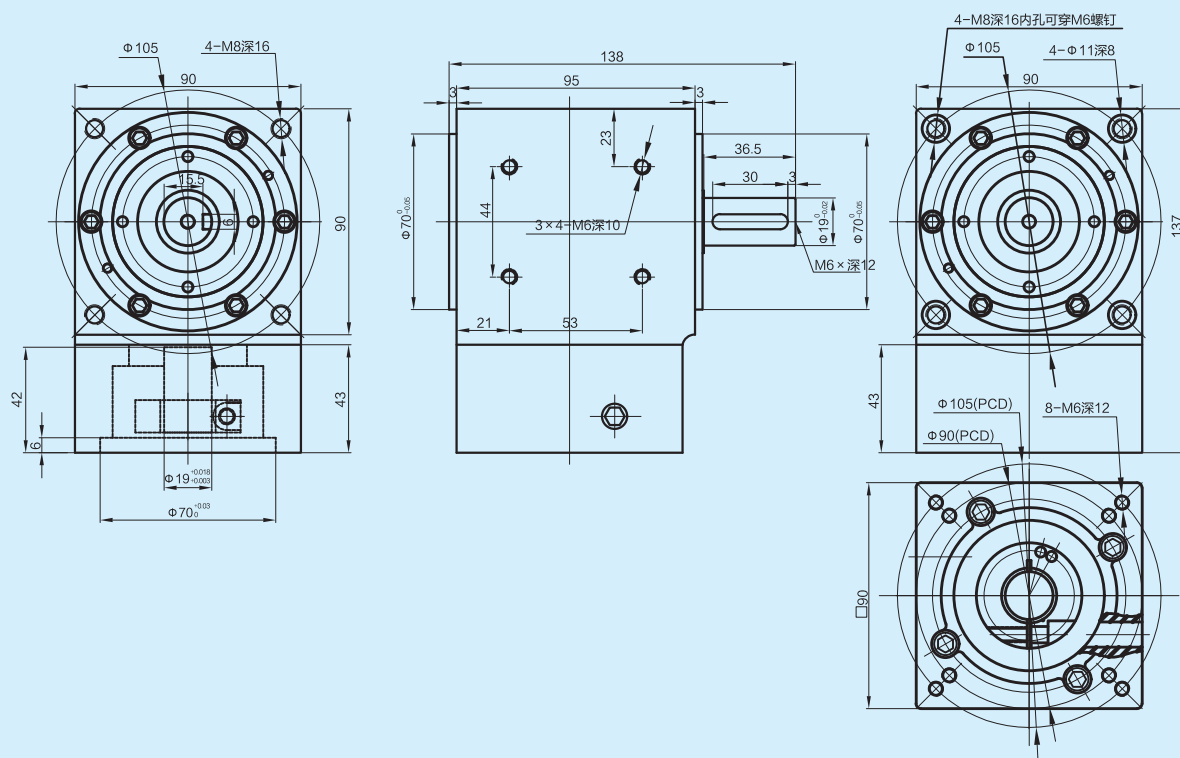
XARKS60-L1



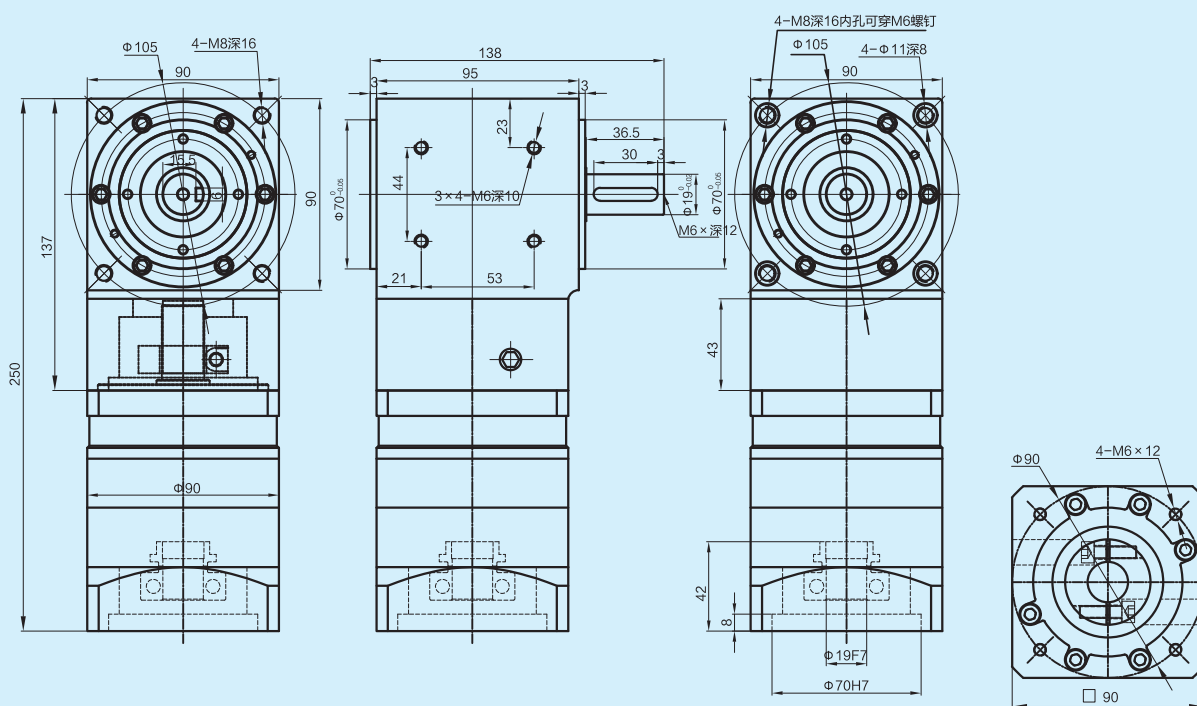
XARKS60-L2



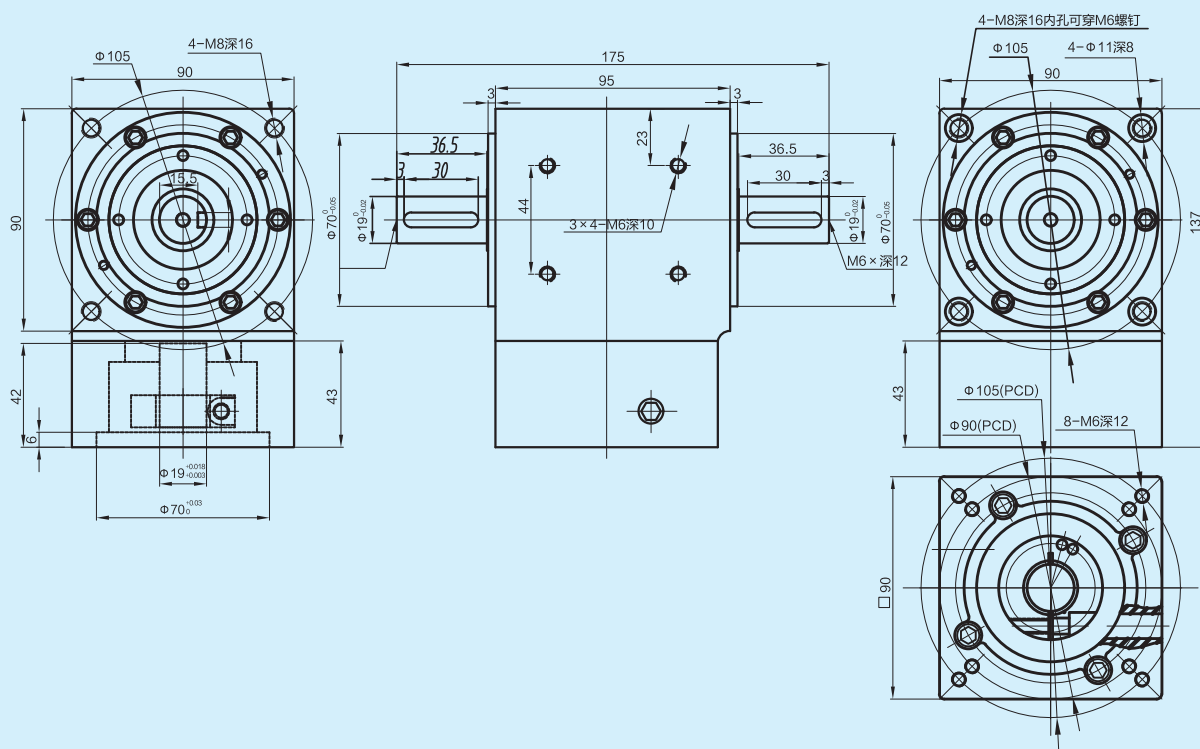
XAR90-L1



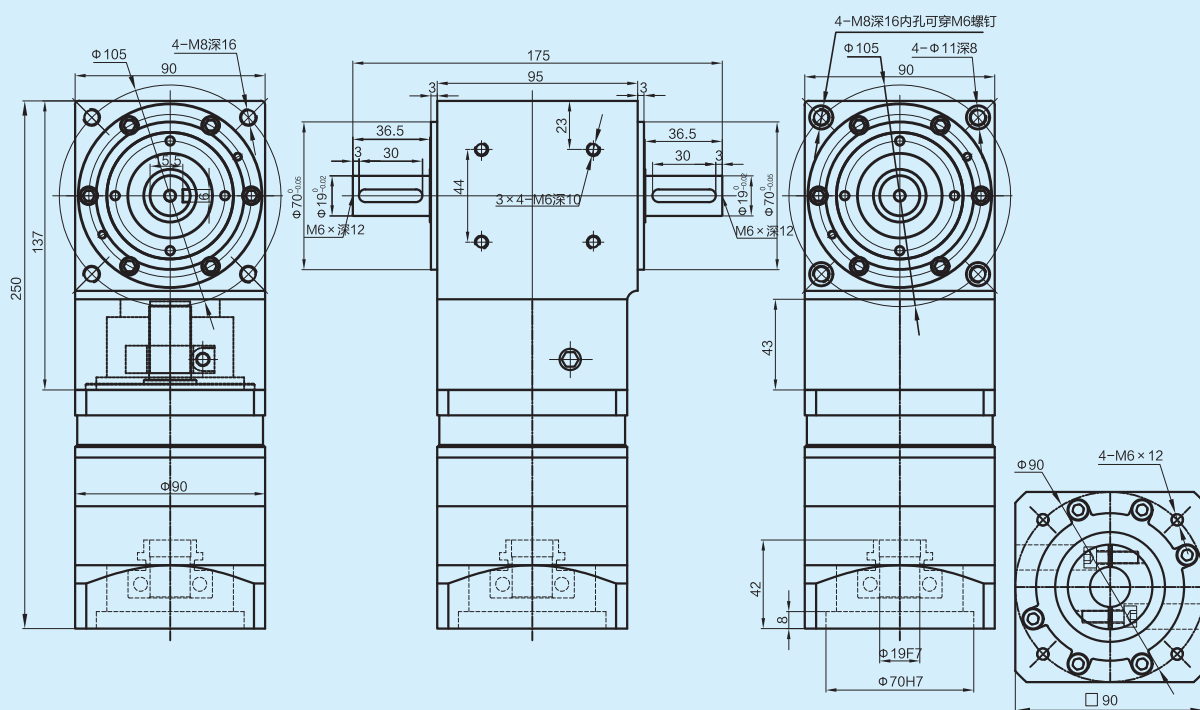
XAR90-L2



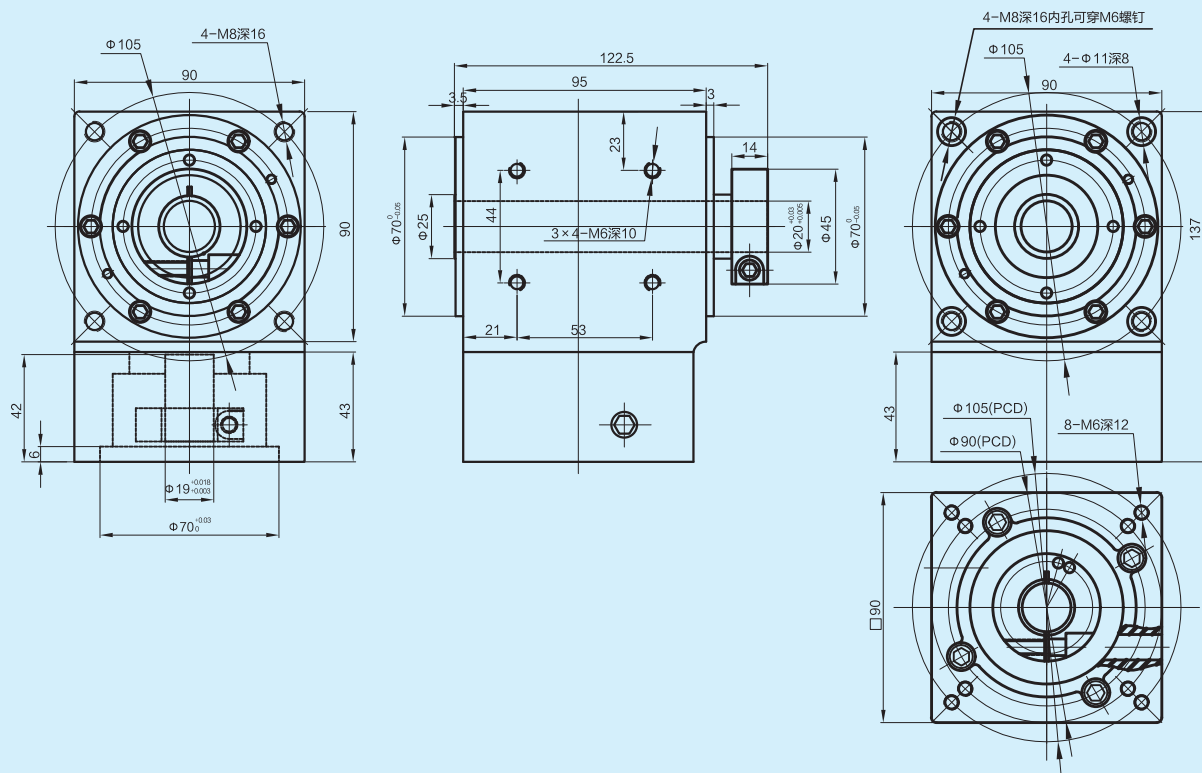
XARS90-L1



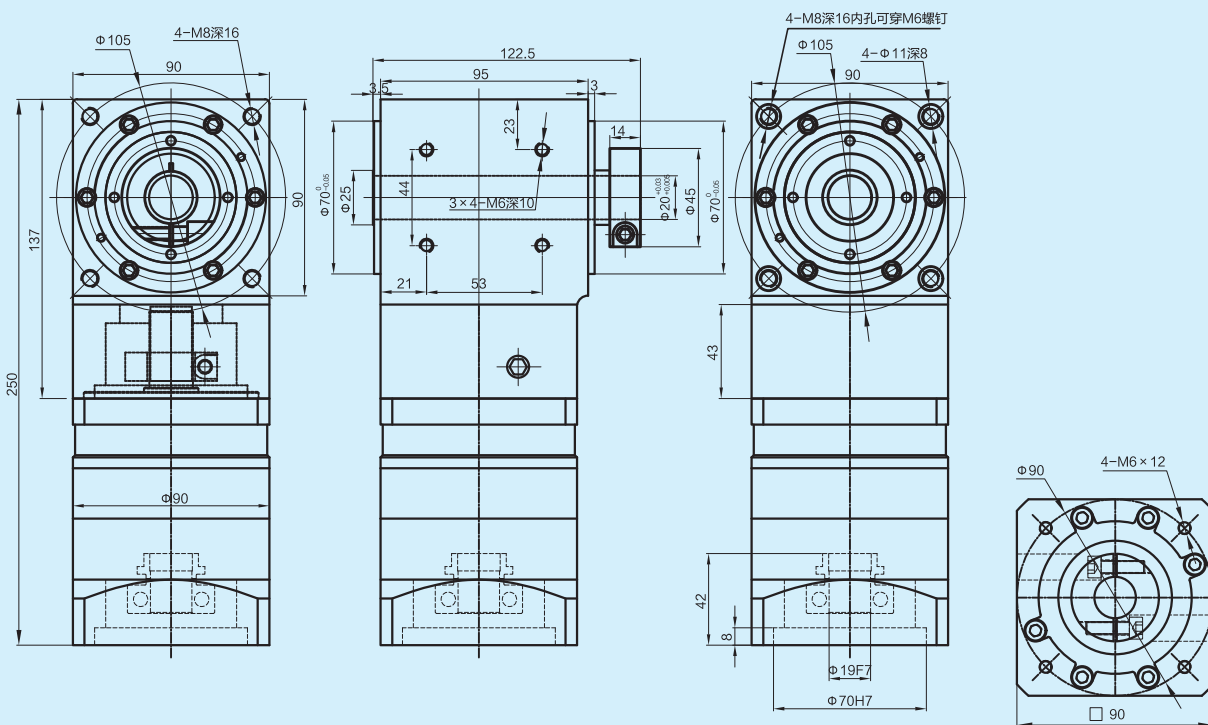
XARS90-L2



XARK90-L1

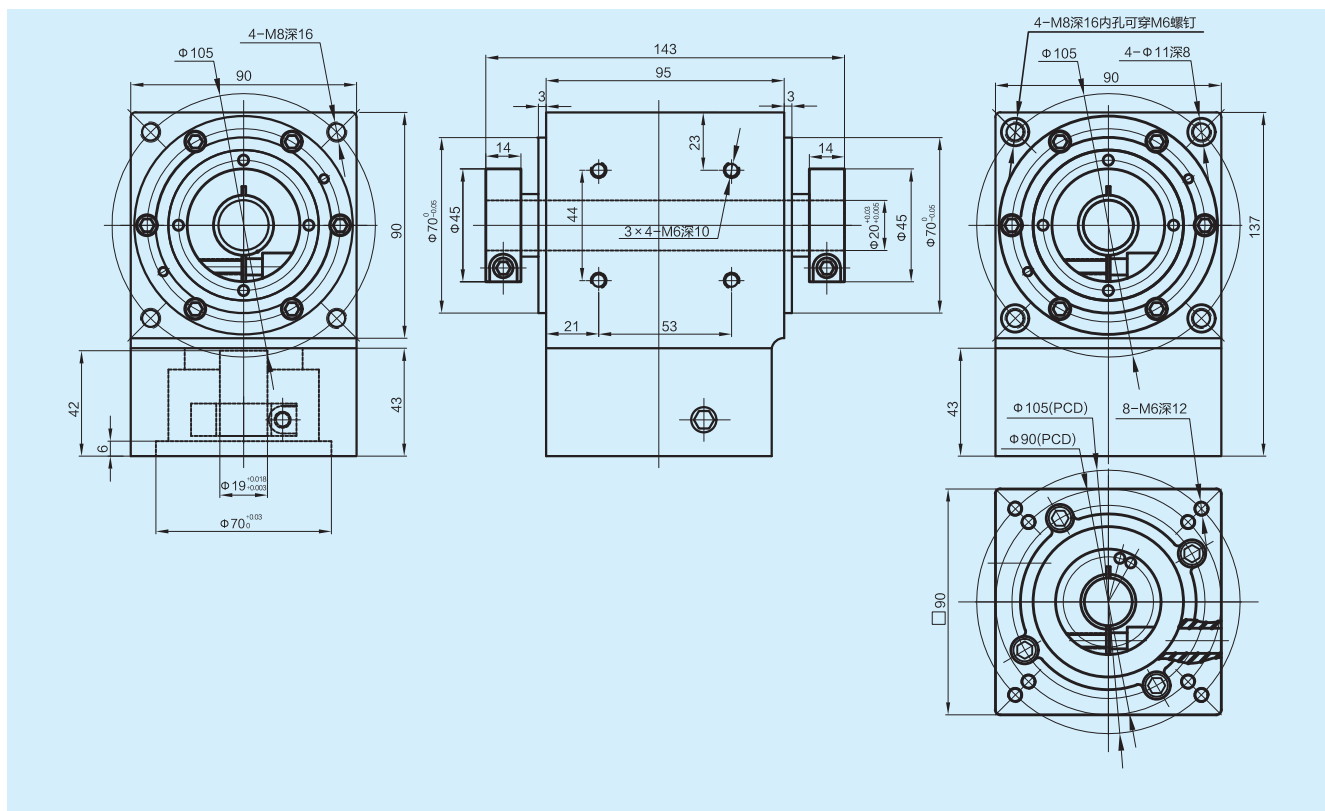


XARK90-L2





XARKS90-L1



XARKS90-L2

